

For Research Use Only

THUMPD3 Polyclonal antibody

Catalog Number:19807-1-AP



Basic Information

Catalog Number: 19807-1-AP	GenBank Accession Number: BC001622	Purification Method: Antigen affinity purification
Size: 150ul , Concentration: 350 ug/ml by Nanodrop and 200 ug/ml by Bradford method using BSA as the standard;	GeneID (NCBI): 25917	Recommended Dilutions: WB: 1:2000-1:12000
Source: Rabbit	UNIPROT ID: Q9BV44	IHC: 1:20-1:200
Isotype: IgG	Full Name: THUMP domain containing 3	IF/ICC: 1:10-1:100
Immunogen Catalog Number: AG13833	Calculated MW: 507 aa, 57 kDa	
	Observed MW: 57 kDa	

Applications

Tested Applications: WB, IHC, IF/ICC, ELISA	Positive Controls:
Species Specificity: human, mouse	WB : HeLa cells, HepG2 cells, mouse kidney tissue, L02 cells
Note-IHC: suggested antigen retrieval with TE buffer pH 9.0; (*) Alternatively, antigen retrieval may be performed with citrate buffer pH 6.0	IHC : human hepatocirrhosis tissue, human testis tissue
	IF/ICC : HeLa cells, HepG2 cells

Background Information

THUMPD3, or THUMP domain containing 3, is a protein-coding gene that plays a significant role in tRNA methylation, a post-transcriptional modification that affects tRNA biology and is closely associated with human diseases. THUMPD3 is responsible for catalyzing the formation of N2-methylguanosine (m2G) at position 6 in a broad range of tRNA substrates containing the characteristic 3'-CCA terminus of mature tRNAs.

Storage

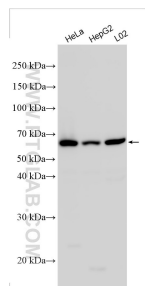
Storage:
Store at -20°C. Stable for one year after shipment.
Storage Buffer:
PBS with 0.02% sodium azide and 50% glycerol, pH7.3
Aliquoting is unnecessary for -20°C storage

*** 20ul sizes contain 0.1% BSA

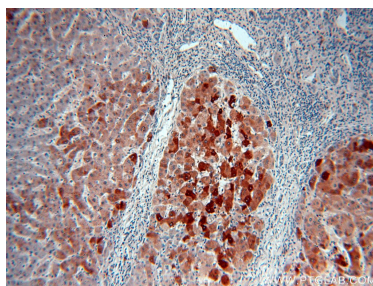
For technical support and original validation data for this product please contact:
T: 1 (888) 4PTGLAB (1-888-478-4522) (toll free in USA), or 1(312) 455-8498 (outside USA)
E: proteintech@ptglab.com
W: ptglab.com

This product is exclusively available under Proteintech Group brand and is not available to purchase from any other manufacturer.

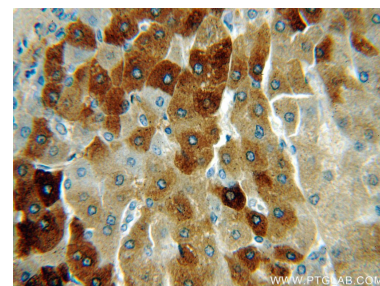
Selected Validation Data



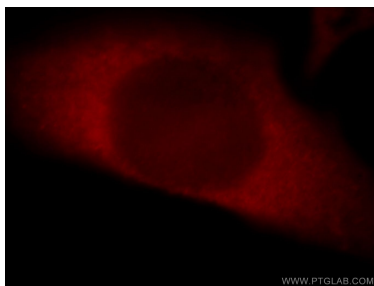
Various lysates were subjected to SDS PAGE followed by western blot with 19807-1-AP (THUMP3 antibody) at dilution of 1:6000 incubated at room temperature for 1.5 hours.



Immunohistochemical analysis of paraffin-embedded human hepatocirrhosis using 19807-1-AP (THUMP3 antibody) at dilution of 1:100 (under 10x lens).



Immunohistochemical analysis of paraffin-embedded human hepatocirrhosis using 19807-1-AP (THUMP3 antibody) at dilution of 1:100 (under 40x lens).



Immunofluorescent analysis of HeLa cells, using THUMP3 antibody 19807-1-AP at 1:25 dilution and Rhodamine-labeled goat anti-rabbit IgG (red).