

For Research Use Only

# RtcB-Specific Polyclonal antibody



Catalog Number: 19809-1-AP

Featured Product

3 Publications

## Basic Information

### Catalog Number:

19809-1-AP

### Size:

150ul , Concentration: 350 µg/ml by Nanodrop and 180 µg/ml by Bradford method using BSA as the standard;

### Source:

Rabbit

### Isotype:

IgG

### Immunogen Catalog Number:

AG13836

### GenBank Accession Number:

BC000151

### GeneID (NCBI):

51493

### Full Name:

chromosome 22 open reading frame 28

### Calculated MW:

55 kDa

### Observed MW:

55 kDa

### Purification Method:

Antigen affinity purification

### Recommended Dilutions:

WB 1:1000-1:6000

IP 0.5-4.0 ug for IP and 1:500-1:1000 for WB

IF 1:10-1:100

## Applications

### Tested Applications:

IF, IP, WB, ELISA

### Cited Applications:

IP, WB

### Species Specificity:

human, mouse

### Cited Species:

human, pig

### Positive Controls:

WB : HeLa cells, mouse brain tissue, Jurkat cells

IP : HeLa cells,

IF : HeLa cells,

## Background Information

RTCB (also known as HSPC117, C22orf28, FAAP and D10Wsu52e) is an essential subunit of a tRNA ligase complex that is involved in RNA repair and stress-induced splicing. As a multifunctional protein, RTCB is also a cell adhesion protein and is important in embryo and placenta development. Recently RTCB has been identified as UPR RNA ligase catalyzing unconventional XBP1 mRNA splicing. This antibody specifically recognizes endogenous RTCB protein. (25087875)

## Notable Publications

Author	Pubmed ID	Journal	Application
Irem Unlu	30355738	J Biol Chem	WB
Carmen Aguilar	34099666	Nat Commun	WB
Yanyan Lu	25087875	Mol Cell	WB, IP

## Storage

### Storage:

Store at -20°C. Stable for one year after shipment.

### Storage Buffer:

PBS with 0.02% sodium azide and 50% glycerol pH 7.3.

Aliquoting is unnecessary for -20°C storage

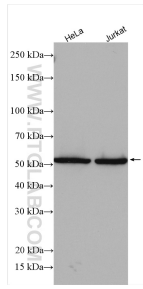
For technical support and original validation data for this product please contact:

T: 1 (888) 4PTGLAB (1-888-478-4522) (toll free in USA), or 1(312) 455-8498 (outside USA)

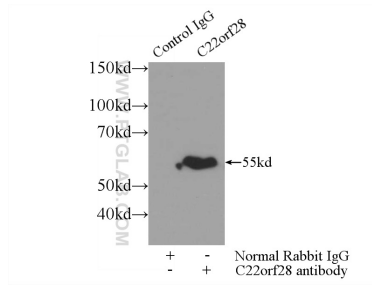
E: [proteintech@ptglab.com](mailto:proteintech@ptglab.com)  
W: [ptglab.com](http://ptglab.com)

This product is exclusively available under Proteintech Group brand and is not available to purchase from any other manufacturer.

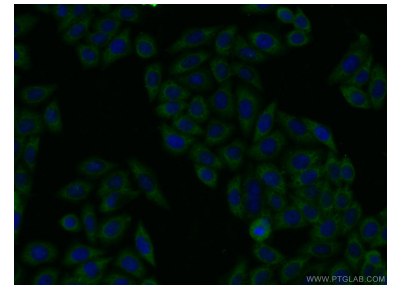
## Selected Validation Data



Various lysates were subjected to SDS PAGE followed by western blot with 19809-1-AP (RtcB-Specific antibody) at dilution of 1:3000 incubated at room temperature for 1.5 hours.



IP Result of anti-RtcB-Specific (IP:19809-1-AP, 3ug; Detection:19809-1-AP 1:500) with HeLa cells lysate 3000ug.



Immunofluorescent analysis of HeLa cells using 19809-1-AP (RtcB-Specific antibody) at dilution of 1:25 and Alexa Fluor 488-conjugated AffiniPure Goat Anti-Rabbit IgG(H+L).