

For Research Use Only

KTN1 Polyclonal antibody

Catalog Number: 19841-1-AP **5 Publications**



Basic Information

Catalog Number:

19841-1-AP

Size:

150ul, Concentration: 1000 µg/ml by Nanodrop and 207 µg/ml by Bradford method using BSA as the standard;

Source:

Rabbit

Isotype:

IgG

Immunogen Catalog Number:

AG13854

GenBank Accession Number:

BC117132

GeneID (NCBI):

3895

Full Name:

kinectin 1 (kinesin receptor)

Calculated MW:

1357 aa, 156 kDa

Observed MW:

156 kDa

Purification Method:

Antigen affinity purification

Recommended Dilutions:

WB 1:2000-1:16000

IP 0.5-4.0 ug for IP and 1:500-1:1000 for WB

IHC 1:50-1:500

IF 1:10-1:100

Applications

Tested Applications:

IF, IHC, IP, WB, ELISA

Cited Applications:

IF, IHC, WB

Species Specificity:

human, mouse

Cited Species:

human, monkey

Note-IHC: suggested antigen retrieval with TE buffer pH 9.0; (*) Alternatively, antigen retrieval may be performed with citrate buffer pH 6.0

Positive Controls:

WB: HeLa cells, mouse testis tissue, Jurkat cells, K-562 cells, PC-3 cells, SKOV-3 cells

IP: Jurkat cells,

IHC: human ovary tumor tissue, human testis tissue

IF: HeLa cells,

Background Information

KTN1/Kinectin is an integral endoplasmic reticulum (ER) membrane protein which acts as dynamic anchor to facilitate ER membrane extension along microtubules. It has been found to bind kinesin, Rho GTPase, and translation elongation factor-1delta and gets involved in organelle motility and protein synthesis.

Notable Publications

Author	Pubmed ID	Journal	Application
Pengli Zheng	30030520	Cell Res	IF
Qingzhou Chen	30773365	Curr Biol	WB
Menno Spits	33554435	EMBO Rep	IF

Storage

Storage:

Store at -20°C. Stable for one year after shipment.

Storage Buffer:

PBS with 0.02% sodium azide and 50% glycerol pH 7.3.

Aliquoting is unnecessary for -20°C storage

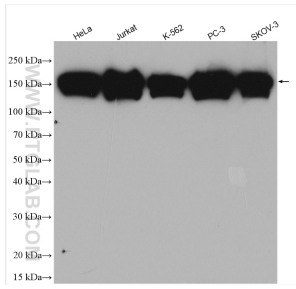
For technical support and original validation data for this product please contact:

T: 1 (888) 4PTGLAB (1-888-478-4522) (toll free in USA), or 1(312) 455-8498 (outside USA)

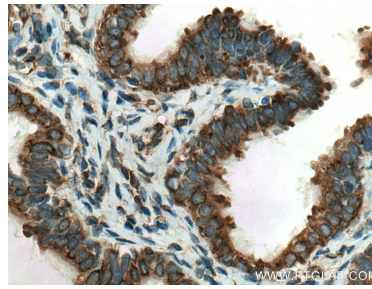
E: proteintech@ptglab.com
W: ptglab.com

This product is exclusively available under Proteintech Group brand and is not available to purchase from any other manufacturer.

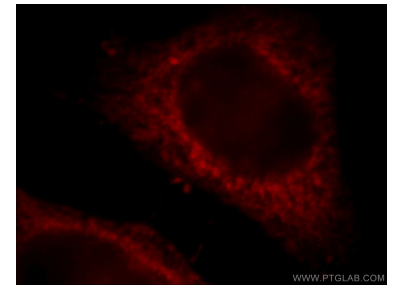
Selected Validation Data



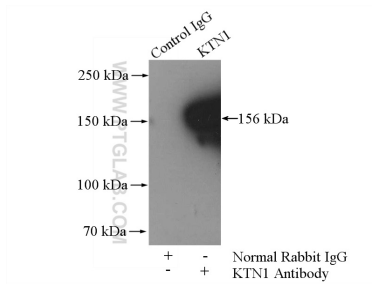
Various lysates were subjected to SDS PAGE followed by western blot with 19841-1-AP (KTN1 antibody) at dilution of 1:8000 incubated at room temperature for 1.5 hours.



Immunohistochemical analysis of paraffin-embedded human ovary tumor tissue slide using 19841-1-AP (KTN1 antibody) at dilution of 1:200 (under 40x lens). Heat mediated antigen retrieval with Tris-EDTA buffer (pH 9.0).



Immunofluorescent analysis of HeLa cells, using KTN1 antibody 19841-1-AP at 1:25 dilution and Rhodamine-labeled goat anti-rabbit IgG (red).



IP Result of anti-KTN1 (IP:19841-1-AP, 4ug; Detection:19841-1-AP 1:500) with Jurkat cells lysate 1200ug.