

For Research Use Only

KDM3B Polyclonal antibody

Catalog Number: 19915-1-AP

2 Publications



Basic Information

Catalog Number:

19915-1-AP

Size:

150ul, Concentration: 500 ug/ml by Nanodrop;

Source:

Rabbit

Isotype:

IgG

Immunogen Catalog Number:

AG13795

GenBank Accession Number:

BC001202

GeneID (NCBI):

51780

UNIPROT ID:

Q7LBC6

Full Name:

lysine (K)-specific demethylase 3B

Calculated MW:

1761 aa, 192 kDa

Observed MW:

192 kDa, 85 kDa

Purification Method:

Antigen affinity purification

Recommended Dilutions:

WB: 1:2000-1:12000

IF/ICC: 1:50-1:500

Applications

Tested Applications:

WB, IF/ICC, ELISA

Cited Applications:

WB

Species Specificity:

human, mouse

Cited Species:

human, mouse

Positive Controls:

WB : HEK-293 cells, human placenta tissue, HeLa cells, HepG2 cells

IF/ICC : A431 cells,

Notable Publications

Author	Pubmed ID	Journal	Application
Wenbo Liu	36355419	eLife	
Yuan Li	32778823	Nat Genet	WB

Storage

Storage:

Store at -20°C. Stable for one year after shipment.

Storage Buffer:

PBS with 0.02% sodium azide and 50% glycerol, pH7.3

Aliquoting is unnecessary for -20°C storage

*** 20ul sizes contain 0.1% BSA

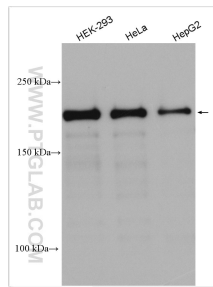
For technical support and original validation data for this product please contact:

T: 1 (888) 4PTGLAB (1-888-478-4522) (toll free in USA), or 1(312) 455-8498 (outside USA)

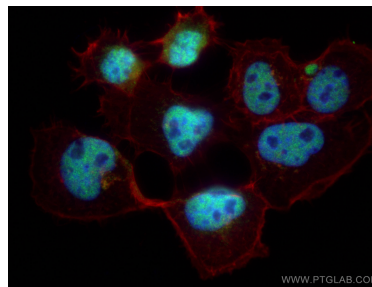
E: proteintech@ptglab.com
W: ptglab.com

This product is exclusively available under Proteintech Group brand and is not available to purchase from any other manufacturer.

Selected Validation Data



Various lysates were subjected to SDS PAGE followed by western blot with 19915-1-AP (KDM3B antibody) at dilution of 1:6000 incubated at room temperature for 1.5 hours.



Immunofluorescent analysis of (4% PFA) fixed A431 cells using KDM3B antibody (19915-1-AP) at dilution of 1:200 and CoraLite®488-Conjugated Goat Anti-Rabbit IgG(H+L), CL594-Phalloidin (red).