

For Research Use Only

IGFBP7 Polyclonal antibody

Catalog Number: 19961-1-AP

Featured Product

11 Publications



Basic Information

Catalog Number:

19961-1-AP

Size:

150ul, Concentration: 800 ug/ml by Nanodrop;

Source:

Rabbit

Isotype:

IgG

GenBank Accession Number:

NM_001553

GeneID (NCBI):

3490

UNIPROT ID:

Q16270

Full Name:

insulin-like growth factor binding protein 7

Calculated MW:

29 kDa

Observed MW:

30 kDa

Purification Method:

Antigen affinity purification

Recommended Dilutions:

WB: 1:1000-1:5000

IP: 0.5-4.0 ug for 1.0-3.0 mg of total protein lysate

IHC: 1:20-1:200

Applications

Tested Applications:

WB, IP, IHC, ELISA

Cited Applications:

WB, IHC, IF

Species Specificity:

human, mouse, rat

Cited Species:

human, mouse, rat

Note-IHC: suggested antigen retrieval with TE buffer pH 9.0; (*) Alternatively, antigen retrieval may be performed with citrate buffer pH 6.0

Positive Controls:

WB : Jurkat cells, MOLT-4 cells, SKOV-3 cells, THP-1 cells

IP : mouse appendix tissue,

IHC : human liver cancer tissue, human liver tissue

Background Information

IGFBP7, also named as MAC25, PSF, IBP-7 and TAF, binds IGF-I and IGF-II with a relatively low affinity. IGFBP7 stimulates prostacyclin (PGI2) production. IGFBP7 stimulates cell adhesion.

Notable Publications

Author	Pubmed ID	Journal	Application
Wei Dang	34634383	Cancer Lett	IHC, WB
Ali C M Johnson	29980651	J Am Soc Nephrol	IHC
Sandeep Aryal	31797049	Hum Genet	IF

Storage

Storage:

Store at -20°C. Stable for one year after shipment.

Storage Buffer:

PBS with 0.02% sodium azide and 50% glycerol, pH7.3

Aliquoting is unnecessary for -20°C storage

*** 20ul sizes contain 0.1% BSA

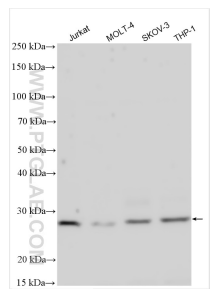
For technical support and original validation data for this product please contact:

T: 1 (888) 4PTGLAB (1-888-478-4522) (toll free in USA), or 1(312) 455-8498 (outside USA)

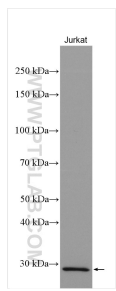
E: proteintech@ptglab.com
W: ptglab.com

This product is exclusively available under Proteintech Group brand and is not available to purchase from any other manufacturer.

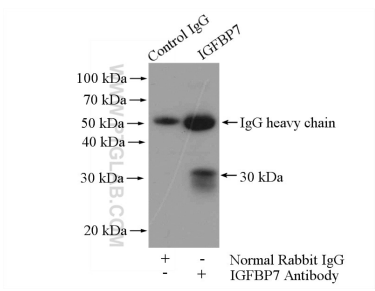
Selected Validation Data



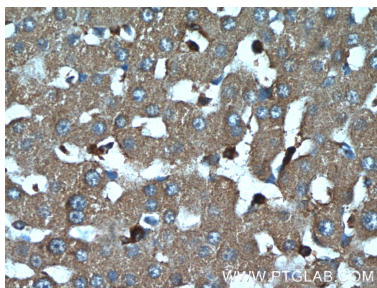
Various lysates were subjected to SDS PAGE followed by western blot with 19961-1-AP (IGFBP7 antibody) at dilution of 1:2500 incubated at room temperature for 1.5 hours.



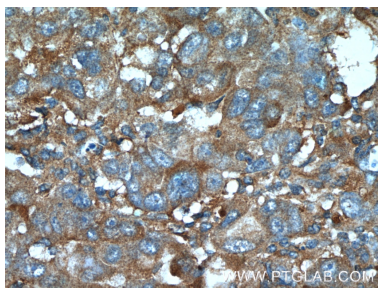
Jurkat cells were subjected to SDS PAGE followed by western blot with 19961-1-AP (IGFBP7 antibody) at dilution of 1:1500 incubated at room temperature for 1.5 hours.



IP result of anti-IGFBP7 (IP:19961-1-AP, 4ug; Detection:19961-1-AP 1:300) with mouse appendix tissue lysate 6000ug.



Immunohistochemical analysis of paraffin-embedded human liver tissue slide using 19961-1-AP (IGFBP7 Antibody) at dilution of 1:50 (under 40x lens).



Immunohistochemical analysis of paraffin-embedded human liver cancer tissue slide using 19961-1-AP (IGFBP7 Antibody) at dilution of 1:50 (under 40x lens).



Various lysates were subjected to SDS PAGE followed by western blot with 19961-1-AP (IGFBP7 antibody) at dilution of 1:1000 incubated at room temperature for 1.5 hours.