

For Research Use Only

LHCGR Polyclonal antibody

Catalog Number: 19968-1-AP

Featured Product

32 Publications



Basic Information

Catalog Number:

19968-1-AP

Size:

150ul, Concentration: 1000 ug/ml by Nanodrop;

Source:

Rabbit

Isotype:

IgG

GenBank Accession Number:

NM_000233

GeneID (NCBI):

3973

UNIPROT ID:

P22888

Full Name:

LHCGR

Calculated MW:

79 kDa

Observed MW:

90-100 kDa

Purification Method:

Antigen affinity purification

Recommended Dilutions:

WB 1:500-1:3000

IP 0.5-4.0 ug for 1.0-3.0 mg of total protein lysate

IF-P 1:50-1:500

Applications

Tested Applications:

WB, IF-P, IP, ELISA

Cited Applications:

WB, IHC

Species Specificity:

human, mouse, rat

Cited Species:

human, mouse, rat, pig, sheep

Positive Controls:

WB : unboiled mouse testis tissue, mouse ovary tissue

IP : mouse testis tissue,

IF-P : mouse ovary tissue,

Background Information

Lutropin-choriogonadotropic hormone receptor (LHCGR, also known as LHR or LSHR) belongs to the rhodopsin-like family of G protein-coupled receptors (GPCRs). It plays a crucial role in the regulation of gonadal functions by stimulating steroidogenesis in response to luteinizing hormone (LH) or hCG (PMID: 15866423). Mutations in the LHCGR gene result in familial male-limited precocious puberty, Leydig cell hypoplasia, and empty follicle syndrome (PMID: 30711030). LHCGR protein consists of 699 amino acids with a calculated molecular weight of 79 kDa. Due to massive glycosylation, the molecular mass of the mature LHCGR is higher (85-100 kDa) than the predicted molecular protein mass of 79 kDa (PMID: 23686864; 15866423; 29075189; 15969756).

Notable Publications

Author	Pubmed ID	Journal	Application
Yu-Meng Wang	34697294	Cell Death Dis	WB
Yu Su	34039393	Nutr Metab (Lond)	WB, IHC
Lu Yuan	32523341	Int J Nanomedicine	WB

Storage

Storage:

Store at -20°C. Stable for one year after shipment.

Storage Buffer:

PBS with 0.02% sodium azide and 50% glycerol, pH7.3

Aliquoting is unnecessary for -20°C storage

*** 20ul sizes contain 0.1% BSA

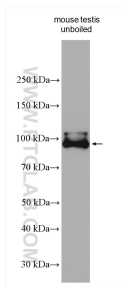
For technical support and original validation data for this product please contact:

T: 1 (888) 4PTGLAB (1-888-478-4522) (toll free in USA), or 1(312) 455-8498 (outside USA)

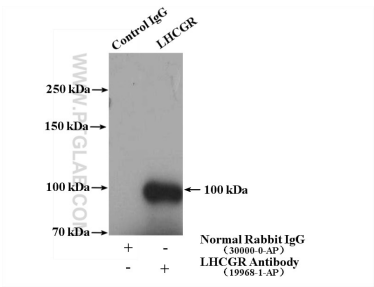
E: proteintech@ptglab.com
W: ptglab.com

This product is exclusively available under Proteintech Group brand and is not available to purchase from any other manufacturer.

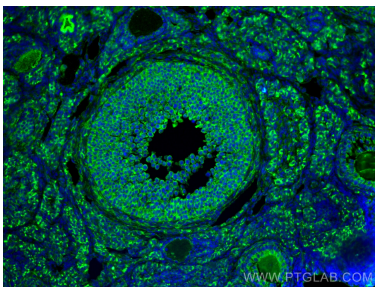
Selected Validation Data



Unboiled mouse testis tissue was subjected to SDS PAGE followed by western blot with 19968-1-AP (LHCGR antibody) at dilution of 1:1500 incubated at room temperature for 1.5 hours.



IP result of anti-LHCGR (IP:19968-1-AP, 4ug; Detection:19968-1-AP 1:300) with mouse testis tissue lysate 4000ug.



Immunofluorescent analysis of (4% PFA) fixed mouse ovary tissue using LHCGR antibody (19968-1-AP) at dilution of 1:200 and CoraLite®488-Conjugated AffiniPure Goat Anti-Rabbit IgG(H+L).