

For Research Use Only

# KI67 Polyclonal antibody

Catalog Number: 19972-1-AP **35 Publications**



## Basic Information

<b>Catalog Number:</b> 19972-1-AP	<b>GenBank Accession Number:</b> NM_002417	<b>Purification Method:</b> Antigen affinity purification
<b>Size:</b> 150UL, Concentration: 147 µg/ml by Bradford method using BSA as the standard;	<b>GeneID (NCBI):</b> 4288	<b>Recommended Dilutions:</b> IHC 1:200-1:800
<b>Source:</b> Rabbit	<b>Full Name:</b> antigen identified by monoclonal antibody Ki-67	
<b>Isotype:</b> IgG	<b>Calculated MW:</b> 359 kDa	

## Applications

<b>Tested Applications:</b> IHC, ELISA	<b>Positive Controls:</b> IHC : human breast cancer tissue,
<b>Cited Applications:</b> IHC, WB	
<b>Species Specificity:</b> human	
<b>Cited Species:</b> human, mouse, rat	

**Note-IHC: suggested antigen retrieval with TE buffer pH 9.0; (\*) Alternatively, antigen retrieval may be performed with citrate buffer pH 6.0**

## Background Information

MKI67 gene encodes a nuclear protein, antigen Ki-67, which was identified by monoclonal antibody Ki-67. Expression of this antigen occurs preferentially during late G1, S, G2 and M phases of the cell cycle, while in cells in G0 phase the antigen cannot be detected (PMID: 8227122). The antigen Ki-67 is a human nuclear protein the expression of which is strictly associated with cell proliferation and which is widely used in routine pathology as a "proliferation marker" to measure the growth fraction of cells in human tumors (PMID: 8227122).

## Notable Publications

Author	Pubmed ID	Journal	Application
Musin Kelel	32888953	J Invest Dermatol	IHC
Kai Tie	26499267	FASEB J	IHC
Yuan Zhang	26487539	Sci Rep	IHC

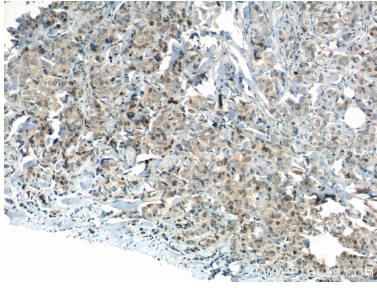
## Storage

**Storage:**  
Store at -20°C. Stable for one year after shipment.  
**Storage Buffer:**  
PBS with 0.1% sodium azide and 50% glycerol pH 7.3.  
Aliquoting is unnecessary for -20°C storage

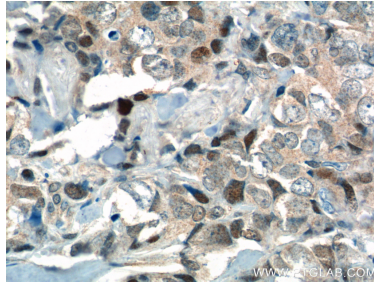
For technical support and original validation data for this product please contact:  
T: 1 (888) 4PTGLAB (1-888-478-4522) (toll free in USA), or 1(312) 455-8498 (outside USA)  
E: proteintech@ptglab.com  
W: ptglab.com

**This product is exclusively available under Proteintech Group brand and is not available to purchase from any other manufacturer.**

## Selected Validation Data



Immunohistochemical analysis of paraffin-embedded human breast cancer tissue slide using 19972-1-AP (Ki67 Antibody) at dilution of 1:400 (under 10x lens). Heat mediated antigen retrieved with Sodium Citrate buffer (pH 6.0).



Immunohistochemical analysis of paraffin-embedded human breast cancer tissue slide using 19972-1-AP (Ki67 Antibody) at dilution of 1:400 (under 40x lens). Heat mediated antigen retrieved with Sodium Citrate buffer (pH 6.0).