

For Research Use Only

PRKCQ-Specific Polyclonal antibody

Catalog Number:19982-1-AP



Basic Information

Catalog Number:

19982-1-AP

Size:

150ul , Concentration: 550 ug/ml by Nanodrop;

Source:

Rabbit

Isotype:

IgG

GenBank Accession Number:

NM_006257

GeneID (NCBI):

5588

UNIPROT ID:

Q04759

Full Name:

protein kinase C, theta

Calculated MW:

82 kDa

Observed MW:

72-74 kDa

Purification Method:

Antigen affinity purification

Recommended Dilutions:

WB: 1:500-1:1000

IP: 0.5-4.0 ug for 1.0-3.0 mg of total protein lysate

FC (Intra): 0.20 ug per 10⁶ cells in a 100 µl suspension

Applications

Tested Applications:

WB, FC (Intra), IP, ELISA

Species Specificity:

human

Positive Controls:

WB : Jurkat cells, MOLT-4 cells

IP : K-562 cells,

FC (Intra) : K-562 cells,

Background Information

PRKCQ, also named as PRKCT and nPKC-theta, belongs to the protein kinase superfamily, AGC Ser/Thr protein kinase family and PKC subfamily. PRKCQ catalyzes the reaction: ATP + a protein = ADP + a phosphoprotein. PRKCQ is a calcium-independent, phospholipid-dependent, serine- and threonine-specific enzyme. It is essential for T-cell receptor (TCR)-mediated T-cell activation, but it is dispensable during TCR-dependent thymocyte development. PRKCQ links the TCR signaling complex to the activation of NF-kappa-B in mature T lymphocytes. It is required for interleukin-2 (IL2) production. PKC is activated by diacylglycerol which in turn phosphorylates a range of cellular proteins. PKC also serves as the receptor for phorbol esters, a class of tumor promoters. This antibody is specific to PRKCQ.

Storage

Storage:

Store at -20°C. Stable for one year after shipment.

Storage Buffer:

PBS with 0.02% sodium azide and 50% glycerol, pH7.3

Aliquoting is unnecessary for -20°C storage

*** 20ul sizes contain 0.1% BSA

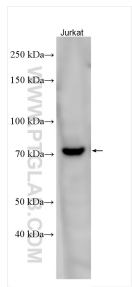
For technical support and original validation data for this product please contact:

T: 1 (888) 4PTGLAB (1-888-478-4522) (toll free in USA), or 1(312) 455-8498 (outside USA)

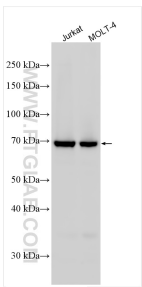
E: proteintech@ptglab.com
W: ptglab.com

This product is exclusively available under Proteintech Group brand and is not available to purchase from any other manufacturer.

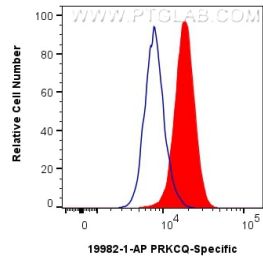
Selected Validation Data



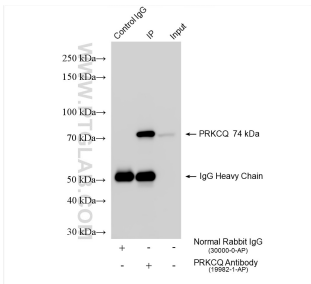
Various lysates were subjected to SDS PAGE followed by western blot with 19982-1-AP (PRKCQ-Specific antibody) at dilution of 1:500 incubated at room temperature for 1.5 hours.



Various lysates were subjected to SDS PAGE followed by western blot with 19982-1-AP (PRKCQ-Specific antibody) at dilution of 1:500 incubated at room temperature for 1.5 hours.



1x10⁶ K-562 cells were intracellularly stained with 0.2 ug PRKCQ-Specific Polyclonal antibody (19982-1-AP) and CoraLite®488-Conjugated Goat Anti-Rabbit IgG(H+L) (SA00013-2)(red), or 0.2 ug Rabbit IgG control Rabbit PolyAb (30000-0-AP) (blue). Cells were fixed with 4% PFA and permeabilized with Flow Cytometry Perm Buffer (PF00011-C).



IP result of anti-PRKCQ-Specific (IP:19982-1-AP, 4ug; Detection:19982-1-AP 1:500) with K-562 cells lysate 1600 ug.