

For Research Use Only

# HBE1-Specific Polyclonal antibody

Catalog Number: 19994-1-AP



## Basic Information

<b>Catalog Number:</b> 19994-1-AP	<b>GenBank Accession Number:</b> NM_005330	<b>Purification Method:</b> Antigen affinity purification
<b>Size:</b> 150UL, Concentration: 220 µg/ml by Nanodrop and 207 µg/ml by Bradford method using BSA as the standard;	<b>GeneID (NCBI):</b> 3046	<b>Recommended Dilutions:</b> WB 1:200-1:1000
<b>Source:</b> Rabbit	<b>Full Name:</b> hemoglobin, epsilon 1	
<b>Isotype:</b> IgG	<b>Calculated MW:</b> 16 kDa	

## Applications

<b>Tested Applications:</b> WB, ELISA	<b>Positive Controls:</b> WB : recombinant protein,
<b>Species Specificity:</b> human	

## Background Information

The hemoglobin molecule is a tetramer consisting of two  $\alpha$ -globin-like polypeptide chains and two  $\beta$ -globin-like chains. The human hemoglobin genes are expressed in a tightly developmentally controlled fashion.  $\epsilon$ -globin (HBE1) is the predominantly expressed gene during the embryonic stage. The epsilon haemoglobin chain seems to be the best marker for fetal NRBCs and may be useful in prenatal diagnosis. The antibody is specific to HBE1.

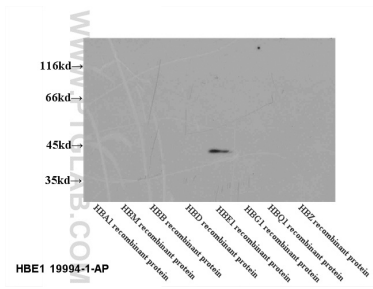
## Storage

**Storage:**  
Store at  $-20^{\circ}\text{C}$ . Stable for one year after shipment.  
**Storage Buffer:**  
PBS with 0.02% sodium azide and 50% glycerol pH 7.3.  
Aliquoting is unnecessary for  $-20^{\circ}\text{C}$  storage

For technical support and original validation data for this product please contact:  
T: 1 (888) 4PTGLAB (1-888-478-4522) (toll free in USA), or 1(312) 455-8498 (outside USA)  
E: proteintech@ptglab.com  
W: ptglab.com

This product is exclusively available under Proteintech Group brand and is not available to purchase from any other manufacturer.

## Selected Validation Data



WB results of 19994-1-AP (HBE1 antibody) at dilution of 1:2000.