

For Research Use Only

# TGF-beta 2-Specific Polyclonal ANTIBODY



Catalog Number: 19999-1-AP

Featured Product

12 Publications

## Basic Information

Catalog Number:  
19999-1-AP

Size:  
35 µg/150 µl

Source:  
Rabbit

Isotype:  
IgG

Purification Method:  
Antigen affinity purification

Immunogen Catalog Number:

GenBank Accession Number:  
NM\_003238

GeneID (NCBI):  
7042

Full Name:  
transforming growth factor, beta 2

Calculated MW:  
48 kDa

Observed MW:  
48 kDa

Recommended Dilutions:

WB 1:500-1:1000

IHC 1:50-1:500

IF 1:20-1:200

## Applications

Tested Applications:  
IF, IHC, WB, ELISA

Cited Applications:  
IF, IHC, WB

Species Specificity:  
human,mouse

Cited Species:  
human, mouse, rat

**Note-IHC: suggested antigen retrieval with TE buffer pH 9.0; (\*) Alternatively, antigen retrieval may be performed with citrate buffer pH 6.0**

Positive Controls:

WB : K-562 cells; HeLa cells, A549 cells, mouse lung tissue

IHC : human breast cancer tissue;

IF : HeLa cells;

## Background Information

Transforming growth factor beta-2 (TGFB2), also named G-TSF, BSC-1 cell growth inhibitor, Polyergin and Cetermin, belongs to the TGF-beta family. TGFB2 is a secreted protein and contains a 19aa signal peptides at its N-terminal. Heterodimers with TGFB1 and with TGFB2 have been found in bone. It was proved to have suppressive effects on interleukin-2 dependent T-cell growth. This antibody is TGFB2 specific not detecting other TGFBs.

## Notable Publications

Author	Pubmed ID	Journal	Application
Zichang Zhao	30271117	Drug Des Devel Ther	WB,IHC
Dan Liu	25142796	Cancer Res	IHC
Li-Yuan Yu-Lee	29514796	Cancer Res	WB,IF

## Storage

Storage:

Store at -20°C. Stable for one year after shipment.

Storage Buffer:

PBS with 0.02% sodium azide and 50% glycerol pH 7.3.

Aliquoting is unnecessary for -20°C storage

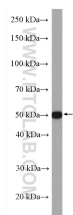
For technical support and original validation data for this product please contact:

T: 1 (888) 4PTGLAB (1-888-478-4522) (toll free in USA), or 1(312) 455-8498 (outside USA)

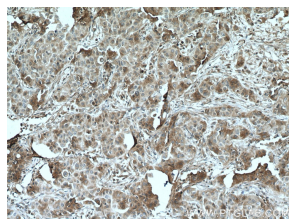
E: [proteintech@ptglab.com](mailto:proteintech@ptglab.com)  
W: [ptglab.com](http://ptglab.com)

This product is exclusively available under Proteintech Group brand and is not available to purchase from any other manufacturer.

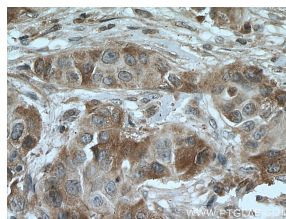
## Selected Validation Data



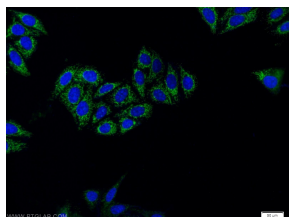
K-562 cells were subjected to SDS PAGE followed by western blot with 19999-1-AP (TGF-beta 2-Specific antibody) at dilution of 1:600 incubated at room temperature for 1.5 hours



Immunohistochemical analysis of paraffin-embedded human breast cancer tissue slide using 19999-1-AP (TGF-beta 2-Specific antibody) at dilution of 1:200 (under 10x lens) heat mediated antigen retrieved with Tris-EDTA buffer(pH9).



Immunohistochemical analysis of paraffin-embedded human breast cancer tissue slide using 19999-1-AP (TGF-beta 2-Specific antibody) at dilution of 1:200 (under 40x lens) heat mediated antigen retrieved with Tris-EDTA buffer(pH9).



Immunofluorescent analysis of HeLa cells using 19999-1-AP (TGF-beta 2-Specific antibody) at dilution of 1:50 and Alexa Fluor 488-conjugated AffiniPure Goat Anti-Rabbit IgG(H+L)