

For Research Use Only

# TGFBR3-Specific Polyclonal antibody



Catalog Number: 20000-1-AP

Featured Product

2 Publications

## Basic Information

**Catalog Number:**

20000-1-AP

**Size:**

150ul , Concentration: 500 µg/ml by Nanodrop and 293 µg/ml by Bradford method using BSA as the standard;

**Source:**

Rabbit

**Isotype:**

IgG

**GenBank Accession Number:**

NM\_003243

**GeneID (NCBI):**

7049

**Full Name:**

transforming growth factor, beta receptor III

**Calculated MW:**

93 kDa

**Observed MW:**

110-150 kDa

**Purification Method:**

Antigen affinity purification

**Recommended Dilutions:**

WB 1:500-1:2000

## Applications

**Tested Applications:**

FC, WB, ELISA

**Cited Applications:**

IF, WB

**Species Specificity:**

human

**Cited Species:**

human, mouse

**Positive Controls:**

WB : A549 cells, A431 cells

## Background Information

TGFBR3, also named as TGFR-3, BGCAN and betaglycan, binds to TGF-beta. TGFBR3 could be involved in capturing and retaining TGF-beta for presentation to the signaling receptors. This antibody is specific to TGFBR3.

## Notable Publications

Author	Pubmed ID	Journal	Application
Wenxiang Zhu	34656907	Int Immunopharmacol	
Li-Yuan Yu-Lee	29514796	Cancer Res	WB,IF

## Storage

**Storage:**

Store at -20°C. Stable for one year after shipment.

**Storage Buffer:**

PBS with 0.02% sodium azide and 50% glycerol pH 7.3.

Aliquoting is unnecessary for -20°C storage

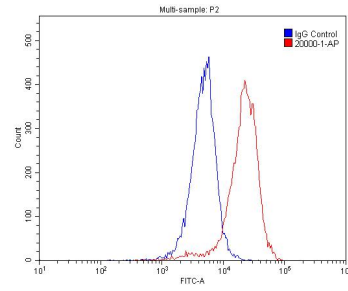
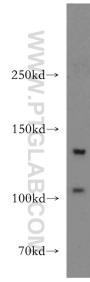
For technical support and original validation data for this product please contact:

T: 1 (888) 4PTGLAB (1-888-478-4522) (toll free in USA), or 1(312) 455-8498 (outside USA)

E: proteintech@ptglab.com  
W: ptglab.com

This product is exclusively available under Proteintech Group brand and is not available to purchase from any other manufacturer.

## Selected Validation Data



A549 cells were subjected to SDS PAGE followed by western blot with 20000-1-AP (TGFB $\beta$ 3-Specific antibody) at dilution of 1:300 incubated at room temperature for 1.5 hours.

$1 \times 10^6$  A549 cells were stained with 0.2ug TGFB $\beta$ 3-Specific antibody (20000-1-AP, red) and control antibody (blue). Fixed with 4% PFA blocked with 3% BSA (30 min). Alexa Fluor 488-conjugated AffiniPure Goat Anti-Rabbit IgG(H+L) with dilution 1:1500.