

For Research Use Only

# GPR101-Specific Polyclonal antibody

Catalog Number: 20074-1-AP



## Basic Information

### Catalog Number:

20074-1-AP

### Size:

150ul , Concentration: 173 ug/ml by Nanodrop and 173 ug/ml by Bradford method using BSA as the standard;

### Source:

Rabbit

### Isotype:

IgG

### GenBank Accession Number:

NM\_054021

### GeneID (NCBI):

83550

### UNIPROT ID:

Q96P66

### Full Name:

G protein-coupled receptor 101

### Calculated MW:

57 kDa

### Observed MW:

57 kDa

### Purification Method:

Antigen affinity purification

### Recommended Dilutions:

WB: 1:500-1:1000

IHC: 1:500-1:2000

FC (Intra): 0.20 ug per 10<sup>6</sup> cells in a 100 µl suspension

## Applications

### Tested Applications:

WB, IHC, FC (Intra), ELISA

### Species Specificity:

human, monkey

**Note-IHC: suggested antigen retrieval with TE buffer pH 9.0; (\*) Alternatively, antigen retrieval may be performed with citrate buffer pH 6.0**

### Positive Controls:

WB : HEK-293 cells, COS-7 cells

IHC : mouse kidney tissue,

FC (Intra) : HEK-293 cells,

## Background Information

GPR101, also named as GPCR6, belongs to the G-protein coupled receptor 1 family. It is an orphan receptor. This antibody is specific to GPR101.

## Storage

### Storage:

Store at -20°C. Stable for one year after shipment.

### Storage Buffer:

PBS with 0.02% sodium azide and 50% glycerol, pH7.3

Aliquoting is unnecessary for -20°C storage

\*\*\* 20ul sizes contain 0.1% BSA

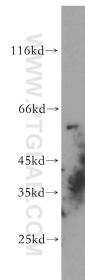
For technical support and original validation data for this product please contact:

T: 1 (888) 4PTGLAB (1-888-478-4522) (toll free in USA), or 1(312) 455-8498 (outside USA)

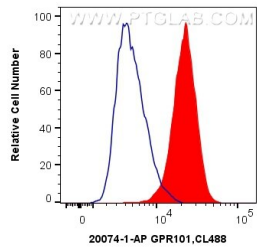
E: [proteintech@ptglab.com](mailto:proteintech@ptglab.com)  
W: [ptglab.com](http://ptglab.com)

This product is exclusively available under Proteintech Group brand and is not available to purchase from any other manufacturer.

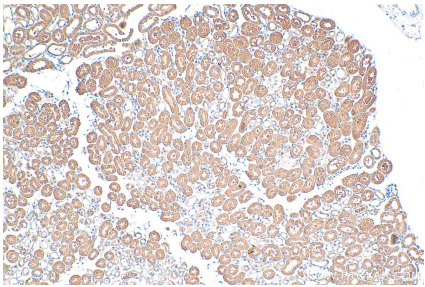
Selected Validation Data



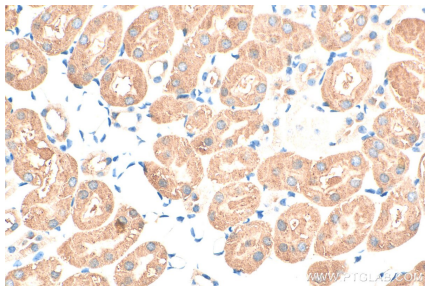
HEK-293 cells were subjected to SDS PAGE followed by western blot with 20074-1-AP (GPR101-Specific antibody) at dilution of 1:300 incubated at room temperature for 1.5 hours.



1X10<sup>6</sup> HEK-293 cells were intracellularly stained with 0.2 ug Anti-Human GPR101-Specific (20074-1-AP) and CoraLite®488-Conjugated AffiniPure Goat Anti-Rabbit IgG(H+L) at dilution 1:1000 (red), or 0.2 ug Control Antibody. Cells were fixed with 4% PFA and permeabilized with Flow Cytometry Perm Buffer (PF00011-C).



Immunohistochemical analysis of paraffin-embedded mouse kidney tissue slide using 20074-1-AP (GPR101-Specific antibody) at dilution of 1:1000 (under 10x lens). Heat mediated antigen retrieval with Tris-EDTA buffer (pH 9.0).



Immunohistochemical analysis of paraffin-embedded mouse kidney tissue slide using 20074-1-AP (GPR101-Specific antibody) at dilution of 1:1000 (under 40x lens). Heat mediated antigen retrieval with Tris-EDTA buffer (pH 9.0).