

For Research Use Only

# GAB3-Specific Polyclonal antibody

Catalog Number: 20089-1-AP



## Basic Information

<b>Catalog Number:</b> 20089-1-AP	<b>GenBank Accession Number:</b> NM_001081573	<b>Purification Method:</b> Antigen affinity purification
<b>Size:</b> 150ul, Concentration: 600 µg/ml by Nanodrop and 233 µg/ml by Bradford method using BSA as the standard;	<b>GeneID (NCBI):</b> 139716	<b>Recommended Dilutions:</b> WB 1:500-1:1000 IP 0.5-4.0 ug for IP and 1:1000-1:4000 for WB
<b>Source:</b> Rabbit	<b>Full Name:</b> GRB2-associated binding protein 3	<b>IHC 1:50-1:500</b> <b>IF 1:50-1:500</b>
<b>Isotype:</b> IgG	<b>Calculated MW:</b> 66 kDa	
	<b>Observed MW:</b> 60-66 kDa	

## Applications

**Tested Applications:**  
IF, IHC, IP, WB, ELISA

**Species Specificity:**  
human, mouse, rat

**Note-IHC: suggested antigen retrieval with TE buffer pH 9.0; (\*) Alternatively, antigen retrieval may be performed with citrate buffer pH 6.0**

**Positive Controls:**

**WB:** mouse brain tissue, HepG2 cells, MCF-7 cells

**IP:** MCF-7 cells,

**IHC:** human liver cancer tissue,

**IF:** MCF-7 cells,

## Background Information

GAB3 belongs to the GAB family. GAB3 interacts with PIK3R/p85, SHP2 and GRAP2/MONA. It may interact with Grb2. The antibody is specific to GAB3.

## Storage

**Storage:**

Store at -20°C. Stable for one year after shipment.

**Storage Buffer:**

PBS with 0.02% sodium azide and 50% glycerol pH 7.3.

Aliquoting is unnecessary for -20°C storage

\*\*\* 20ul sizes contain 0.1% BSA

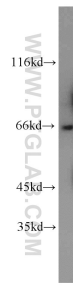
For technical support and original validation data for this product please contact:

T: 1 (888) 4PTGLAB (1-888-478-4522) (toll free in USA), or 1(312) 455-8498 (outside USA)

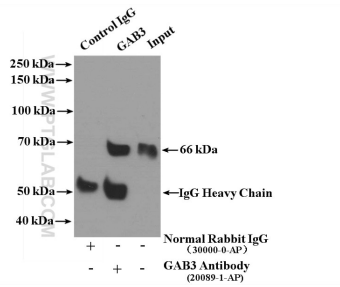
E: [proteintech@ptglab.com](mailto:proteintech@ptglab.com)  
W: [ptglab.com](http://ptglab.com)

This product is exclusively available under Proteintech Group brand and is not available to purchase from any other manufacturer.

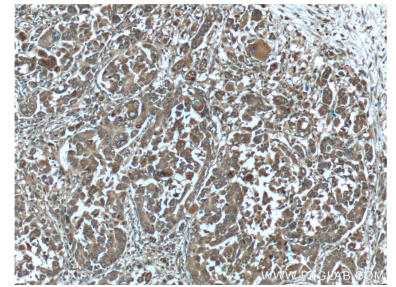
## Selected Validation Data



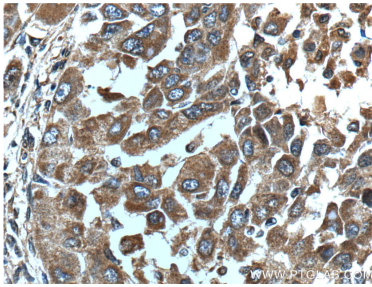
mouse brain tissue were subjected to SDS PAGE followed by western blot with 20089-1-AP (GAB3-Specific antibody) at dilution of 1:500 incubated at room temperature for 1.5 hours.



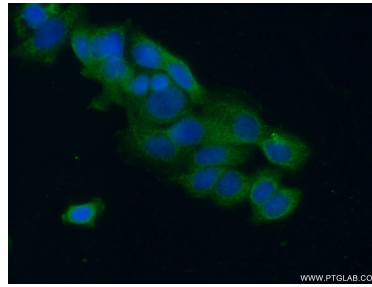
IP Result of anti-GAB3-Specific (IP:20089-1-AP, 4ug; Detection:20089-1-AP 1:2000) with MCF-7 cells lysate 3200ug.



Immunohistochemical analysis of paraffin-embedded human liver cancer tissue slide using 20089-1-AP (GAB3-Specific Antibody) at dilution of 1:200 (under 10x lens).



Immunohistochemical analysis of paraffin-embedded human liver cancer tissue slide using 20089-1-AP (GAB3-Specific Antibody) at dilution of 1:200 (under 40x lens).



Immunofluorescent analysis of (-20°C Ethanol) fixed MCF-7 cells using 20089-1-AP (GAB3-Specific antibody) at dilution of 1:50 and Alexa Fluor 488-conjugated AffiniPure Goat Anti-Rabbit IgG(H+L).