

For Research Use Only

# DGKK-Specific Polyclonal ANTIBODY



Catalog Number: 20090-1-AP

## Basic Information

**Catalog Number:**

20090-1-AP

**Size:**

150UL, Concentration: 300 µg/ml by Bradford method using BSA as the standard;

**Source:**

Rabbit

**Isotype:**

IgG

**GenBank Accession Number:**

NM\_001013742

**GeneID (NCBI):**

139189

**Full Name:**

diacylglycerol kinase, kappa

**Calculated MW:**

142 kDa

**Observed MW:**

135-140 kDa

**Purification Method:**

Antigen affinity purification

**Recommended Dilutions:**

WB 1:500-1:2000

IF 1:10-1:100

## Applications

**Tested Applications:**

IF, WB, ELISA

**Species Specificity:**

human

**Positive Controls:**

WB : human testis tissue, HuH-7 cells

IF : HepG2 cells,

## Background Information

DGKK belongs to the eukaryotic diacylglycerol kinase family. DGKK phosphorylates diacylglycerol (DAG) to generate phosphatidic acid (PA). DGKK catalyze the reaction:  $ATP + 1,2\text{-diacylglycerol} = ADP + 1,2\text{-diacyl-sn-glycerol 3-phosphate}$ . The antibody is specific to DGKK.

## Storage

**Storage:**

Store at -20°C. Stable for one year after shipment.

**Storage Buffer:**

PBS with 0.02% sodium azide and 50% glycerol pH 7.3.

Aliquoting is unnecessary for -20°C storage

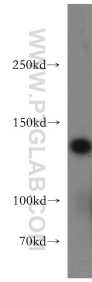
For technical support and original validation data for this product please contact:

T: 1 (888) 4PTGLAB (1-888-478-4522) (toll free in USA), or 1(312) 455-8498 (outside USA)

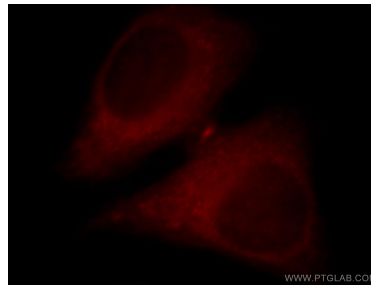
E: [proteintech@ptglab.com](mailto:proteintech@ptglab.com)  
W: [ptglab.com](http://ptglab.com)

This product is exclusively available under Proteintech Group brand and is not available to purchase from any other manufacturer.

## Selected Validation Data



human testis tissue were subjected to SDS PAGE followed by western blot with 20090-1-AP (DGKK-Specific antibody) at dilution of 1:400 incubated at room temperature for 1.5 hours.



Immunofluorescent analysis of HepG2 cells, using DGKK antibody 20090-1-AP at 1:25 dilution and Rhodamine-labeled goat anti-rabbit IgG (red).