

For Research Use Only

ACTR10 Polyclonal ANTIBODY



Catalog Number: 20101-1-AP

Featured Product

3 Publications

Basic Information

Catalog Number:
20101-1-AP

Size:
36 µg/150 µl

Source:
Rabbit

Isotype:
IgG

Purification Method:
Antigen affinity purification

Immunogen Catalog Number:
AG13612

GenBank Accession Number:
BC011997

GeneID (NCBI):
55860

Full Name:
actin-related protein 10 homolog (S. cerevisiae)

Calculated MW:
417aa, 46 kDa

Observed MW:
46 kDa

Recommended Dilutions:

WB 1:500-1:1000

IP 0.5-4.0 µg for IP and 1:200-1:1000 for WB

IHC 1:20-1:200

IF 1:10-1:100

Applications

Tested Applications:
IF, IHC, IP, WB, ELISA

Cited Applications:
WB

Species Specificity:
human, mouse, rat

Cited Species:
human, Mbnkey, rat

Note: suggested antigen retrieval with TE buffer pH 9.0; (*) Alternatively, antigen retrieval may be performed with citrate buffer pH 6.0

Positive Controls:

WB : mouse brain tissue;

IP : mouse brain tissue;

IHC : human hepatocirrhosis tissue;

IF : HepG2 cells;

Background Information

Notable Publications

Author	Pubmed ID	Journal	Application
Amy L Herbert	29073112	Proc Natl Acad Sci U S A	WB
Ting-Yu Yeh	22918948	Mbl Biol Cell	WB
Florenzia di Pietro	28803871	Curr Biol	WB

Storage

Storage:

Store at -20°C. Stable for one year after shipment.

Storage Buffer:

PBS with 0.02% sodium azide and 50% glycerol pH 7.3.

Aliquoting is unnecessary for -20°C storage

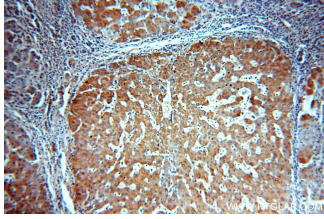
For technical support and original validation data for this product please contact:

T: 1 (888) 4PTGLAB (1-888-478-4522) (toll free in USA), or 1(312) 455-8498 (outside USA)

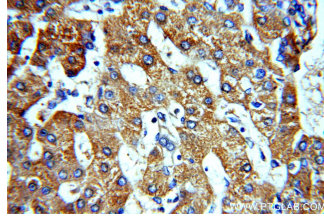
E: proteintech@ptglab.com
W: ptglab.com

This product is exclusively available under Proteintech Group brand and is not available to purchase from any other manufacturer.

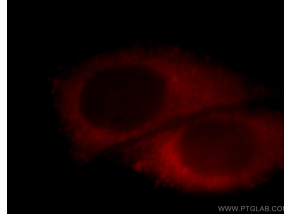
Selected Validation Data



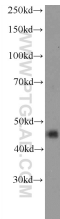
Immunohistochemical of paraffin-embedded human hepatocirrhosis using 20101-1-AP(ACR10 antibody) at dilution of 1:100 (under 10x lens)



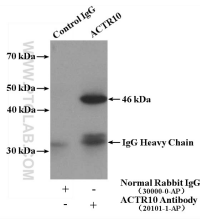
Immunohistochemical of paraffin-embedded human hepatocirrhosis using 20101-1-AP(ACR10 antibody) at dilution of 1:100 (under 40x lens)



Immunofluorescent analysis of HepG2 cells, using ACR10 antibody 20101-1-AP at 1:25 dilution and Rhodamine-labeled goat anti-rabbit IgG (red).



mouse brain tissue were subjected to SDS PAGE followed by western blot with 20101-1-AP(ACR10 Antibody) at dilution of 1:600 incubated at room temperature for 1.5 hours



IP Result of anti-ACR10 (IP:20101-1-AP, 4ug; Detection:20101-1-AP 1:300) with mouse brain tissue lysate 4000ug.