

For Research Use Only

CUEDC2 Polyclonal antibody

Catalog Number: 20123-1-AP



Basic Information

Catalog Number:

20123-1-AP

Size:

150ul, Concentration: 800 ug/ml by Nanodrop and 347 ug/ml by Bradford method using BSA as the standard;

Source:

Rabbit

Isotype:

IgG

Immunogen Catalog Number:

AG13847

GenBank Accession Number:

BC000262

GeneID (NCBI):

79004

UNIPROT ID:

Q9H467

Full Name:

CUE domain containing 2

Calculated MW:

287 aa, 32 kDa

Observed MW:

32 kDa

Purification Method:

Antigen affinity purification

Recommended Dilutions:

WB 1:1000-1:4000

IP 0.5-4.0 ug for 1.0-3.0 mg of total protein lysate

IHC 1:400-1:1600

IF/ICC 1:50-1:500

Applications

Tested Applications:

WB, IHC, IF/ICC, IP, ELISA

Species Specificity:

human, mouse

Note-IHC: suggested antigen retrieval with TE buffer pH 9.0; (*) Alternatively, antigen retrieval may be performed with citrate buffer pH 6.0

Positive Controls:

WB: HepG2 cells, mouse kidney tissue, HeLa cells, human brain tissue, human kidney tissue, Jurkat cells, mouse brain tissue

IP: mouse brain tissue,

IHC: human ovary tumor tissue, human breast cancer tissue, human malignant melanoma tissue

IF/ICC: HeLa cells,

Background Information

CUE domain-containing 2 (CUEDC2) is a ubiquitin-binding motif-containing protein involved in the regulation of the cell cycle, inflammation, and tumorigenesis. It is ubiquitously expressed in human tissues and organs, not only highly expressed in the normal brain, heart and testis, but also some kinds of cancers, such as breast, ovarian and kidney cancers. CUEDC2 could act as an adaptor protein to target I κ B kinase (IKK) for dephosphorylation and inactivation by recruiting protein phosphatase (PP1), and thus repressed activation of the transcription factor NF- κ B. Moreover, CUEDC2, is a key factor in endocrine resistance in breast cancer.

Storage

Storage:

Store at -20°C. Stable for one year after shipment.

Storage Buffer:

PBS with 0.02% sodium azide and 50% glycerol pH 7.3.

Aliquoting is unnecessary for -20°C storage

*** 20ul sizes contain 0.1% BSA

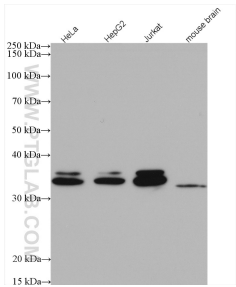
For technical support and original validation data for this product please contact:

T: 1 (888) 4PTGLAB (1-888-478-4522) (toll free in USA), or 1(312) 455-8498 (outside USA)

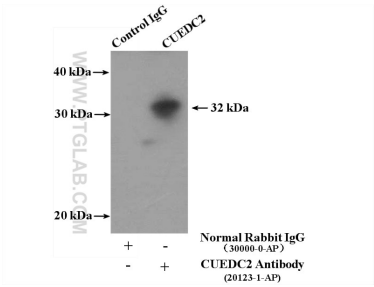
E: proteintech@ptglab.com
W: ptglab.com

This product is exclusively available under Proteintech Group brand and is not available to purchase from any other manufacturer.

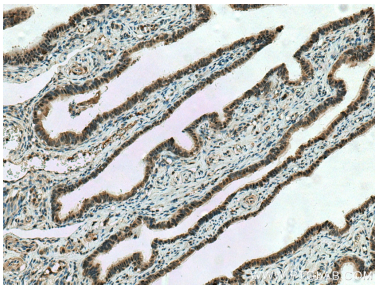
Selected Validation Data



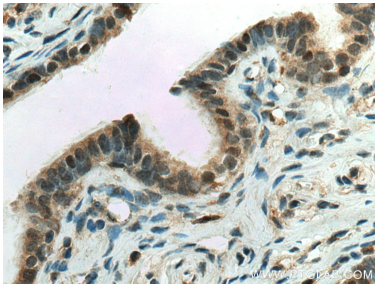
Various lysates were subjected to SDS PAGE followed by western blot with 20123-1-AP (CUEDC2 antibody) at dilution of 1:4000 incubated at room temperature for 1.5 hours.



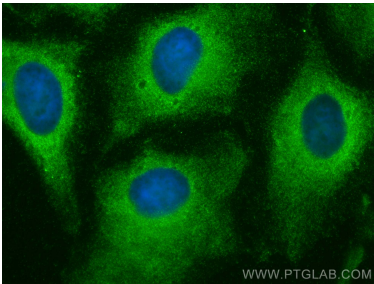
IP result of anti-CUEDC2 (IP:20123-1-AP, 4ug; Detection:20123-1-AP 1:500) with mouse brain tissue lysate 4000ug.



Immunohistochemical analysis of paraffin-embedded human ovary tumor tissue slide using 20123-1-AP (CUEDC2 antibody) at dilution of 1:800 (under 10x lens). Heat mediated antigen retrieval with Tris-EDTA buffer (pH 9.0).



Immunohistochemical analysis of paraffin-embedded human ovary tumor tissue slide using 20123-1-AP (CUEDC2 antibody) at dilution of 1:800 (under 40x lens). Heat mediated antigen retrieval with Tris-EDTA buffer (pH 9.0).



Immunofluorescent analysis of (-20°C Methanol) fixed HeLa cells using CUEDC2 antibody (20123-1-AP) at dilution of 1:200 and CoraLite®488-Conjugated AffiniPure Goat Anti-Rabbit IgG(H+L) (SA00013-2).