

For Research Use Only

SMCR7L/MID51 Polyclonal antibody



Catalog Number: 20164-1-AP

Featured Product

49 Publications

Basic Information

Catalog Number:

20164-1-AP

Size:

150ul, Concentration: 260 µg/ml by Nanodrop and 240 µg/ml by Bradford method using BSA as the standard;

Source:

Rabbit

Isotype:

IgG

Immunogen Catalog Number:

AG13775

GenBank Accession Number:

BC002587

GeneID (NCBI):

54471

Full Name:

Smith-Magenis syndrome chromosome region, candidate 7-like

Calculated MW:

463 aa, 51 kDa

Observed MW:

48-51 kDa

Purification Method:

Antigen affinity purification

Recommended Dilutions:

WB 1:500-1:2000

IP 0.5-4.0 ug for IP and 1:500-1:2000 for WB

Applications

Tested Applications:

IP, WB, ELISA

Cited Applications:

IF, IHC, IP, WB

Species Specificity:

human, mouse, rat

Cited Species:

human, mouse, rat

Positive Controls:

WB: A549 cells, NIH/3T3 cells, RAW264.7, mouse testis tissue, mouse heart tissue, rat liver tissue, HEK-293T cells, HT-1080 cells

IP: RAW 264.7 cells,

Background Information

Human SMCR7L gene encodes, MID51, the mitochondrial dynamic protein of 51 kDa (also called mitochondrial elongation factor 1, MIEF1). MID51 is a single-pass membrane protein anchored to the mitochondrial outer membrane and regulates mitochondrial morphology. Mitochondrial morphology is controlled by two opposing processes: fusion and fission. Elevated MID51 levels induce extensive mitochondrial fusion, whereas depletion of MID51 causes mitochondrial fragmentation. MID51 interacts with and recruits Drp1 to mitochondria, suggesting a critical role of MID51 in regulation of mitochondrial fusion-fission machinery in vertebrates.

Notable Publications

Author	Pubmed ID	Journal	Application
William T King	34529976	J Biol Chem	WB
Di Hu	34489447	Nat Commun	WB
Vivian Delcourt	30181344	Mol Cell Proteomics	WB

Storage

Storage:

Store at -20°C. Stable for one year after shipment.

Storage Buffer:

PBS with 0.02% sodium azide and 50% glycerol pH 7.3.

Aliquoting is unnecessary for -20°C storage

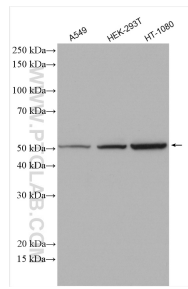
For technical support and original validation data for this product please contact:

T: 1 (888) 4PTGLAB (1-888-478-4522) (toll free in USA), or 1(312) 455-8498 (outside USA)

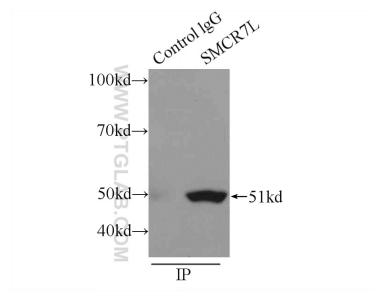
E: proteintech@ptglab.com
W: ptglab.com

This product is exclusively available under Proteintech Group brand and is not available to purchase from any other manufacturer.

Selected Validation Data



Various lysates were subjected to SDS PAGE followed by western blot with 20164-1-AP (SMCR7L/MID51 antibody) at dilution of 1:1000 incubated at room temperature for 1.5 hours.



IP Result of anti-SMCR7L/MID51 (IP:20164-1-AP, 3ug; Detection:20164-1-AP 1:1000) with RAW 264.7 cells lysate 2400ug.