

For Research Use Only

PSAT1 Polyclonal antibody

Catalog Number: 20180-1-AP

Featured Product

10 Publications



Basic Information

Catalog Number:

20180-1-AP

Size:

150ul, Concentration: 240 ug/ml by Nanodrop;

Source:

Rabbit

Isotype:

IgG

Immunogen Catalog Number:

AG14044

GenBank Accession Number:

BC001618

GeneID (NCBI):

29968

UNIPROT ID:

Q9Y617

Full Name:

phosphoserine aminotransferase 1

Calculated MW:

370 aa, 40 kDa

Observed MW:

37-40 kDa

Purification Method:

Antigen affinity purification

Recommended Dilutions:

WB: 1:1000-1:8000

IP: 0.5-4.0 ug for 1.0-3.0 mg of total protein lysate

IHC: 1:50-1:500

IF/ICC: 1:200-1:800

Applications

Tested Applications:

WB, IHC, IF/ICC, IP, ELISA

Cited Applications:

WB, IHC

Species Specificity:

human, mouse, rat

Cited Species:

human, mouse

Positive Controls:

WB : HeLa cells, HEK-293 cells, A549 cells, K-562 cells, mouse brain tissue, rat brain tissue

IP : HeLa cells,

IHC : human lung cancer tissue, human breast cancer tissue

IF/ICC : HepG2 cells,

Note-IHC: suggested antigen retrieval with TE buffer pH 9.0; (*) Alternatively, antigen retrieval may be performed with citrate buffer pH 6.0

Background Information

PSAT1, also named as PSA and PSAT, belongs to the class-V pyridoxal-phosphate-dependent aminotransferase family and SerC subfamily. It catalyzes the reversible conversion of 3-phosphohydroxypyruvate to phosphoserine and of 3-hydroxy-2-oxo-4-phosphonooxybutanoate to phosphohydroxythreonine. PSAT1 represents a new interesting target for CRC therapy. (PMID:18221502) It may be implicated in altered serine metabolism and schizophrenia spectrum conditions. (PMID:20955740)

Notable Publications

Author	Pubmed ID	Journal	Application
Ji Wang	34544857	Proc Natl Acad Sci U S A	WB
Katherine Sellers	31114017	Br J Cancer	WB
Margaret E Torrence	33646118	Elife	WB

Storage

Storage:

Store at -20°C. Stable for one year after shipment.

Storage Buffer:

PBS with 0.02% sodium azide and 50% glycerol, pH7.3

Aliquoting is unnecessary for -20°C storage

*** 20ul sizes contain 0.1% BSA

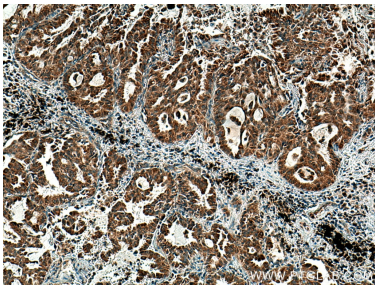
For technical support and original validation data for this product please contact:

T: 1 (888) 4PTGLAB (1-888-478-4522) (toll free in USA), or 1(312) 455-8498 (outside USA)

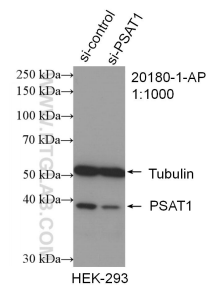
E: proteintech@ptglab.com
W: ptglab.com

This product is exclusively available under Proteintech Group brand and is not available to purchase from any other manufacturer.

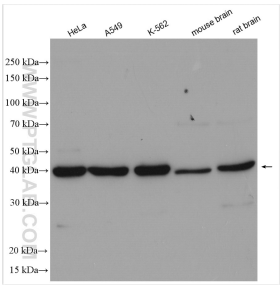
Selected Validation Data



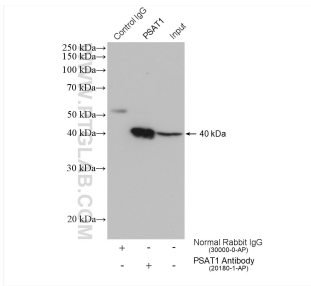
Immunohistochemical analysis of paraffin-embedded human lung cancer tissue slide using 20180-1-AP (PSAT1 antibody) at dilution of 1:200 (under 10x lens). Heat mediated antigen retrieval with Tris-EDTA buffer (pH 9.0).



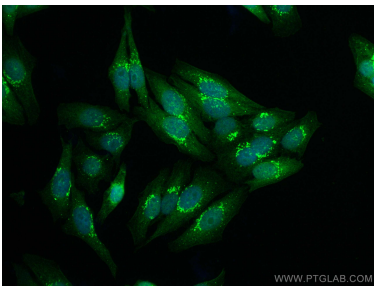
WB result of PSAT1 antibody (20180-1-AP; 1:1000; incubated at room temperature for 1.5 hours) with sh-Control and sh-PSAT1 transfected HEK-293 cells.



Various lysates were subjected to SDS PAGE followed by western blot with 20180-1-AP (PSAT1 antibody) at dilution of 1:4000 incubated at room temperature for 1.5 hours.



IP result of anti-PSAT1 (IP:20180-1-AP, 4ug; Detection:20180-1-AP 1:2000) with HeLa cells lysate 2520 ug.



Immunofluorescent analysis of (4% PFA) fixed HepG2 cells using PSAT1 antibody (20180-1-AP) at dilution of 1:400 and CoraLite®488-Conjugated Goat Anti-Rabbit IgG(H+L).