

For Research Use Only

ROBO1-Specific Polyclonal antibody

Catalog Number: 20219-1-AP

Featured Product

18 Publications



Basic Information

Catalog Number:

20219-1-AP

Size:

150ul, Concentration: 500 ug/ml by Nanodrop and 300 ug/ml by Bradford method using BSA as the standard;

Source:

Rabbit

Isotype:

IgG

GenBank Accession Number:

NM_002941

GeneID (NCBI):

6091

UNIPROT ID:

Q9Y6N7

Full Name:

roundabout, axon guidance receptor, homolog 1 (Drosophila)

Calculated MW:

181 kDa

Observed MW:

200-250 kDa

Purification Method:

Antigen affinity purification

Recommended Dilutions:

WB: 1:2000-1:16000

Applications

Tested Applications:

WB, ELISA

Cited Applications:

WB, IF, IP

Species Specificity:

human, mouse, rat

Cited Species:

human, mouse, rat

Positive Controls:

WB: HepG2 cells, mouse brain tissue, rat brain tissue

Background Information

ROBO1, also named as DUTT1, belongs to the immunoglobulin superfamily and ROBO family. It is a receptor for SLIT1 and SLIT2 which are thought to act as molecular guidance cue in cellular migration, including axonal navigation at the ventral midline of the neural tube and projection of axons to different regions during neuronal development. In axon growth cones, the silencing of the attractive effect of NTN1 by SLIT2 may require the formation of a ROBO1-DCC complex. It may be required for lung development. The antibody is specific to ROBO1.

Notable Publications

| Author | Pubmed ID | Journal | Application |
|-------------------|-----------|----------|-------------|
| Tongtong Jiang | 36250924 | FASEB J | IF |
| Saumya Srivastava | 33196021 | iScience | WB |
| Jialing Chen | 33068960 | Placenta | WB |

Storage

Storage:

Store at -20°C. Stable for one year after shipment.

Storage Buffer:

PBS with 0.02% sodium azide and 50% glycerol, pH7.3

Aliquoting is unnecessary for -20°C storage

*** 20ul sizes contain 0.1% BSA

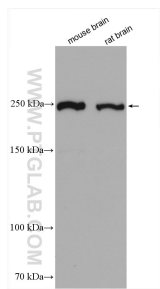
For technical support and original validation data for this product please contact:

T: 1 (888) 4PTGLAB (1-888-478-4522) (toll free in USA), or 1(312) 455-8498 (outside USA)

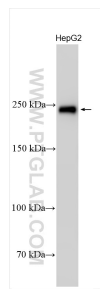
E: proteintech@ptglab.com
W: ptglab.com

This product is exclusively available under Proteintech Group brand and is not available to purchase from any other manufacturer.

Selected Validation Data



Various lysates were subjected to SDS PAGE followed by western blot with 20219-1-AP (ROBO 1-Specific antibody) at dilution of 1:8000 incubated at room temperature for 1.5 hours.



HepG2 cells lysate was subjected to SDS PAGE followed by western blot with 20219-1-AP (ROBO 1-Specific antibody) at dilution of 1:8000 incubated at room temperature for 1.5 hours.