

For Research Use Only

# ROBO3-Specific Polyclonal antibody

Catalog Number: 20220-1-AP

2 Publications



## Basic Information

### Catalog Number:

20220-1-AP

### Size:

150ul, Concentration: 450 ug/ml by Nanodrop;

### Source:

Rabbit

### Isotype:

IgG

### GenBank Accession Number:

NM\_022370

### GeneID (NCBI):

64221

### UNIPROT ID:

Q96MS0

### Full Name:

roundabout, axon guidance receptor, homolog 3 (Drosophila)

### Calculated MW:

148 kDa

### Observed MW:

148 kDa

### Purification Method:

Antigen affinity purification

### Recommended Dilutions:

WB: 1:500-1:1000

IHC: 1:50-1:500

## Applications

### Tested Applications:

WB, IHC, ELISA

### Cited Applications:

WB, IF

### Species Specificity:

human, mouse, rat

### Cited Species:

human, mouse

**Note-IHC: suggested antigen retrieval with TE buffer pH 9.0; (\*) Alternatively, antigen retrieval may be performed with citrate buffer pH 6.0**

### Positive Controls:

**WB**: Neuro-2a cells, mouse brain tissue, rat brain tissue

**IHC**: mouse brain tissue, human brain tissue, human gliomas tissue

## Background Information

ROBO3 belongs to the immunoglobulin superfamily and ROBO family. ROBO3 is thought to be involved during neural development in axonal navigation at the ventral midline of the neural tube. In spinal cord development, it plays a role in guiding commissural axons probably by preventing premature sensitivity to Slit proteins thus inhibiting Slit signaling through ROBO1. It is required for hindbrain axon midline crossing. Defects in ROBO3 are a cause of familial horizontal gaze palsy with progressive scoliosis (HGPPS). Patients show a medulla where motor and sensory projections appear uncrossed. The antibody is specific to ROBO3.

## Notable Publications

Author	Pubmed ID	Journal	Application
Oliva Palander	33872598	J Biol Chem	IF
Ziyue Xu	39675489	Brain Res Bull	WB

## Storage

### Storage:

Store at -20°C. Stable for one year after shipment.

### Storage Buffer:

PBS with 0.02% sodium azide and 50% glycerol, pH7.3

Aliquoting is unnecessary for -20°C storage

\*\*\* 20ul sizes contain 0.1% BSA

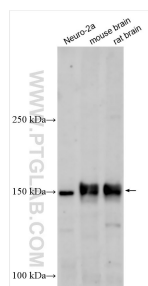
For technical support and original validation data for this product please contact:

T: 1 (888) 4PTGLAB (1-888-478-4522) (toll free in USA), or 1(312) 455-8498 (outside USA)

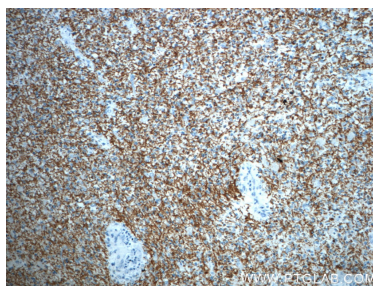
E: [proteintech@ptglab.com](mailto:proteintech@ptglab.com)  
W: [ptglab.com](http://ptglab.com)

This product is exclusively available under Proteintech Group brand and is not available to purchase from any other manufacturer.

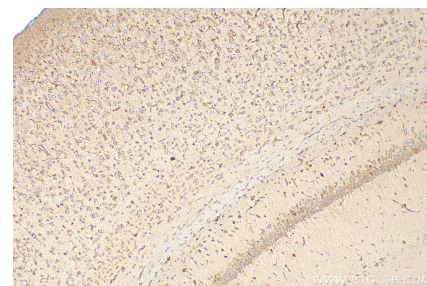
## Selected Validation Data



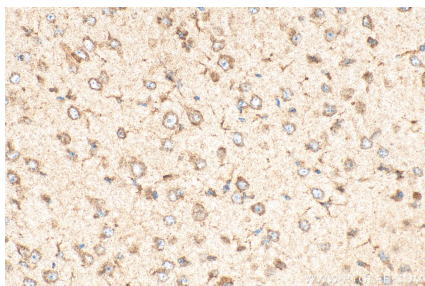
Various lysates were subjected to SDS PAGE followed by western blot with 20220-1-AP (ROBO3-Specific antibody) at dilution of 1:500 incubated at room temperature for 1.5 hours.



Immunohistochemical analysis of paraffin-embedded human gliomas slide using 20220-1-AP (ROBO3-Specific Antibody) at dilution of 1:50.



Immunohistochemical analysis of paraffin-embedded mouse brain tissue slide using 20220-1-AP (ROBO3-Specific antibody) at dilution of 1:200 (under 10x lens). Heat mediated antigen retrieval with Tris-EDTA buffer (pH 9.0).



Immunohistochemical analysis of paraffin-embedded mouse brain tissue slide using 20220-1-AP (ROBO3-Specific antibody) at dilution of 1:200 (under 40x lens). Heat mediated antigen retrieval with Tris-EDTA buffer (pH 9.0).