

For Research Use Only

ARF6-Specific Polyclonal antibody



Catalog Number: 20225-1-AP

6 Publications

Basic Information

Catalog Number: 20225-1-AP	GenBank Accession Number: NM_001663	Purification Method: Antigen affinity purification
Size: 150ul , Concentration: 700 µg/ml by Nanodrop and 400 µg/ml by Bradford method using BSA as the standard;	GeneID (NCBI): 382	Recommended Dilutions: WB 1:200-1:600 IHC 1:50-1:500 IF 1:50-1:100
Source: Rabbit	Full Name: ADP-ribosylation factor 6	
Isotype: IgG	Calculated MW: 20 kDa	
	Observed MW: 20 kDa	

Applications

Tested Applications:

IF, IHC, WB, ELISA

Cited Applications:

IF, WB

Species Specificity:

human, mouse

Cited Species:

human, mouse

Note-IHC: suggested antigen retrieval with TE buffer pH 9.0; (*) Alternatively, antigen retrieval may be performed with citrate buffer pH 6.0

Positive Controls:

WB: HepG2 cells, mouse liver tissue, MCF-7 cells, A549 cells, human liver tissue

IHC: human liver cancer tissue, human colon tissue, human heart tissue, human kidney tissue

IF: HeLa,

Background Information

ADP-ribosylation factors (ARFs) are members of the ARF family of GTP-binding proteins of the Ras superfamily, with 20kda protein size. ARFs bind and regulate GTP/GDP cycle by alternating between the active GTP-bound and inactive GDP-bound conformations. ARF family proteins are essential and ubiquitous in eukaryotes. Six highly conserved members of the family have been identified in mammalian cells. They function in vesicular traffic and actin remodelling and other bioprocesses in cells. The ARF6 is one of best identified ARFs It is present at the plasma membrane and to some extent on endosomal membranes where it regulates the flow of trafficking into and out of the cell and the actin cytoskeleton. The antibody is specific to ARF6.

Notable Publications

Author	Pubmed ID	Journal	Application
Ernes Candiello	29150658	Sci Rep	
James W Clancy	31235936	Nat Cell Biol	IF
Masao Takeuchi	33606708	PLoS One	IF

Storage

Storage:

Store at -20°C. Stable for one year after shipment.

Storage Buffer:

PBS with 0.02% sodium azide and 50% glycerol pH 7.3.

Aliquoting is unnecessary for -20°C storage

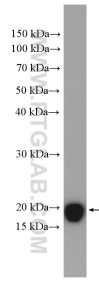
For technical support and original validation data for this product please contact:

T: 1 (888) 4PTGLAB (1-888-478-4522) (toll free in USA), or 1(312) 455-8498 (outside USA)

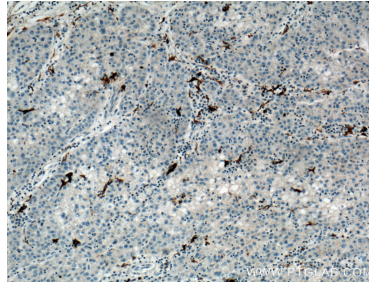
E: proteintech@ptglab.com
W: ptglab.com

This product is exclusively available under Proteintech Group brand and is not available to purchase from any other manufacturer.

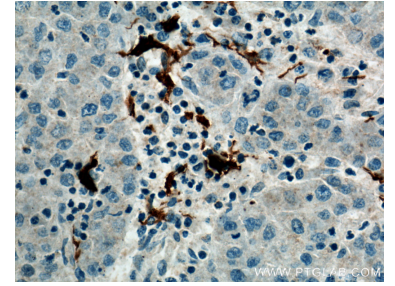
Selected Validation Data



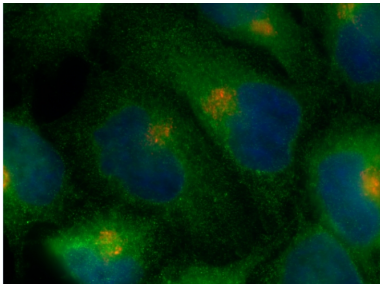
HepG2 cells were subjected to SDS PAGE followed by western blot with 20225-1-AP (ARF6-Specific antibody) at dilution of 1:300 incubated at room temperature for 1.5 hours.



Immunohistochemical analysis of paraffin-embedded human liver cancer tissue slide using 20225-1-AP (ARF6-Specific Antibody) at dilution of 1:200 (under 10x lens). Heat mediated antigen retrieval with Tris-EDTA buffer (pH 9.0).



Immunohistochemical analysis of paraffin-embedded human liver cancer tissue slide using 20225-1-AP (ARF6-Specific Antibody) at dilution of 1:200 (under 40x lens). Heat mediated antigen retrieval with Tris-EDTA buffer (pH 9.0).



IF result of ARF6 antibody (20225-1-AP, 1:100) with PFA fixed HeLa cells. Green: ARF6 antibody stains PM and recycling endosomes. Red: Golgi stain.