

For Research Use Only

# RAB11A-Specific Polyclonal antibody



Catalog Number: 20229-1-AP

Featured Product

11 Publications

## Basic Information

### Catalog Number:

20229-1-AP

### Size:

150ul, Concentration: 300 µg/ml by Nanodrop and 253 µg/ml by Bradford method using BSA as the standard;

### Source:

Rabbit

### Isotype:

IgG

### GenBank Accession Number:

NM\_004663

### GeneID (NCBI):

8766

### Full Name:

RAB11A, member RAS oncogene family

### Calculated MW:

24 kDa

### Observed MW:

24 kDa

### Purification Method:

Antigen affinity purification

### Recommended Dilutions:

WB 1:500-1:1000

IP 0.5-4.0 ug for IP and 1:500-1:1000 for WB

IHC 1:50-1:500

IF 1:50-1:500

## Applications

### Tested Applications:

IF, IHC, IP, WB, ELISA

### Cited Applications:

IF, IHC, WB

### Species Specificity:

human, mouse, rat

### Cited Species:

canine, human, mouse, rat

### Positive Controls:

WB: HEK-293T cells, HeLa cells, human brain tissue, mouse colon tissue, PC-12 cells, rat brain tissue, SH-SY5Y cells

IP: SH-SY5Y cells,

IHC: human small intestine tissue,

IF: HeLa cells, IMCD3 cells

**Note-IHC: suggested antigen retrieval with TE buffer pH 9.0; (\*) Alternatively, antigen retrieval may be performed with citrate buffer pH 6.0**

## Background Information

Rab11a, Rab11b and Rab25 comprise a subfamily of Rab proteins that belong to the Ras-related small GTPase protein superfamily (PMID: 8074219, PMID: 10708602). Rab11 proteins are involved in endocytosis and plasma membrane recycling in non-polarized and polarized cells (PMID: 8638719, PMID: 8922376). Rab11a and Rab11b are ubiquitously expressed in most tissues, while Rab25 is only expressed in epithelial cells. Rab11a is known to regulate the recycling of internalized cell surface proteins and receptors from the early endosome through the trans-Golgi network (PMID: 11121436, PMID: 9600939). The antibody is specific to RAB11A, and has no cross reaction to RAB11B.

## Notable Publications

Author	Pubmed ID	Journal	Application
Ketaki Ganti	34473799	PLoS Pathog	IF
Hiroshi Gomi	28914590	J Histochem Cytochem	WB,IHC
Oliva Palander	33124112	FASEB J	IF

## Storage

### Storage:

Store at -20°C. Stable for one year after shipment.

### Storage Buffer:

PBS with 0.02% sodium azide and 50% glycerol pH 7.3.

Aliquoting is unnecessary for -20°C storage

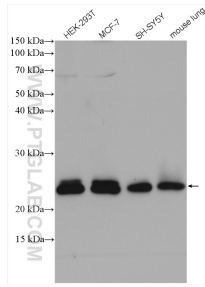
For technical support and original validation data for this product please contact:

T: 1 (888) 4PTGLAB (1-888-478-4522) (toll free in USA), or 1(312) 455-8498 (outside USA)

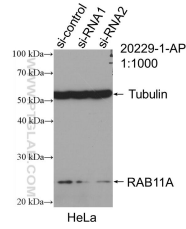
E: proteintech@ptglab.com  
W: ptglab.com

This product is exclusively available under Proteintech Group brand and is not available to purchase from any other manufacturer.

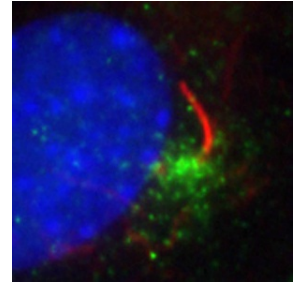
## Selected Validation Data



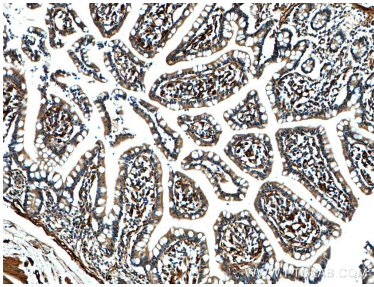
Various lysates were subjected to SDS PAGE followed by western blot with 20229-1-AP (RAB11A-Specific antibody) at dilution of 1:600 incubated at room temperature for 1.5 hours.



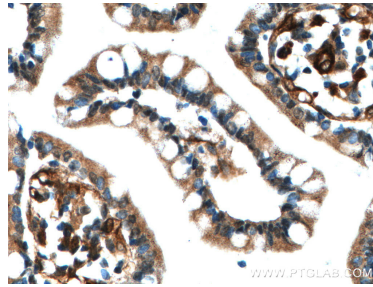
WB result of RAB11A-Specific antibody (20229-1-AP; 1:1000; incubated at room temperature for 1.5 hours) with sh-Control and sh-RAB11A-Specific transfected HeLa cells.



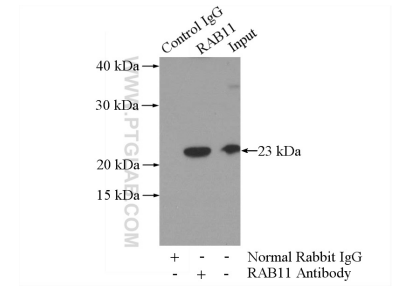
IF result of 20229-1-AP (anti-RAB11A-Specific, Green) in ciliated IMCD3 cells by Dr. Seongjin Seo. (Red is the primary cilium, and blue is the nucleus).



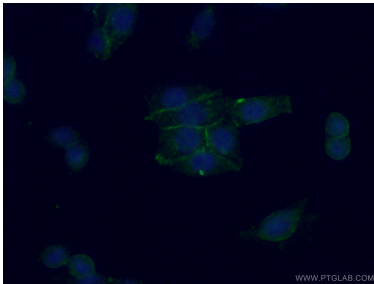
Immunohistochemical analysis of paraffin-embedded human small intestine tissue slide using 20229-1-AP (RAB11A-Specific antibody) at dilution of 1:200 (under 10x lens).



Immunohistochemical analysis of paraffin-embedded human small intestine tissue slide using 20229-1-AP (RAB11A-Specific antibody) at dilution of 1:200 (under 40x lens).



IP Result of anti-RAB11A-Specific (IP:20229-1-AP, 3ug; Detection:20229-1-AP 1:700) with SH-SY5Y cells lysate 3000ug.



Immunofluorescent analysis of (-20°C Ethanol) fixed HeLa cells using 20229-1-AP (RAB11A-Specific antibody) at dilution of 1:50 and Alexa Fluor 488-Conjugated AffiniPure Goat Anti-Rabbit IgG(H+L).