

For Research Use Only

# ITGA6X1A Polyclonal antibody

Catalog Number: 20231-1-AP



## Basic Information

<b>Catalog Number:</b> 20231-1-AP	<b>GenBank Accession Number:</b> NM_000210	<b>Purification Method:</b> Antigen affinity purification
<b>Size:</b> 150ul , Concentration: 173 µg/ml by Bradford method using BSA as the standard;	<b>GeneID (NCBI):</b> 3655	<b>Recommended Dilutions:</b> WB 1:200-1:1000
<b>Source:</b> Rabbit	<b>Full Name:</b> integrin, alpha 6	
<b>Isotype:</b> IgG	<b>Calculated MW:</b> 127 kDa	
	<b>Observed MW:</b> 100 kDa, 150 kDa	

## Applications

<b>Tested Applications:</b> WB,ELISA	<b>Positive Controls:</b> WB : mouse spleen tissue, mouse colon tissue
<b>Species Specificity:</b> human, mouse	

## Background Information

ITGA6, also named as CD49f and VLA-6, belongs to the integrin alpha chain family. It is a receptor for laminin on platelets. ITGA6 is a receptor for laminin in epithelial cells and it plays a critical structural role in the hemidesmosome. Defects in ITGA6 are a cause of epidermolysis bullosa letalis with pyloric atresia (EB-PA) which also known as junctional epidermolysis bullosa with pyloric atresia (PA-JEB) or aplasia cutis congenita with gastrointestinal atresia. The antibody is specific to isoform Alpha-6X1A, isoform Alpha-6X2A, isoform Alpha-6X1X2A isoform7 and isoform9 of ITGA6.

## Storage

**Storage:**  
Store at -20°C. Stable for one year after shipment.  
**Storage Buffer:**  
PBS with 0.02% sodium azide and 50% glycerol pH 7.3.  
Aliquoting is unnecessary for -20°C storage

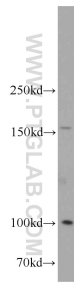
For technical support and original validation data for this product please contact:

T: 1 (888) 4PTGLAB (1-888-478-4522) (toll free in USA), or 1(312) 455-8498 (outside USA)

E: [proteintech@ptglab.com](mailto:proteintech@ptglab.com)  
W: [ptglab.com](http://ptglab.com)

This product is exclusively available under Proteintech Group brand and is not available to purchase from any other manufacturer.

## Selected Validation Data



mouse spleen tissue were subjected to SDS PAGE followed by western blot with 20231-1-AP (ITGA6-Specific antibody) at dilution of 1:300 incubated at room temperature for 1.5 hours.