

For Research Use Only

Asprosin Polyclonal antibody

Catalog Number: 20251-1-AP



Basic Information

Catalog Number: 20251-1-AP	GenBank Accession Number: NM_000138	Purification Method: Antigen affinity purification
Size: 150ul , Concentration: 300 ug/ml by Nanodrop and 240 ug/ml by Bradford method using BSA as the standard;	GeneID (NCBI): 2200	Recommended Dilutions: WB: 1:200-1:1000 IHC: 1:20-1:200
Source: Rabbit	UNIPROT ID: P35555	
Isotype: IgG	Full Name: fibrillin 1	
	Calculated MW: 30 kDa	
	Observed MW: 32 kDa	

Applications

Tested Applications: WB, IHC, ELISA	Positive Controls: WB : A172 cells, mouse placenta IHC : human ovary tissue,
Species Specificity: human, mouse	
Note-IHC: suggested antigen retrieval with TE buffer pH 9.0; (*) Alternatively, antigen retrieval may be performed with citrate buffer pH 6.0	

Background Information

Asprosin is a hormone derived from fibrillin-1 that plays a role in regulating glucose metabolism and appetite. It's released by adipose tissue during fasting and stimulates the liver to release glucose into the bloodstream, ensuring energy availability. Asprosin also influences appetite and body weight by acting on neurons in the hypothalamus. It has been linked to various metabolic diseases, including obesity, type 2 diabetes, and polycystic ovary syndrome (PCOS). The detected molecular size is consistent with that in the article PMID: 35079041.

Storage

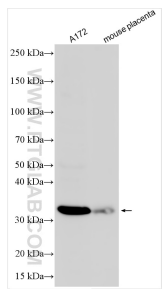
Storage:
Store at -20°C. Stable for one year after shipment.
Storage Buffer:
PBS with 0.02% sodium azide and 50% glycerol, pH7.3
Aliquoting is unnecessary for -20°C storage

*** 20ul sizes contain 0.1% BSA

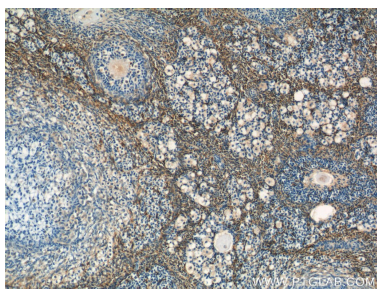
For technical support and original validation data for this product please contact:
T: 1 (888) 4PTGLAB (1-888-478-4522) (toll free in USA), or 1(312) 455-8498 (outside USA)
E: proteintech@ptglab.com
W: ptglab.com

This product is exclusively available under Proteintech Group brand and is not available to purchase from any other manufacturer.

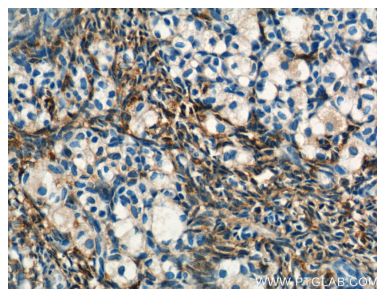
Selected Validation Data



Various lysates were subjected to SDS PAGE followed by western blot with 20251-1-AP (Asprosin antibody) at dilution of 1:300 incubated at room temperature for 1.5 hours.



Immunohistochemical analysis of paraffin-embedded human ovary tissue slide using 20251-1-AP (FBN1-Specific Antibody) at dilution of 1:50 (under 10x lens).



Immunohistochemical analysis of paraffin-embedded human ovary tissue slide using 20251-1-AP (FBN1-Specific Antibody) at dilution of 1:50 (under 40x lens).