

For Research Use Only

fibrillin 2-Specific Polyclonal ANTIBODY



Catalog Number: 20252-1-AP

Basic Information

Catalog Number: 20252-1-AP	GenBank Accession Number: NM_001999	Purification Method: Antigen affinity purification
Size: 150UL, Concentration: 233 µg/ml by Bradford method using BSA as the standard;	GeneID (NCBI): 2201	Recommended Dilutions: WB 1:500-1:2000 IHC 1:50-1:500
Source: Rabbit	Full Name: fibrillin 2	
Isotype: IgG	Calculated MW: 315 kDa	
	Observed MW: 290 kDa, 160 kDa	

Applications

Tested Applications:
IHC, WB, ELISA

Species Specificity:
human, mouse, rat

**Note-IHC: suggested antigen retrieval with
TE buffer pH 9.0; (*) Alternatively, antigen
retrieval may be performed with citrate
buffer pH 6.0**

Positive Controls:

WB: human brain tissue, HepG2 cells, L02 cells, mouse
Lung tissue

IHC: human placenta tissue,

Background Information

FBN2 belongs to the fibrillin family. Fibrillins are structural components of 10-12 nm extracellular calcium-binding microfibrils which occur either in association with elastin or in elastin-free bundles. Fibrillin-2-containing microfibrils regulate the early process of elastic fiber assembly. Defects in FBN2 are the cause of congenital contractural arachnodactyly (CCA) which also known as Beals syndrome or distal arthrogyposis type 9 (DA9). This antibody is specific to FBN2. It recognizes both two isoforms ~300 kDa and 160 kDa.

Storage

Storage:

Store at -20°C. Stable for one year after shipment.

Storage Buffer:

PBS with 0.1% sodium azide and 50% glycerol pH 7.3.

Aliquoting is unnecessary for -20°C storage

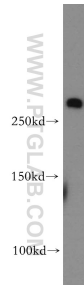
For technical support and original validation data for this product please contact:

T: 1 (888) 4PTGLAB (1-888-478-4522) (toll free
in USA), or 1(312) 455-8498 (outside USA)

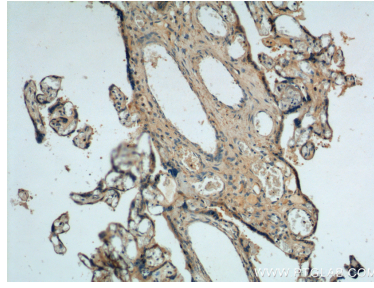
E: proteintech@ptglab.com
W: ptglab.com

**This product is exclusively available under Proteintech
Group brand and is not available to purchase from any
other manufacturer.**

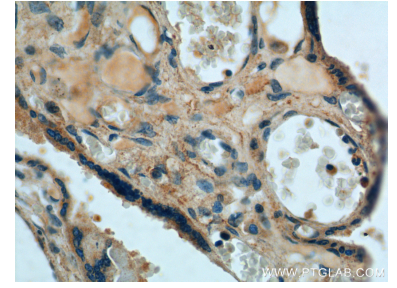
Selected Validation Data



human brain tissue were subjected to SDS PAGE followed by western blot with 20252-1-AP (fibrillin 2-Specific antibody) at dilution of 1:500 incubated at room temperature for 1.5 hours.



Immunohistochemical analysis of paraffin-embedded human placenta tissue slide using 20252-1-AP (fibrillin 2-Specific antibody) at dilution of 1:100 (under 10x lens).



Immunohistochemical analysis of paraffin-embedded human placenta tissue slide using 20252-1-AP (fibrillin 2-Specific antibody) at dilution of 1:100 (under 40x lens).