

For Research Use Only

IGF2R-Specific Polyclonal antibody

Catalog Number: 20253-1-AP

Featured Product

22 Publications



Basic Information

Catalog Number:

20253-1-AP

Size:

150ul, Concentration: 700 ug/ml by Nanodrop;

Source:

Rabbit

Isotype:

IgG

GenBank Accession Number:

NM_000876

GeneID (NCBI):

3482

UNIPROT ID:

P11717

Full Name:

insulin-like growth factor 2 receptor

Calculated MW:

274 kDa

Observed MW:

300 kDa

Purification Method:

Antigen affinity purification

Recommended Dilutions:

WB: 1:5000-1:50000

IP: 0.5-4.0 ug for 1.0-3.0 mg of total protein lysate

IHC: 1:500-1:2000

IF/ICC: 1:200-1:800

FC (Intra): 0.25 ug per 10⁶ cells in a 100 µl suspension

Applications

Tested Applications:

WB, IHC, IF/ICC, FC (Intra), IP, ELISA

Cited Applications:

WB, IHC, IF

Species Specificity:

human, mouse

Cited Species:

human, mouse, rat, bovine

Positive Controls:

WB: HepG2 cells, A431 cells, L02 cells

IP: HepG2 cells,

IHC: mouse colon tissue, human liver tissue, human liver cancer tissue

IF/ICC: HepG2 cells,

FC (Intra): HepG2 cells,

Note-IHC: suggested antigen retrieval with TE buffer pH 9.0; (*) Alternatively, antigen retrieval may be performed with citrate buffer pH 6.0

Background Information

IGF2R, also named as MPRI, CI Man-6-P receptor, CI-MPR, M6PR, IGF-II receptor, M6P/IGF2R, MPR 300 and CD222, belongs to the MRL1/IGF2R family. IGF2R transports of phosphorylated lysosomal enzymes from the Golgi complex and the cell surface to lysosomes. IGF2R is a lysosomal enzymes bearing phosphomannosyl residues bind specifically to mannose-6-phosphate receptors in the Golgi apparatus and the resulting receptor-ligand complex is transported to an acidic prelysosomal compartment where the low pH mediates the dissociation of the complex. This receptor also binds IGF2. IGF2R acts as a positive regulator of T-cell coactivation, by binding DPP4. The antibody is specific to IGF2R.

Notable Publications

Author	Pubmed ID	Journal	Application
Weichao Zhang	36096887	Nat Commun	WB
Ya Hui	36302455	Metabolism	WB,IF
Bing Liu	36299463	Front Endocrinol (Lausanne)	IHC

Storage

Storage:

Store at -20°C. Stable for one year after shipment.

Storage Buffer:

PBS with 0.02% sodium azide and 50% glycerol, pH7.3

Aliquoting is unnecessary for -20°C storage

*** 20ul sizes contain 0.1% BSA

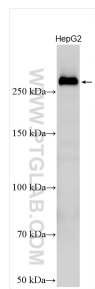
For technical support and original validation data for this product please contact:

T: 1 (888) 4PTGLAB (1-888-478-4522) (toll free in USA), or 1(312) 455-8498 (outside USA)

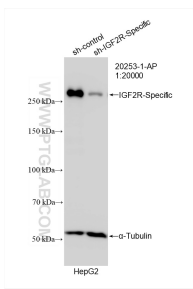
E: proteintech@ptglab.com
W: ptglab.com

This product is exclusively available under Proteintech Group brand and is not available to purchase from any other manufacturer.

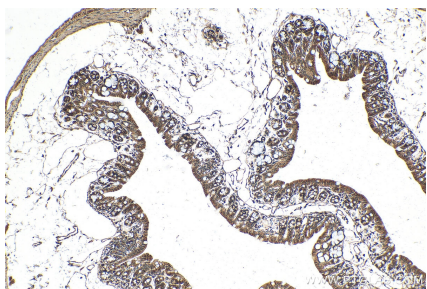
Selected Validation Data



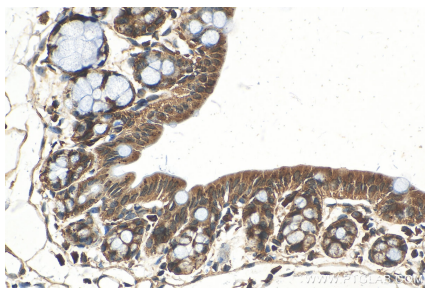
HepG2 cells lysates were subjected to SDS PAGE followed by western blot with 20253-1-AP (IGF2R-Specific antibody) at dilution of 1:30000 incubated at room temperature for 1.5 hours.



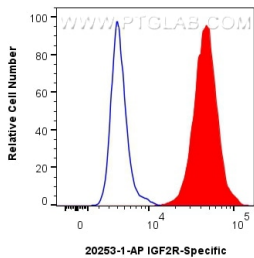
WB result of IGF2R-Specific antibody (20253-1-AP; 1:20000; incubated at room temperature for 1.5 hours) with sh-Control and sh-IGF2R-Specific transfected HepG2 cells.



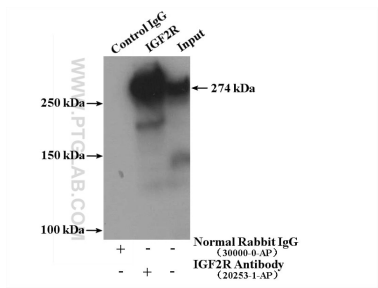
Immunohistochemical analysis of paraffin-embedded mouse colon tissue slide using 20253-1-AP (IGF2R-Specific antibody) at dilution of 1:1000 (under 10x lens). Heat mediated antigen retrieval with Tris-EDTA buffer (pH 9.0).



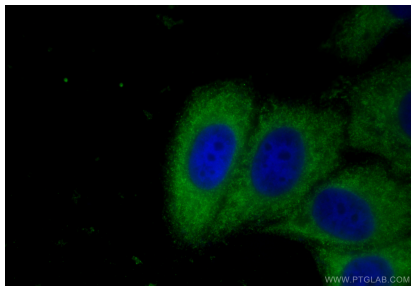
Immunohistochemical analysis of paraffin-embedded mouse colon tissue slide using 20253-1-AP (IGF2R-Specific antibody) at dilution of 1:1000 (under 40x lens). Heat mediated antigen retrieval with Tris-EDTA buffer (pH 9.0).



1x10⁶ HepG2 cells were intracellularly stained with 0.25 ug IGF2R-Specific Polyclonal antibody (20253-1-AP) and CoraLite®488-Conjugated Goat Anti-Rabbit IgG(H+L) (SA00013-2)(red), or 0.25 ug Rabbit IgG control Rabbit PolyAb (30000-O-AP) (blue). Cells were fixed with 4% PFA and permeabilized with Flow Cytometry Perm Buffer (PF00011-C).



IP result of anti-IGF2R-Specific (IP:20253-1-AP, 4ug; Detection:20253-1-AP 1:500) with HepG2 cells lysate 3480ug.



Immunofluorescent analysis of (-20°C Ethanol) fixed HepG2 cells using IGF2R-Specific antibody (20253-1-AP) at dilution of 1:400 and Multi-rAb CoraLite® Plus 488-Goat Anti-Rabbit Recombinant Secondary Antibody (H+L) (RGAR002).