

For Research Use Only

ADAM17-Specific Polyclonal ANTIBODY



Catalog Number: 20259-1-AP

Basic Information

Catalog Number:
20259-1-AP

Size:
34 µg/150 µl

Source:
Rabbit

Isotype:
IgG

Purification Method:
Antigen affinity purification

Immunogen Catalog Number:

GenBank Accession Number:
NM_003183

GeneID (NCBI):
6868

Full Name:
ADAM metallopeptidase domain 17

Calculated MW:
93 kDa

Observed MW:
29 kDa

Recommended Dilutions:

WB 1:500-1:1000

IHC 1:20-1:200

Applications

Tested Applications:
IHC, WB, ELISA

Species Specificity:
human

Note: suggested antigen retrieval with TE buffer pH 9.0; (*) Alternatively, antigen retrieval may be performed with citrate buffer pH 6.0

Positive Controls:

WB : human placenta tissue;

IHC : human pancreas cancer tissue;

Background Information

The ADAMs (A Disintegrin And Metalloprotease) are multidomain transmembrane proteins. One of the first ADAMs implicated in membrane shedding is ADAM-17, which is shown to release the active form of tumor necrosis factor (TNF)-α from its precursor (PMD:18238782). ADAM17 is also named as CSVF, TACE. The full length protein has 9 glycosylation sites, a signal peptide, propeptide and 2 isoforms produced by alternative splicing. The 120-kDa form of ADAM-17 is expressed more frequently and at higher levels in primary breast carcinomas compared with normal breast tissue (PMD:17438092). This antibody is specific to ADAM17.

Notable Publications

Author	Pubmed ID	Journal	Application
Wei Li	30569104	Int J Mbl Med	WB, IHC

Storage

Storage:

Store at -20°C. Stable for one year after shipment.

Storage Buffer:

PBS with 0.02% sodium azide and 50% glycerol pH 7.3.

Aliquoting is unnecessary for -20°C storage

For technical support and original validation data for this product please contact:

T: 1 (888) 4PTGLAB (1-888-478-4522) (toll free in USA), or 1(312) 455-8498 (outside USA)

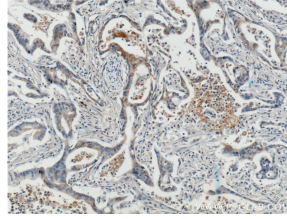
E: proteintech@ptglab.com
W: ptglab.com

This product is exclusively available under Proteintech Group brand and is not available to purchase from any other manufacturer.

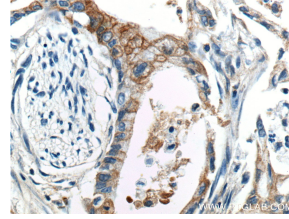
Selected Validation Data



human placenta tissue were subjected to SDS PAGE followed by western blot with 20259-1-AP(ADAM17-Specific antibody) at dilution of 1:500 incubated at room temperature for 1.5 hours



Immunohistochemistry of paraffin-embedded human pancreas cancer tissue slide using 20259-1-AP(ADAM17-Specific Antibody) at dilution of 1:200 (under 10x lens).



Immunohistochemistry of paraffin-embedded human pancreas cancer tissue slide using 20259-1-AP(ADAM17-Specific Antibody) at dilution of 1:200 (under 40x lens).