

For Research Use Only

PPP1R11-Specific Polyclonal antibody



Catalog Number: 20263-1-AP

1 Publications

Basic Information

Catalog Number:

20263-1-AP

Size:

150ul , Concentration: 133 µg/ml by Nanodrop and 133 µg/ml by Bradford method using BSA as the standard;

Source:

Rabbit

Isotype:

IgG

GenBank Accession Number:

NM_021959

GeneID (NCBI):

6992

Full Name:

protein phosphatase 1, regulatory (inhibitor) subunit 11

Calculated MW:

14 kDa

Observed MW:

25-30 kDa

Purification Method:

Antigen affinity purification

Recommended Dilutions:

WB 1:200-1:1000

Applications

Tested Applications:

WB, ELISA

Cited Applications:

WB

Species Specificity:

human, mouse

Cited Species:

pig

Positive Controls:

WB : HeLa cells, A431 cells, mouse liver tissue

Background Information

PPP1R11, also named as HCGV and TCTE5, is an inhibitor of protein phosphatase 1. The antibody is specific to PPP1R11.

Notable Publications

Author	Pubmed ID	Journal	Application
Guisheng Liu	31014175	Cell Cycle	WB

Storage

Storage:

Store at -20°C. Stable for one year after shipment.

Storage Buffer:

PBS with 0.02% sodium azide and 50% glycerol pH 7.3.

Aliquoting is unnecessary for -20°C storage

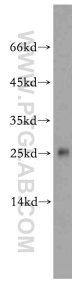
For technical support and original validation data for this product please contact:

T: 1 (888) 4PTGLAB (1-888-478-4522) (toll free in USA), or 1(312) 455-8498 (outside USA)

E: proteintech@ptglab.com
W: ptglab.com

This product is exclusively available under Proteintech Group brand and is not available to purchase from any other manufacturer.

Selected Validation Data



HeLa cells were subjected to SDS PAGE followed by western blot with 20263-1-AP (PPP1R11-Specific antibody) at dilution of 1:100 incubated at room temperature for 1.5 hours.