

For Research Use Only

SERINC2-Specific Polyclonal antibody



Catalog Number: 20266-1-AP

Basic Information

Catalog Number: 20266-1-AP	GenBank Accession Number: NM_178865	Purification Method: Antigen affinity purification
Size: 150ul , Concentration: 133 µg/ml by Nanodrop and 133 µg/ml by Bradford method using BSA as the standard;	GeneID (NCBI): 347735	Recommended Dilutions: WB 1:500-1:1000
Source: Rabbit	Full Name: serine incorporator 2	
Isotype: IgG	Calculated MW: 51 kDa	
	Observed MW: 65 kDa	

Applications

Tested Applications: WB, ELISA	Positive Controls: WB : HepG2 cells, HeLa cells, MCF-7 cells
Species Specificity: human, mouse, rat	

Background Information

SERINC2, also named as TDE2L, belongs to the TDE1 family. SERINC2 contains 11 transmembrane domains, similar to amino acid transporters. The antibody is specific to SERINC2.

Storage

Storage:
Store at -20°C. Stable for one year after shipment.
Storage Buffer:
PBS with 0.02% sodium azide and 50% glycerol pH 7.3.
Aliquoting is unnecessary for -20°C storage

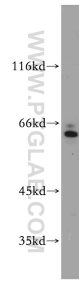
For technical support and original validation data for this product please contact:

T: 1 (888) 4PTGLAB (1-888-478-4522) (toll free in USA), or 1(312) 455-8498 (outside USA)

E: proteintech@ptglab.com
W: ptglab.com

This product is exclusively available under Proteintech Group brand and is not available to purchase from any other manufacturer.

Selected Validation Data



HepG2 cells were subjected to SDS PAGE followed by western blot with 20266-1-AP (SERINC2-Specific antibody) at dilution of 1:100 incubated at room temperature for 1.5 hours.