

For Research Use Only

LTBR Polyclonal antibody

Catalog Number: 20331-1-AP

Featured Product

9 Publications



Basic Information

Catalog Number:

20331-1-AP

Size:

150ul, Concentration: 800 ug/ml by Nanodrop;

Source:

Rabbit

Isotype:

IgG

Immunogen Catalog Number:

AG14065

GenBank Accession Number:

BC026262

GeneID (NCBI):

4055

UNIPROT ID:

P36941

Full Name:

Lymphotoxin beta receptor (TNFR superfamily, member 3)

Calculated MW:

435 aa, 47 kDa

Observed MW:

47-60 kDa

Purification Method:

Antigen affinity purification

Recommended Dilutions:

WB: 1:1000-1:5000

IHC: 1:20-1:200

IF/ICC: 1:50-1:500

FC (Intra): 0.40 ug per 10⁶ cells in a 100 µl suspension

Applications

Tested Applications:

WB, IHC, IF/ICC, FC (Intra), ELISA

Cited Applications:

WB, IHC, IF

Species Specificity:

human, mouse

Cited Species:

human, mouse

Note-IHC: suggested antigen retrieval with TE buffer pH 9.0; (*) Alternatively, antigen retrieval may be performed with citrate buffer pH 6.0

Positive Controls:

WB: HeLa cells, mouse brain tissue

IHC: human hepatocirrhosis tissue,

IF/ICC: HeLa cells,

FC (Intra): HeLa cells,

Notable Publications

Author	Pubmed ID	Journal	Application
Xinzhi Li	30613274	Theranostics	IF
Douglas G Osborne	25825439	J Immunol	WB
Mo Shen	28586003	Mol Med Rep	

Storage

Storage:

Store at -20°C. Stable for one year after shipment.

Storage Buffer:

PBS with 0.02% sodium azide and 50% glycerol, pH7.3

Aliquoting is unnecessary for -20°C storage

*** 20ul sizes contain 0.1% BSA

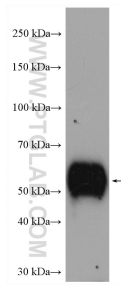
For technical support and original validation data for this product please contact:

T: 1 (888) 4PTGLAB (1-888-478-4522) (toll free in USA), or 1(312) 455-8498 (outside USA)

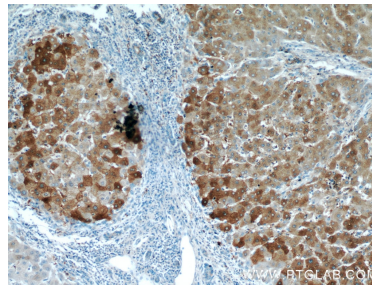
E: proteintech@ptglab.com
W: ptglab.com

This product is exclusively available under Proteintech Group brand and is not available to purchase from any other manufacturer.

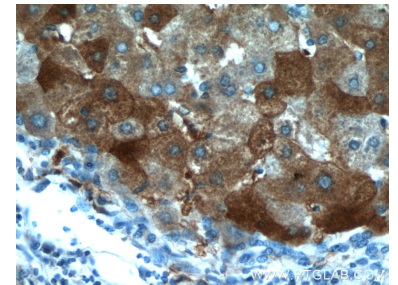
Selected Validation Data



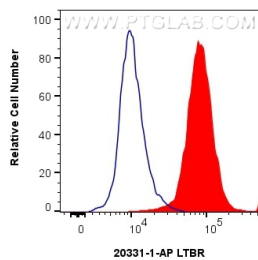
HeLa cells were subjected to SDS PAGE followed by western blot with 20331-1-AP (LTBR antibody) at dilution of 1:5000 incubated at room temperature for 1.5 hours.



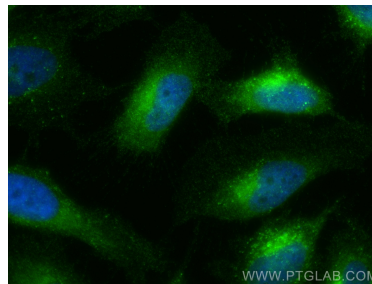
Immunohistochemical analysis of paraffin-embedded human hepatocirrhosis using 20331-1-AP (LTBR antibody) at dilution of 1:50 (under 10x lens).



Immunohistochemical analysis of paraffin-embedded human hepatocirrhosis using 20331-1-AP (LTBR antibody) at dilution of 1:50 (under 40x lens).



1×10^6 HeLa cells were intracellularly stained with 0.4 μ g LTBR Polyclonal antibody (20331-1-AP) and CoraLite®488-Conjugated AffiniPure Goat Anti-Rabbit IgG(H+L) (SA00013-2) (red), or 0.4 μ g Rabbit IgG control Rabbit PolyAb (30000-0-AP) (blue). Cells were fixed with 4% PFA and permeabilized with Flow Cytometry Perm Buffer (PF00011-C).



Immunofluorescent analysis of (4% PFA) fixed HeLa cells using LTBR antibody (20331-1-AP) at dilution of 1:200 and CoraLite®488-Conjugated Goat Anti-Rabbit IgG(H+L) (SA00013-2).