

# APJ

## Polyclonal ANTIBODY

Catalog Number: 20341-1-AP

4 Publications

### Basic Information

Catalog Number:  
20341-1-AP

Size:  
61 µg/150 µl

Source:  
Rabbit

Isotype:  
IgG

Purification Method:  
Antigen affinity purification

Immunogen Catalog Number:  
AG14138

GenBank Accession Number:  
BC032688

GeneID (NCBI):  
187

Full Name:  
apelin receptor

Calculated MW:  
380aa, 43 kDa

Observed MW:  
43 kDa

Recommended Dilutions:

WB 1:500-1:1000

IHC 1:20-1:200

### Applications

Tested Applications:  
FC, IHC, WB, ELISA

Cited Applications:  
IHC, WB

Species Specificity:  
human, mouse

Cited Species:  
human, rat

**Note-IHC: suggested antigen retrieval with TE buffer pH 9.0; (\*) Alternatively, antigen retrieval may be performed with citrate buffer pH 6.0**

Positive Controls:

WB : SH-SY5Y cells;

IHC : human colon tissue;

### Background Information

APJ, also named as APLNR and AGTRL1, belongs to the G-protein coupled receptor 1 family. It is a receptor for apelin coupled to G proteins that inhibit adenylate cyclase activity. APJ is an alternative coreceptor with CD4 for HIV-1 infection. It may be involved in the development of AIDS dementia. APJ is expressed abundantly in the corpus callosum and spinal cord.

### Notable Publications

Author	Pubmed ID	Journal	Application
Zhao-Shun Yuan	26142632	Amino Acids	WB, IHC
Zhi-Yong Xiao	29432881	Neuroscience	WB
Ting-Ting Dai	30170158	Neuroscience	WB

### Storage

Storage:

Store at -20°C. Stable for one year after shipment.

Storage Buffer:

PBS with 0.1% sodium azide and 50% glycerol pH 7.3.

Aliquoting is unnecessary for -20°C storage

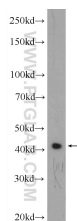
For technical support and original validation data for this product please contact:

T: 1 (888) 4PTGLAB (1-888-478-4522) (toll free in USA), or 1(312) 455-8498 (outside USA)

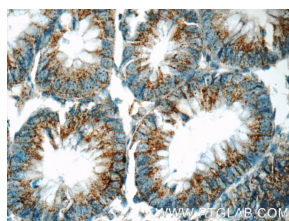
E: proteintech@ptglab.com  
W: ptglab.com

This product is exclusively available under Proteintech Group brand and is not available to purchase from any other manufacturer.

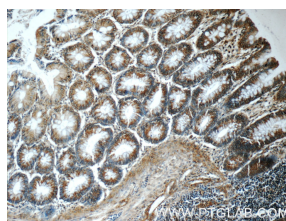
## Selected Validation Data



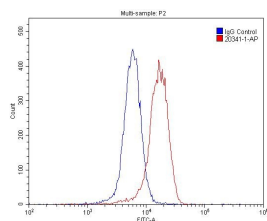
SH-SY5Y cells were subjected to SDS PAGE followed by western blot with 20341-1-APJ (APJ) antibody at dilution of 1:600 incubated at room temperature for 1.5 hours



Immunohistochemical analysis of paraffin-embedded human colon tissue slide using 20341-1-APJ (APJ) antibody at dilution of 1:50 (under 40x lens)



Immunohistochemical analysis of paraffin-embedded human colon tissue slide using 20341-1-APJ (APJ) antibody at dilution of 1:50 (under 10x lens)



1X10<sup>6</sup> SH-SY5Y cells were stained with 0.2ug APJ antibody (20341-1-AP, red) and control antibody (blue). Fixed with 4% PFA blocked with 3% BSA (30 min). Alexa Fluor 488-conjugated AffiniPure Goat Anti-Rabbit IgG(H+L) with dilution 1:1500.