

For Research Use Only

# Secretogranin II Polyclonal antibody



Catalog Number: 20357-1-AP

1 Publications

## Basic Information

<b>Catalog Number:</b> 20357-1-AP	<b>GenBank Accession Number:</b> BC022509	<b>Purification Method:</b> Antigen affinity purification
<b>Size:</b> 150ul, Concentration: 500 µg/ml by Nanodrop and 233 µg/ml by Bradford method using BSA as the standard;	<b>GeneID (NCBI):</b> 7857	<b>Recommended Dilutions:</b> WB 1:500-1:1000 IHC 1:50-1:500 IF 1:50-1:500
<b>Source:</b> Rabbit	<b>Full Name:</b> secretogranin II (chromogranin C)	
<b>Isotype:</b> IgG	<b>Calculated MW:</b> 617 aa, 71 kDa	
<b>Immunogen Catalog Number:</b> AG14215	<b>Observed MW:</b> 71 kDa	

## Applications

<b>Tested Applications:</b> IF, IHC, WB, ELISA	<b>Positive Controls:</b> WB : SH-SY5Y cells, IHC : mouse pancreas tissue, human prostate cancer tissue IF : mouse pancreas tissue,
<b>Cited Applications:</b> CoIP, IHC, WB	
<b>Species Specificity:</b> human, mouse, rat	
<b>Cited Species:</b> human	
<b>Note-IHC: suggested antigen retrieval with TE buffer pH 9.0; (*) Alternatively, antigen retrieval may be performed with citrate buffer pH 6.0</b>	

## Background Information

SCG2, also known as secretogranin II or Chromogranin C, is a member of the chromogranin/secretogranin family of neuroendocrine secretory proteins. It is widely distributed in nervous and endocrine tissues, and abundant in neuroendocrine granules. In the brain secretogranin II is almost completely processed to secretoneurin, a peptide involved in neurite outgrowth, neuroprotection and neuronal plasticity.

## Notable Publications

Author	Pubmed ID	Journal	Application
Chao Fang	34160138	Mol Oncol	WB, IHC, CoIP

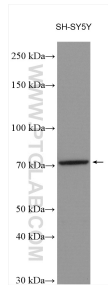
## Storage

**Storage:**  
Store at -20°C. Stable for one year after shipment.  
**Storage Buffer:**  
PBS with 0.02% sodium azide and 50% glycerol pH 7.3.  
Aliquoting is unnecessary for -20°C storage

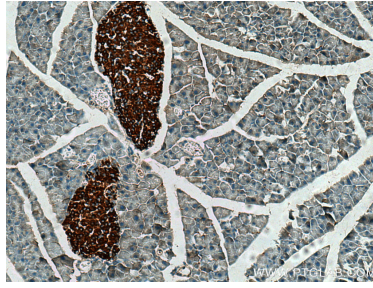
For technical support and original validation data for this product please contact:  
T: 1 (888) 4PTGLAB (1-888-478-4522) (toll free in USA), or 1(312) 455-8498 (outside USA)  
E: proteintech@ptglab.com  
W: ptglab.com

This product is exclusively available under Proteintech Group brand and is not available to purchase from any other manufacturer.

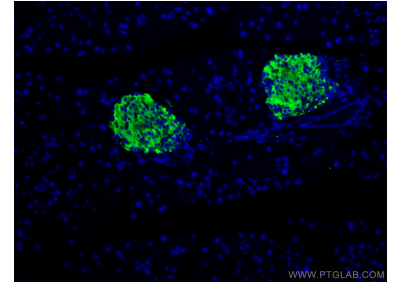
## Selected Validation Data



Various lysates were subjected to SDS PAGE followed by western blot with 20357-1-AP (Secretogranin II antibody) at dilution of 1:800 incubated at room temperature for 1.5 hours.



Immunohistochemical analysis of paraffin-embedded mouse pancreas tissue slide using 20357-1-AP (Secretogranin II antibody) at dilution of 1:200 (under 10x lens). Heat mediated antigen retrieval with Tris-EDTA buffer (pH 9.0).



Immunofluorescent analysis of (4% PFA) fixed mouse pancreas tissue using 20357-1-AP (Secretogranin II antibody), at dilution of 1:100 and CoraLite®488-Conjugated AffiniPure Goat Anti-Rabbit IgG(H+L).