

For Research Use Only

SUZ12 Polyclonal antibody

Catalog Number: 20366-1-AP

Featured Product

19 Publications



Basic Information

Catalog Number:

20366-1-AP

Size:

150ul, Concentration: 500 ug/ml by Nanodrop;

Source:

Rabbit

Isotype:

IgG

GenBank Accession Number:

NM_015355

GeneID (NCBI):

23512

UNIPROT ID:

Q15022

Full Name:

suppressor of zeste 12 homolog (Drosophila)

Calculated MW:

83 kDa

Observed MW:

80-90 kDa

Purification Method:

Antigen affinity purification

Recommended Dilutions:

WB: 1:1000-1:6000

IP: 0.5-4.0 ug for 1.0-3.0 mg of total protein lysate

IHC: 1:200-1:800

Applications

Tested Applications:

WB, IP, IHC, ELISA

Cited Applications:

WB, IHC, IP, CoIP

Species Specificity:

human, rat

Cited Species:

human, mouse, rat

Note-IHC: suggested antigen retrieval with TE buffer pH 9.0; (*) Alternatively, antigen retrieval may be performed with citrate buffer pH 6.0

Positive Controls:

WB : HEK-293 cells, HeLa cells, HepG2 cells, MCF-7 cells

IP : HeLa cells,

IHC : human breast cancer tissue,

Background Information

SUZ12, also termed CHET9, JAZ1 or KIAA0160, belongs to the VEFs (VRN2-EMF2-FIS2-SU(Z)12) family. It is a polycomb group (PcG) protein. SUZ12 is a component of the PRC2/EED-EZH2 complex, which methylates 'Lys-9' and 'Lys-27' of histone H3, leading to transcriptional repression of the affected target gene. The PRC2/EED-EZH2 complex may also serve as a recruiting platform for DNA methyltransferases, thereby linking two epigenetic repression systems. Genes repressed by the PRC2/EED-EZH2 complex include HOXC8, HOXA9, MYT1 and CDKN2A. A chromosomal aberration involving SUZ12 may be a cause of endometrial stromal tumors.

Notable Publications

Author	Pubmed ID	Journal	Application
Masamitsu N Asaka	27646999	Sci Rep	WB
Zhongwei Li	34775498	Cell Death Dis	WB, IP
Cheng Wang	35623249	Eur J Med Chem	WB

Storage

Storage:

Store at -20°C. Stable for one year after shipment.

Storage Buffer:

PBS with 0.02% sodium azide and 50% glycerol, pH7.3

Aliquoting is unnecessary for -20°C storage

*** 20ul sizes contain 0.1% BSA

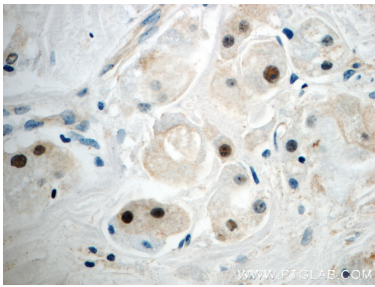
For technical support and original validation data for this product please contact:

T: 1 (888) 4PTGLAB (1-888-478-4522) (toll free in USA), or 1(312) 455-8498 (outside USA)

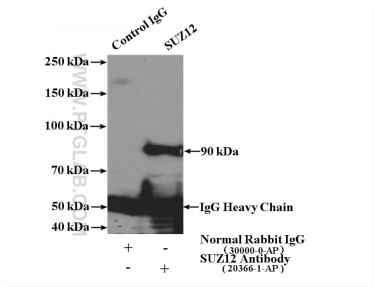
E: proteintech@ptglab.com
W: ptglab.com

This product is exclusively available under Proteintech Group brand and is not available to purchase from any other manufacturer.

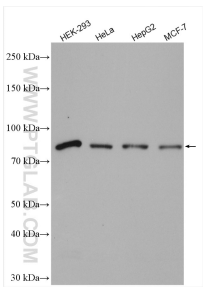
Selected Validation Data



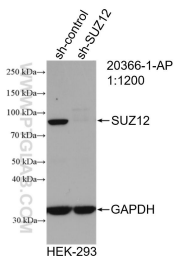
Immunohistochemical analysis of paraffin-embedded human breast cancer slide using 20366-1-AP (SUZ12 Antibody) at dilution of 1:400.



IP result of anti-SUZ12 (IP:20366-1-AP, 4ug; Detection:20366-1-AP 1:500) with HeLa cells lysate 3200ug.



Various lysates were subjected to SDS PAGE followed by western blot with 20366-1-AP (SUZ12 antibody) at dilution of 1:3000 incubated at room temperature for 1.5 hours.



WB result of SUZ12 antibody (20366-1-AP; 1:1200; incubated at room temperature for 1.5 hours) with sh-Control and sh-SUZ12 transfected HEK-293 cells.