

For Research Use Only

# MIF Polyclonal ANTIBODY



Catalog Number: 20415-1-AP

Featured Product

6 Publications

## Basic Information

**Catalog Number:**

20415-1-AP

**Size:**

150UL, Concentration: 300 µg/ml by Bradford method using BSA as the standard;

**Source:**

Rabbit

**Isotype:**

IgG

**Immunogen Catalog Number:**

AG14058

**GenBank Accession Number:**

BC000447

**GeneID (NCBI):**

4282

**Full Name:**

macrophage migration inhibitory factor (glycosylation-inhibiting factor)

**Calculated MW:**

115 aa, 12 kDa

**Observed MW:**

12 kDa

**Purification Method:**

Antigen affinity purification

**Recommended Dilutions:**

WB 1:500-1:2000

IP 0.5-4.0 µg for IP and 1:500-1:2000 for WB

IF 1:50-1:500

## Applications

**Tested Applications:**

FC, IF, IP, WB, ELISA

**Cited Applications:**

WB

**Species Specificity:**

human, rat, mouse

**Cited Species:**

human

**Positive Controls:**

WB: HL-60 cells, Y79 cells, rat spleen tissue, U-937 cells

IP: mouse spleen tissue,

IF: Neuro-2a cells,

## Background Information

### Notable Publications

| Author        | Pubmed ID | Journal     | Application |
|---------------|-----------|-------------|-------------|
| Rui-Min Liu   | 29079416  | Cancer Lett | WB,IHC      |
| Langdong Chen | 27754507  | Mol Biosyst |             |
| Xing Guo      | 29113309  | Oncotarget  | WB,IHC      |

## Storage

**Storage:**

Store at -20°C. Stable for one year after shipment.

**Storage Buffer:**

PBS with 0.02% sodium azide and 50% glycerol pH 7.3.

Aliquoting is unnecessary for -20°C storage

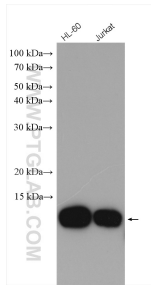
For technical support and original validation data for this product please contact:

T: 1 (888) 4PTGLAB (1-888-478-4522) (toll free in USA), or 1(312) 455-8498 (outside USA)

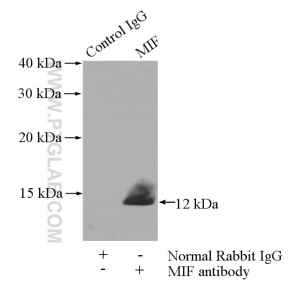
E: proteintech@ptglab.com  
W: ptglab.com

This product is exclusively available under Proteintech Group brand and is not available to purchase from any other manufacturer.

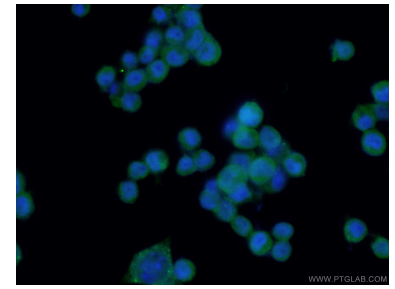
## Selected Validation Data



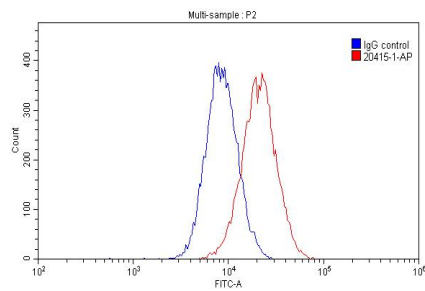
Various lysates were subjected to SDS PAGE followed by western blot with 20415-1-AP (MIF antibody) at dilution of 1:1000 incubated at room temperature for 1.5 hours.



IP Result of anti-MIF (IP:20415-1-AP, 4ug; Detection:20415-1-AP 1:1000) with mouse spleen tissue lysate 4000ug.



Immunofluorescent analysis of (-20°C Ethanol) fixed Neuro-2a cells using 20415-1-AP (MIF antibody) at dilution of 1:50 and Alexa Fluor 488-Conjugated AffiniPure Goat Anti-Rabbit IgG(H+L).



1X10<sup>6</sup> THP-1 cells were stained with 0.20ug MIF antibody (20415-1-AP, red) and control antibody (blue). Fixed with 90% MeOH.