

For Research Use Only

# GLUT2 Polyclonal antibody

Catalog Number: 20436-1-AP

Featured Product

24 Publications



## Basic Information

### Catalog Number:

20436-1-AP

### Size:

150ul, Concentration: 550 µg/ml by Nanodrop and 220 µg/ml by Bradford method using BSA as the standard;

### Source:

Rabbit

### Isotype:

IgG

### Immunogen Catalog Number:

AG14204

### GenBank Accession Number:

BC060041

### GeneID (NCBI):

6514

### Full Name:

solute carrier family 2 (facilitated glucose transporter), member 2

### Calculated MW:

351 aa, 39 kDa

### Observed MW:

60-70 kDa, 38-45 kDa

### Purification Method:

Antigen affinity purification

### Recommended Dilutions:

WB 1:200-1:1000

IP 0.5-4.0 ug for IP and 1:500-1:2000 for WB

IHC 1:50-1:1000

## Applications

### Tested Applications:

IHC, IP, WB, ELISA

### Cited Applications:

IF, IHC, WB

### Species Specificity:

human, rat, mouse

### Cited Species:

human, Lasiopodomys brandtii, mouse, rat

**Note-IHC: suggested antigen retrieval with TE buffer pH 9.0; (\*) Alternatively, antigen retrieval may be performed with citrate buffer pH 6.0**

### Positive Controls:

WB: rat liver tissue, HEK 293 cells

IP: mouse kidney tissue,

IHC: human small intestine tissue,

## Background Information

GLUT2 is a member of glucose transporters or GLUTs which catalyze the glucose transport across plasma membrane. GLUT2 is selectively expressed in hepatocytes, pancreatic beta cells, and absorptive renal and intestinal epithelial cells. GLUT2 is required to maintain normal glucose homeostasis and normal function and development of the endocrine pancreas. Its absence leads to symptoms characteristic of non-insulin-dependent diabetes mellitus. This antibody detected 60-70 kDa fully glycosylated, matured GLUT2 and a nonglycosylated form of GLUT2 around 38-45 kDa. (9354799, 12101013)

## Notable Publications

Author	Pubmed ID	Journal	Application
Wei Xu	32935679	Food Funct	WB
Yan Zhu	32875583	J Food Biochem	WB
Qicheng Ni	33120423	J Clin Endocrinol Metab	IF

## Storage

### Storage:

Store at -20°C. Stable for one year after shipment.

### Storage Buffer:

PBS with 0.02% sodium azide and 50% glycerol pH 7.3.

Aliquoting is unnecessary for -20°C storage

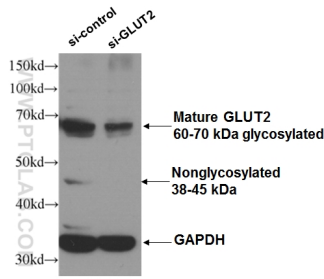
For technical support and original validation data for this product please contact:

T: 1 (888) 4PTGLAB (1-888-478-4522) (toll free in USA), or 1(312) 455-8498 (outside USA)

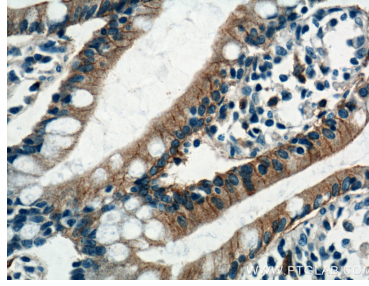
E: proteintech@ptglab.com  
W: ptglab.com

**This product is exclusively available under Proteintech Group brand and is not available to purchase from any other manufacturer.**

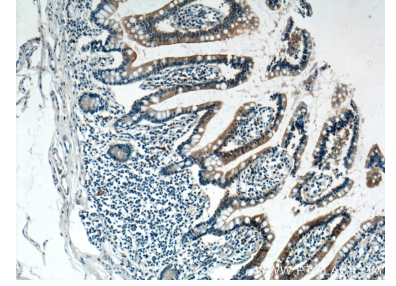
## Selected Validation Data



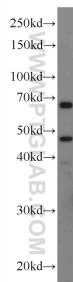
WB result of GLUT2 antibody (20436-1-AP, 1:300) with si-Control and si-GLUT2 transfected HEK 293 cells.



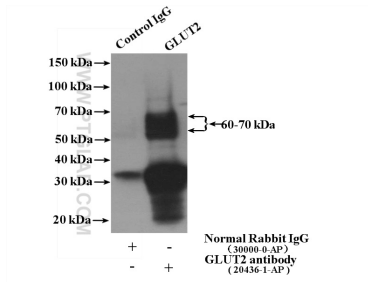
Immunohistochemical analysis of paraffin-embedded human small intestine tissue slide using 20436-1-AP (GLUT2 antibody at dilution of 1:500 (under 40x lens).



Immunohistochemical analysis of paraffin-embedded human small intestine tissue slide using 20436-1-AP (GLUT2 antibody at dilution of 1:500 (under 10x lens).



rat liver tissue were subjected to SDS PAGE followed by western blot with 20436-1-AP (GLUT2 antibody at dilution of 1:300 incubated at room temperature for 1.5 hours.



IP Result of anti-GLUT2 (IP:20436-1-AP, 4ug; Detection:20436-1-AP 1:1000) with mouse kidney tissue lysate 4000ug.