

For Research Use Only

RAE1 Polyclonal antibody

Catalog Number: 20491-1-AP **1 Publications**



Basic Information

Catalog Number: 20491-1-AP	GenBank Accession Number: BC103754	Purification Method: Antigen affinity purification
Size: 150ul, Concentration: 350 µg/ml by Nanodrop and 273 µg/ml by Bradford method using BSA as the standard;	GeneID (NCBI): 8480	Recommended Dilutions: WB 1:500-1:2000 IHC 1:50-1:500 IF 1:50-1:500
Source: Rabbit	Full Name: RAE1 RNA export 1 homolog (S. pombe)	
Isotype: IgG	Calculated MW: 368 aa, 41 kDa	
Immunogen Catalog Number: AG12102	Observed MW: 41 kDa	

Applications

Tested Applications: IF, IHC, WB, ELISA	Positive Controls: WB : BxPC-3 cells, HEK-293 cells, HepG2 cells IHC : human testis tissue, IF : HepG2 cells,
Cited Applications: IHC, WB	
Species Specificity: human	
Cited Species: human	
Note-IHC: suggested antigen retrieval with TE buffer pH 9.0; (*) Alternatively, antigen retrieval may be performed with citrate buffer pH 6.0	

Background Information

Notable Publications

Author	Pubmed ID	Journal	Application
Yuta Kobayashi	34008277	Cancer Sci	WB IHC

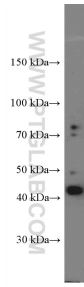
Storage

Storage:
Store at -20°C. Stable for one year after shipment.
Storage Buffer:
PBS with 0.02% sodium azide and 50% glycerol pH 7.3.
Aliquoting is unnecessary for -20°C storage

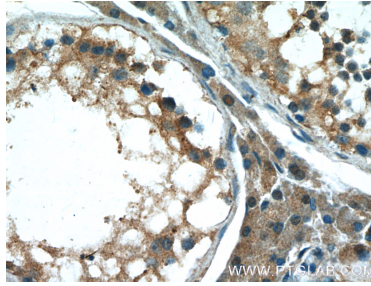
For technical support and original validation data for this product please contact:
T: 1 (888) 4PTGLAB (1-888-478-4522) (toll free in USA), or 1(312) 455-8498 (outside USA)
E: proteintech@ptglab.com
W: ptglab.com

This product is exclusively available under Proteintech Group brand and is not available to purchase from any other manufacturer.

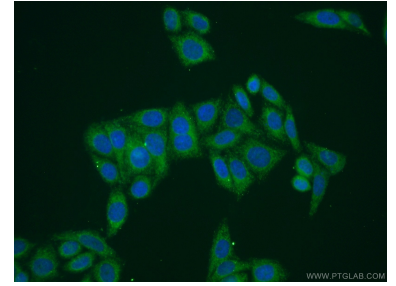
Selected Validation Data



BxPC-3 cells were subjected to SDS PAGE followed by western blot with 20491-1-AP (RAE1 Antibody) at dilution of 1:1000 incubated at room temperature for 1.5 hours.



Immunohistochemical analysis of paraffin-embedded human testis tissue slide using 20491-1-AP (RAE1 Antibody) at dilution of 1:200 (under 40x lens).



Immunofluorescent analysis of (-20°C Ethanol) fixed HepG2 cells using 20491-1-AP (RAE1 antibody) at dilution of 1:50 and Alexa Fluor 488-conjugated AffiniPure Goat Anti-Rabbit IgG(H+L).