

For Research Use Only

# Beta Actin Polyclonal antibody

Catalog Number: 20536-1-AP

Featured Product

4500 Publications



## Basic Information

### Catalog Number:

20536-1-AP

### Size:

150ul, Concentration: 600 ug/ml by Nanodrop;

### Source:

Rabbit

### Isotype:

IgG

### Immunogen Catalog Number:

AG14521

### GenBank Accession Number:

BC002409

### GeneID (NCBI):

60

### UNIPROT ID:

P60709

### Full Name:

actin, beta

### Calculated MW:

375 aa, 42 kDa

### Observed MW:

42 kDa

### Purification Method:

Antigen affinity purification

### Recommended Dilutions:

WB: 1:4000-1:10000

IHC: 1:50-1:500

IF/ICC: 1:200-1:800

## Applications

### Tested Applications:

WB, IHC, IF/ICC, ELISA

### Cited Applications:

WB, IHC, IF, IP, CoIP, ELISA

### Species Specificity:

human, mouse, rat, canine, monkey

### Cited Species:

human, mouse, rat, chicken, goat, sheep, yeast, Ochotona curzoniae, camelus bactrianus, carp

**Note-IHC: suggested antigen retrieval with TE buffer pH 9.0; (\*) Alternatively, antigen retrieval may be performed with citrate buffer pH 6.0**

### Positive Controls:

**WB:** HEK-293 cells, A549 cells, C6 cells, mouse colon tissue, Caco-2 cells, RAW 264.7 cells, SMMC-7721 cells, HeLa cells, HepG2 cells, Jurkat cells, mouse brain tissue, rat brain tissue, NIH/3T3 cells, mouse liver tissue, rat kidney tissue, rat spleen tissue, rat liver tissue

**IHC:** human colon tissue, human kidney tissue

**IF/ICC:** MDCK cells,

## Background Information

Beta Actin, also named as ACTB and F-Actin, belongs to the actin family. Actins are highly conserved globular proteins that are involved in various types of cell motility and are ubiquitously expressed in all eukaryotic cells. At least six isoforms of actins are known in mammals and other vertebrates: alpha (ACTC1, cardiac muscle 1), alpha 1 (ACTA1, skeletal muscle) and 2 (ACTA2, aortic smooth muscle), beta (ACTB), gamma 1 (ACTG1) and 2 (ACTG2, enteric smooth muscle). Beta and gamma 1 are two non-muscle actin proteins. Most actins consist of 376aa, while ACTG2 (rich in muscles) has 375aa and ACTG1 (found in non-muscle cells) has only 374aa. Beta actin has been widely used as the internal control in RT-PCR and Western Blotting as a 42-kDa protein. However, the 37-40, 31, 15 kDa cleaved fragment of beta actin can be generated during apoptosis process. This antibody was generated against N-terminal region of human beta actin protein and can cross-react with other actins. (9173887, 11217076, 10229193)

## Notable Publications

Author	Pubmed ID	Journal	Application
Xiao-Feng Zhu	36180975	Phytother Res	WB
Yu Xu	36247302	Am J Transl Res	WB
Ling Guo	34867437	Front Physiol	WB

## Storage

### Storage:

Store at -20°C. Stable for one year after shipment.

### Storage Buffer:

PBS with 0.02% sodium azide and 50% glycerol, pH7.3

Aliquoting is unnecessary for -20°C storage

\*\*\* 20ul sizes contain 0.1% BSA

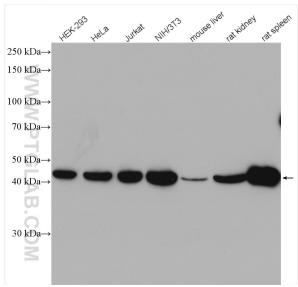
For technical support and original validation data for this product please contact:

T: 1 (888) 4PTGLAB (1-888-478-4522) (toll free in USA), or 1(312) 455-8498 (outside USA)

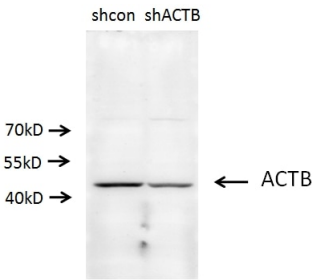
E: [proteintech@ptglab.com](mailto:proteintech@ptglab.com)  
W: [ptglab.com](http://ptglab.com)

This product is exclusively available under Proteintech Group brand and is not available to purchase from any other manufacturer.

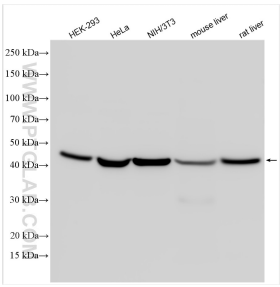
Selected Validation Data



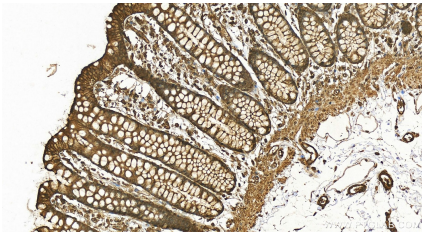
Various lysates were subjected to SDS PAGE followed by western blot with 20536-1-AP (beta Actin antibody) at dilution of 1:5000 incubated at room temperature for 1.5 hours.



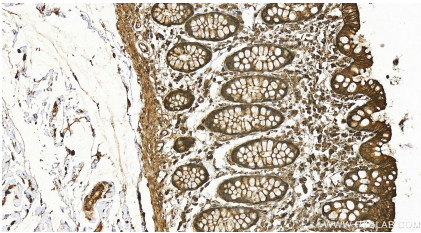
A549 cells (shcontrol and shRNA of Beta actin) were subjected to SDS PAGE followed by western blot with 20536-1-AP (ACTB antibody) at dilution of 1:500.



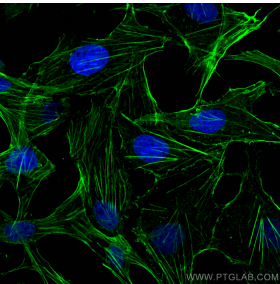
Various lysates were subjected to SDS PAGE followed by western blot with 20536-1-AP (Beta Actin antibody) at dilution of 1:10000 incubated at room temperature for 1.5 hours.



Immunohistochemical analysis of paraffin-embedded human normal colon slide using 20536-1-AP (Beta Actin antibody) at dilution of 1:200 (under 20x lens). Heat mediated antigen retrieval with Tris-EDTA buffer (pH 9.0).



Immunohistochemical analysis of paraffin-embedded human normal colon slide using 20536-1-AP (Beta Actin antibody) at dilution of 1:200 (under 20x lens). Heat mediated antigen retrieval with Tris-EDTA buffer (pH 9.0).



Immunofluorescent analysis of (4% PFA) fixed MDCK cells using Beta Actin antibody (20536-1-AP) at dilution of 1:400 and Multi-rAb CoraLite® Plus 488-Goat Anti-Rabbit Recombinant Secondary Antibody (H+L) (RGAR002).