

For Research Use Only

# CBLN4 Polyclonal ANTIBODY

Catalog Number: 20559-1-AP



## Basic Information

Catalog Number:  
20559-1-AP

Size:  
28 µg/150 µl

Source:  
Rabbit

Isotype:  
IgG

Purification Method:  
Antigen affinity purification

Immunogen Catalog Number:

GenBank Accession Number:  
NM\_080617

GeneID (NCBI):  
140689

Full Name:  
cerebellin 4 precursor

Calculated MW:  
22 kDa

Observed MW:  
22 kDa

Recommended Dilutions:

WB 1:200-1:1000

IHC 1:20-1:200

## Applications

Tested Applications:

IHC, WB, ELISA

Species Specificity:

human, mouse, rat

**Note: suggested antigen retrieval with *TE buffer pH 9.0*; (\*) Alternatively, antigen retrieval may be performed with *citrate buffer pH 6.0***

Positive Controls:

WB : mouse cerebellum tissue; mouse brain tissue, mouse kidney tissue

IHC : human cerebellum tissue; human testis tissue

## Background Information

CBLN4 may be involved in synaptic functions in the CNS. CBLN4 can enable ER export and secretion of CBLN3. The antibody has no cross reaction to CBLN1, 2, or 3.

## Notable Publications

Author	Pubmed ID	Journal	Application
--------	-----------	---------	-------------

## Storage

Storage:

Store at -20°C. Stable for one year after shipment.

Storage Buffer:

PBS with 0.1% sodium azide and 50% glycerol pH 7.3.

Aliquoting is unnecessary for -20°C storage

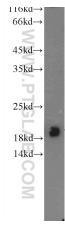
For technical support and original validation data for this product please contact:

T: 1 (888) 4PTGLAB (1-888-478-4522) (toll free in USA), or 1(312) 455-8498 (outside USA)

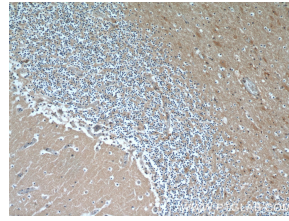
E: [proteintech@ptglab.com](mailto:proteintech@ptglab.com)  
W: [ptglab.com](http://ptglab.com)

This product is exclusively available under Proteintech Group brand and is not available to purchase from any other manufacturer.

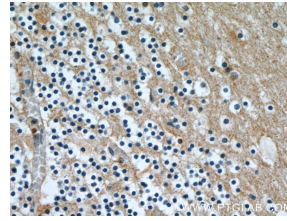
## Selected Validation Data



mouse cerebellum tissue were subjected to SDS PAGE followed by western blot with 20559-1-AP (CBLN4 Antibody) at dilution of 1:300 incubated at room temperature for 1.5 hours



Immunohistochemical of paraffin-embedded human cerebellum using 20559-1-AP (CBLN4 antibody) at dilution of 1:50 (under 10x lens)



Immunohistochemical of paraffin-embedded human cerebellum using 20559-1-AP (CBLN4 antibody) at dilution of 1:50 (under 40x lens)