

For Research Use Only

# HECTD1 Polyclonal antibody

Catalog Number: 20605-1-AP

Featured Product

5 Publications



## Basic Information

**Catalog Number:**

20605-1-AP

**Size:**

150ul , Concentration: 400 µg/ml by Bradford method using BSA as the standard;

**Source:**

Rabbit

**Isotype:**

IgG

**Immunogen Catalog Number:**

AG14581

**GenBank Accession Number:**

BC006237

**GeneID (NCBI):**

25831

**Full Name:**

HECT domain containing 1

**Calculated MW:**

2612 aa, 290 kDa

**Observed MW:**

290 kDa

**Purification Method:**

Antigen affinity purification

**Recommended Dilutions:**

WB 1:500-1:3000

IP 0.5-4.0 ug for IP and 1:500-1:1000 for WB

IHC 1:50-1:500

IF 1:10-1:100

## Applications

**Tested Applications:**

IF, IHC, IP, WB, ELISA

**Cited Applications:**

IF, WB

**Species Specificity:**

human, mouse

**Cited Species:**

human, mouse

**Note-IHC: suggested antigen retrieval with TE buffer pH 9.0; (\*) Alternatively, antigen retrieval may be performed with citrate buffer pH 6.0**

**Positive Controls:**

**WB :** HEK-293 cells, human brain tissue, HeLa cells, mouse brain tissue

**IP :** mouse brain tissue,

**IHC :** human kidney tissue, human brain tissue

**IF :** HeLa cells,

## Background Information

HECTD1 (E3 ubiquitin-protein ligase), which accepts ubiquitin from an E2 ubiquitin-conjugating enzyme in the form of a thioester and then directly transfers the ubiquitin to targeted substrates, may be required for development of the head mesenchyme and neural tube closure. It is also involved in sporadic Parkinson's disease (PMID:16714300). This protein is specific to HECTD1.

## Notable Publications

Author	Pubmed ID	Journal	Application
Hui Yang	33243972	Cell Death Dis	WB
Ying Bai	29114076	J Neurosci	WB
Liu Rui	29797543	Cell Microbiol	WB

## Storage

**Storage:**

Store at -20°C. Stable for one year after shipment.

**Storage Buffer:**

PBS with 0.02% sodium azide and 50% glycerol pH 7.3.

Aliquoting is unnecessary for -20°C storage

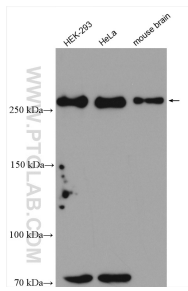
For technical support and original validation data for this product please contact:

T: 1 (888) 4PTGLAB (1-888-478-4522) (toll free in USA), or 1(312) 455-8498 (outside USA)

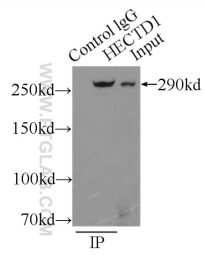
E: proteintech@ptglab.com  
W: ptglab.com

**This product is exclusively available under Proteintech Group brand and is not available to purchase from any other manufacturer.**

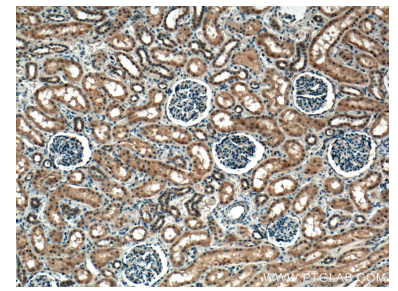
## Selected Validation Data



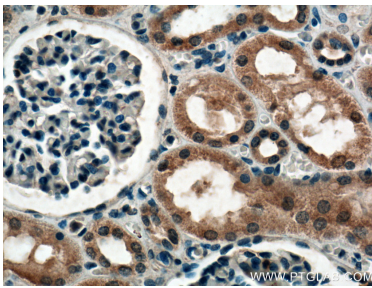
Various lysates were subjected to SDS PAGE followed by western blot with 20605-1-AP (HECTD1 antibody) at dilution of 1:1500 incubated at room temperature for 1.5 hours.



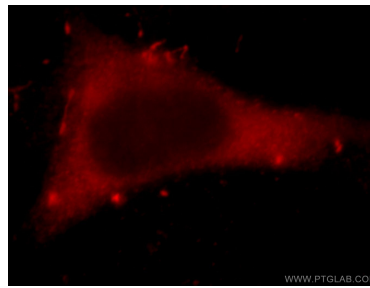
IP Result of anti-HECTD1 (IP:20605-1-AP, 5ug; Detection:20605-1-AP 1:500) with mouse brain tissue lysate 8000ug.



Immunohistochemical analysis of paraffin-embedded human kidney tissue slide using 20605-1-AP (HECTD1 antibody) at dilution of 1:200 (under 10x lens). Heat mediated antigen retrieval with Tris-EDTA buffer (pH 9.0).



Immunohistochemical analysis of paraffin-embedded human kidney tissue slide using 20605-1-AP (HECTD1 antibody) at dilution of 1:200 (under 40x lens). Heat mediated antigen retrieval with Tris-EDTA buffer (pH 9.0).



Immunofluorescent analysis of HeLa cells, using HECTD1 antibody 20605-1-AP at 1:25 dilution and Rhodamine-labeled goat anti-rabbit IgG (red).