

For Research Use Only

CHCHD6 Polyclonal antibody

Catalog Number: 20639-1-AP

Featured Product

6 Publications



Basic Information

Catalog Number:

20639-1-AP

Size:

150UL, Concentration: 327 µg/ml by Bradford method using BSA as the standard;

Source:

Rabbit

Isotype:

IgG

Immunogen Catalog Number:

AG14700

GenBank Accession Number:

BC006123

GeneID (NCBI):

84303

Full Name:

coiled-coil-helix-coiled-coil-helix domain containing 6

Calculated MW:

235 aa, 26 kDa

Observed MW:

26-29 kDa

Purification Method:

Antigen affinity purification

Recommended Dilutions:

WB 1:1000-1:4000

IP 0.5-4.0 µg for IP and 1:500-1:1000 for WB

IHC 1:20-1:200

Applications

Tested Applications:

IHC, IP, WB, ELISA

Cited Applications:

WB

Species Specificity:

human

Cited Species:

human, mouse

Note-IHC: suggested antigen retrieval with TE buffer pH 9.0; (*) Alternatively, antigen retrieval may be performed with citrate buffer pH 6.0

Positive Controls:

WB: HeLa cells,

IP: HeLa cells,

IHC: human stomach tissue,

Background Information

Notable Publications

Author	Pubmed ID	Journal	Application
Virginia Guarani	27623147	Elife	WB
Chengli Ding	26530328	Sci Rep	WB
Virginia Guarani	25997101	Elife	WB

Storage

Storage:

Store at -20°C. Stable for one year after shipment.

Storage Buffer:

PBS with 0.02% sodium azide and 50% glycerol pH 7.3.

Aliquoting is unnecessary for -20°C storage

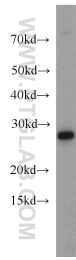
For technical support and original validation data for this product please contact:

T: 1 (888) 4PTGLAB (1-888-478-4522) (toll free in USA), or 1(312) 455-8498 (outside USA)

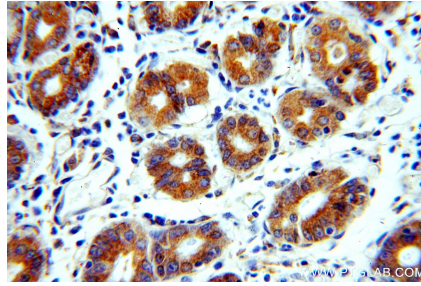
E: proteintech@ptglab.com
W: ptglab.com

This product is exclusively available under Proteintech Group brand and is not available to purchase from any other manufacturer.

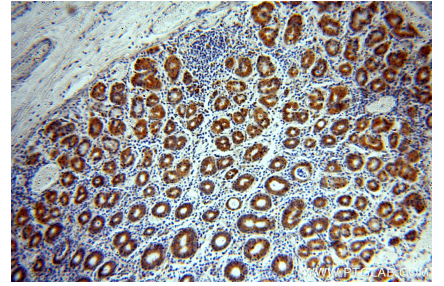
Selected Validation Data



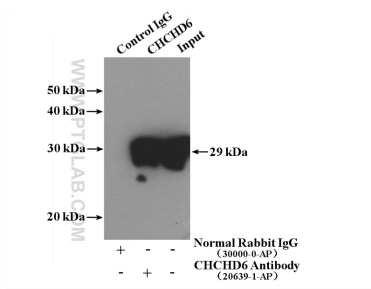
HeLa cells were subjected to SDS PAGE followed by western blot with 20639-1-AP (CHCHD6 antibody) at dilution of 1:500 incubated at room temperature for 1.5 hours.



Immunohistochemical analysis of paraffin-embedded human stomach using 20639-1-AP (CHCHD6 antibody) at dilution of 1:100 (under 40x lens).



Immunohistochemical analysis of paraffin-embedded human stomach using 20639-1-AP (CHCHD6 antibody) at dilution of 1:100 (under 10x lens).



IP Result of anti-CHCHD6 (IP:20639-1-AP, 4 μ g; Detection:20639-1-AP 1:500) with HeLa cells lysate 1200 μ g.