

For Research Use Only

E-cadherin Polyclonal ANTIBODY



Catalog Number: 20648-1-AP **3 Publications**

Basic Information

Catalog Number: 20648-1-AP	GenBank Accession Number: NM_004360	Purification Method: Antigen affinity purification
Size: 150UL, Concentration: 200 µg/ml by Bradford method using BSA as the standard;	GeneID (NCBI): 999	Recommended Dilutions: WB 1:500-1:1000 IHC 1:50-1:200 IF 1:10-1:100
Source: Rabbit	Full Name: cadherin 1, type 1, E-cadherin (epithelial)	
Isotype: IgG	Calculated MW: 97 kDa	
	Observed MW: 100-125 kDa	

Applications

Tested Applications: FC, IF, IHC, WB, ELISA	Positive Controls: WB: PC-3 cells, IHC: human colon cancer tissue, human liver cancer tissue IF: HepG2 cells,
Cited Applications: IF, WB	
Species Specificity: human, mouse, rat	
Cited Species: human	

Note-IHC: suggested antigen retrieval with TE buffer pH 9.0; (*) Alternatively, antigen retrieval may be performed with citrate buffer pH 6.0

Background Information

E-cadherin (epithelial cadherin), also known as CDH1 (cadherin 1) or CAM 120/80, is a classical member of the cadherin superfamily which also include N-, P-, R-, and B-cadherins. It has been regarded as a marker for spermatogonial stem cells in mice (PMID:23509752). E-cadherin is expressed on the cell surface in most epithelial tissues. The extracellular region of E-cadherin establishes calcium-dependent homophilic trans binding, providing specific interaction with adjacent cells, while the cytoplasmic domain is connected to the actin cytoskeleton through the interaction with p120-, α -, β -, and γ -catenin (plakoglobin). E-cadherin is important in the maintenance of the epithelial integrity, and is involved in mechanisms regulating proliferation, differentiation, and survival of epithelial cell. E-cadherin may also play a role in tumorigenesis. It is considered to be an invasion suppressor protein and its loss is an indicator of high tumor aggressiveness. This antibody is specific to CDH1.

Notable Publications

Author	Pubmed ID	Journal	Application
Tianming Liu	26459119	Mol Med Rep	WB
Ting-Hua Hu	25150783	Cancer Lett	WB
Xiaoli Pan	25138963	Endocrine	WB, IF

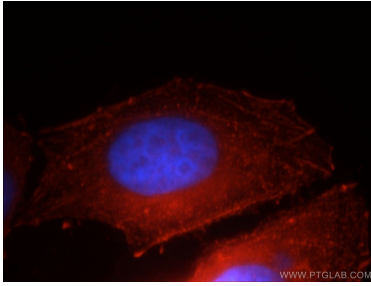
Storage

Storage:
Store at -20°C. Stable for one year after shipment.
Storage Buffer:
PBS with 0.02% sodium azide and 50% glycerol pH 7.3.
Aliquoting is unnecessary for -20°C storage

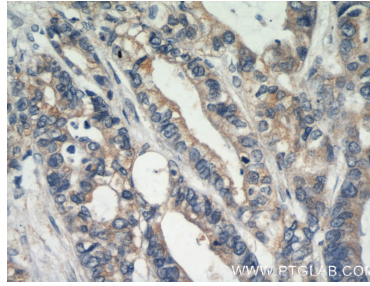
For technical support and original validation data for this product please contact:
T: 1 (888) 4PTGLAB (1-888-478-4522) (toll free in USA), or 1(312) 455-8498 (outside USA)
E: proteintech@ptglab.com
W: ptglab.com

This product is exclusively available under Proteintech Group brand and is not available to purchase from any other manufacturer.

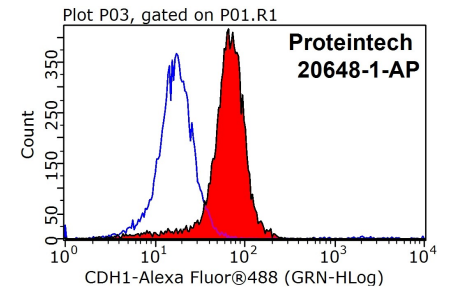
Selected Validation Data



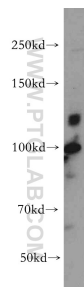
Immunofluorescent analysis of HepG2 cells, using CDH1 antibody 20648-1-AP at 1:25 dilution and Rhodamine-labeled goat anti-rabbit IgG (red). Blue pseudocolor = DAPI (fluorescent DNA dye).



Immunohistochemical analysis of paraffin-embedded human colon cancer using 20648-1-AP (E-cadherin antibody) at dilution of 1:50 (under 40x lens).



1X10⁶ HepG2 cells were stained with 0.2ug E-cadherin antibody (20648-1-AP, red) and control antibody (blue). Fixed with 4% PFA blocked with 3% BSA (30 min). Alexa Fluor 488-conjugated AffiniPure Goat Anti-Rabbit IgG(H+L) with dilution 1:200.



PC-3 cells were subjected to SDS PAGE followed by western blot with 20648-1-AP (E-cadherin antibody) at dilution of 1:500 incubated at room temperature for 1.5 hours.