

For Research Use Only

# NPTX1 Polyclonal antibody

Catalog Number: 20656-1-AP

Featured Product

4 Publications



## Basic Information

### Catalog Number:

20656-1-AP

### Size:

150ul, Concentration: 350 µg/ml by Nanodrop and 300 µg/ml by Bradford method using BSA as the standard;

### Source:

Rabbit

### Isotype:

IgG

### GenBank Accession Number:

NM\_002522

### GeneID (NCBI):

4884

### Full Name:

neuronal pentraxin I

### Calculated MW:

47 kDa

### Observed MW:

47 kDa

### Purification Method:

Antigen affinity purification

### Recommended Dilutions:

WB 1:500-1:1000

IF 1:10-1:100

## Applications

### Tested Applications:

IF, WB, ELISA

### Cited Applications:

ColP, IF, WB

### Species Specificity:

human, mouse, rat

### Cited Species:

human, mouse

### Positive Controls:

WB : HepG2 cells, mouse liver tissue

IF : HeLa cells,

## Background Information

NPTX1, also named as NP1, may mediate uptake of degraded synaptic material which could play an important role in synaptic remodeling. NPTX1 can mediate the neuronal and glial uptake of the snake venom toxin taipoxin. The antibody is specific to NPTX1.

## Notable Publications

Author	Pubmed ID	Journal	Application
Kai Zhang	34142698	Acta Biochim Biophys Sin (Shanghai)	WB
Réka Á Kovács	33628204	Front Immunol	WB, ColP
Brianna Dufek	32822386	PLoS One	IF

## Storage

### Storage:

Store at -20°C. Stable for one year after shipment.

### Storage Buffer:

PBS with 0.02% sodium azide and 50% glycerol pH 7.3.

Aliquoting is unnecessary for -20°C storage

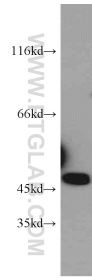
For technical support and original validation data for this product please contact:

T: 1 (888) 4PTGLAB (1-888-478-4522) (toll free in USA), or 1(312) 455-8498 (outside USA)

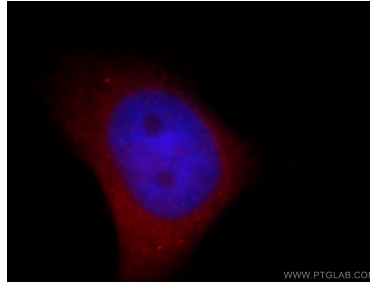
E: [proteintech@ptglab.com](mailto:proteintech@ptglab.com)  
W: [ptglab.com](http://ptglab.com)

This product is exclusively available under Proteintech Group brand and is not available to purchase from any other manufacturer.

## Selected Validation Data



HepG2 cells were subjected to SDS PAGE followed by western blot with 20656-1-AP (NPTX1 antibody) at dilution of 1:400 incubated at room temperature for 1.5 hours.



Immunofluorescent analysis of HeLa cells, using NPTX1 antibody 20656-1-AP at 1:25 dilution and Rhodamine-labeled goat anti-rabbit IgG (red). Blue pseudocolor = DAPI (fluorescent DNA dye).