

For Research Use Only

PAWR Polyclonal antibody

Catalog Number: 20688-1-AP

3 Publications



Basic Information

Catalog Number:

20688-1-AP

Size:

150ul, Concentration: 500 ug/ml by Nanodrop and 427 ug/ml by Bradford method using BSA as the standard;

Source:

Rabbit

Isotype:

IgG

GenBank Accession Number:

NM_002583

GeneID (NCBI):

5074

UNIPROT ID:

Q96LZ0

Full Name:

PRKC, apoptosis, WT1, regulator

Calculated MW:

37 kDa

Observed MW:

45 kDa

Purification Method:

Antigen affinity purification

Recommended Dilutions:

WB: 1:500-1:1000

IHC: 1:20-1:200

FC (Intra): 0.40 ug per 10⁶ cells in a 100 µl suspension

Applications

Tested Applications:

WB, IHC, FC (Intra), ELISA

Cited Applications:

WB, IHC

Species Specificity:

human, mouse, rat

Cited Species:

human

Positive Controls:

WB : mouse heart tissue, mouse kidney tissue

IHC : human breast cancer tissue, human kidney tissue

FC (Intra) : HeLa cells,

Note-IHC: suggested antigen retrieval with TE buffer pH 9.0; (*) Alternatively, antigen retrieval may be performed with citrate buffer pH 6.0

Background Information

PAWR, also named as PAR4, is a pro-apoptotic protein capable of selectively inducing apoptosis in cancer cells, sensitizing the cells to diverse apoptotic stimuli and causing regression of tumors in animal models. It induces apoptosis in certain cancer cells by activation of the Fas prodeath pathway and coparallel inhibition of NF-kappa-B transcriptional activity. PAWR inhibits the transcriptional activation and augments the transcriptional repression mediated by WT1. It down-regulates the anti-apoptotic protein BCL2 via its interaction with WT1. PAWR may be directly involved in regulating the amyloid precursor protein (APP) cleavage activity of BACE1. The antibody is specific to PAWR.

Notable Publications

Author	Pubmed ID	Journal	Application
Jiahong Tan	33317551	Cancer Cell Int	IHC
Rokana Taftaf	34381029	Nat Commun	WB
Jinlong Lin	40425546	Cell Discov	WB

Storage

Storage:

Store at -20°C. Stable for one year after shipment.

Storage Buffer:

PBS with 0.02% sodium azide and 50% glycerol, pH7.3

Aliquoting is unnecessary for -20°C storage

*** 20ul sizes contain 0.1% BSA

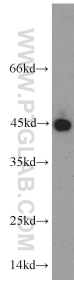
For technical support and original validation data for this product please contact:

T: 1 (888) 4PTGLAB (1-888-478-4522) (toll free in USA), or 1(312) 455-8498 (outside USA)

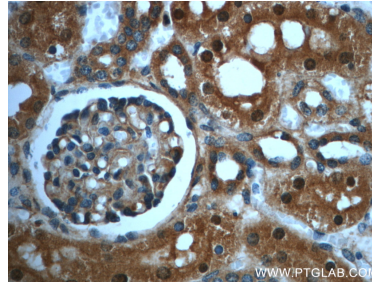
E: proteintech@ptglab.com
W: ptglab.com

This product is exclusively available under Proteintech Group brand and is not available to purchase from any other manufacturer.

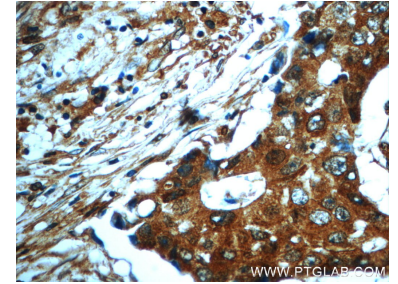
Selected Validation Data



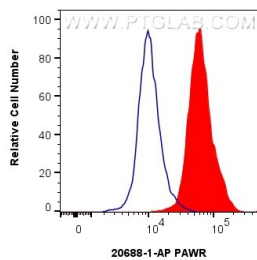
mouse heart tissue were subjected to SDS PAGE followed by western blot with 20688-1-AP (PAWR antibody) at dilution of 1:400 incubated at room temperature for 1.5 hours.



Immunohistochemical analysis of paraffin-embedded human kidney slide using 20688-1-AP (PAWR Antibody) at dilution of 1:50.



Immunohistochemical analysis of paraffin-embedded human breast cancer slide using 20688-1-AP (PAWR Antibody) at dilution of 1:50.



1×10^6 HeLa cells were intracellularly stained with 0.4 μ g PAWR Polyclonal antibody (20688-1-AP) and CoraLite®488-Conjugated Goat Anti-Rabbit IgG(H+L) (SA00013-2)(red), or 0.4 μ g Rabbit IgG control Rabbit PolyAb (30000-0-AP) (blue). Cells were fixed with 4% PFA and permeabilized with Flow Cytometry Perm Buffer (PF00011-C).