

For Research Use Only

# RELN Polyclonal antibody

Catalog Number: 20689-1-AP

2 Publications



## Basic Information

Catalog Number:

20689-1-AP

Size:

150ul, Concentration: 700 ug/ml by Nanodrop;

Source:

Rabbit

Isotype:

IgG

GenBank Accession Number:

NM\_005045

GeneID (NCBI):

5649

UNIPROT ID:

P78509

Full Name:

reelin

Calculated MW:

388 kDa

Purification Method:

Antigen affinity purification

Recommended Dilutions:

IHC: 1:50-1:500

IF-P: 1:50-1:500

## Applications

Tested Applications:

IHC, IF-P, ELISA

Cited Applications:

IF

Species Specificity:

human, mouse

Cited Species:

mouse, pig

**Note-IHC: suggested antigen retrieval with TE buffer pH 9.0; (\*) Alternatively, antigen retrieval may be performed with citrate buffer pH 6.0**

Positive Controls:

IHC: human liver cancer tissue, human liver tissue

IF-P: mouse brain tissue,

## Background Information

RELN belongs to the reelin family. It is an extracellular matrix serine protease that plays a role in layering of neurons in the cerebral cortex and cerebellum. It is a secreted glycoprotein which is essential for neuronal migration in the cortex. RELN regulates microtubule function in neurons and neuronal migration. It affects migration of sympathetic preganglionic neurons in the spinal cord, where it seems to act as a barrier to neuronal migration. Enzymatic activity is important for the modulation of cell adhesion. Binding to the extracellular domains of lipoprotein receptors VLDLR and ApoER2, RELN induces tyrosine phosphorylation of Dab1 and modulation of Tau phosphorylation. Defects in RELN are the cause of lissencephaly type 2 (LIS2).

## Notable Publications

Author	Pubmed ID	Journal	Application
Hannah E Jones	40126161	Stem Cells Dev	IF
Lin Rao	37783617	Sci Bull (Beijing)	IF

## Storage

Storage:

Store at -20°C. Stable for one year after shipment.

Storage Buffer:

PBS with 0.02% sodium azide and 50% glycerol, pH7.3

Aliquoting is unnecessary for -20°C storage

\*\*\* 20ul sizes contain 0.1% BSA

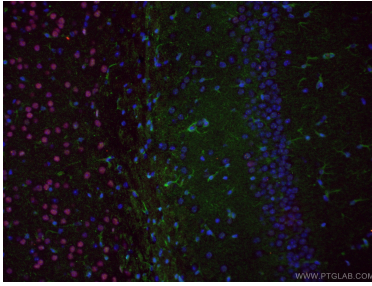
For technical support and original validation data for this product please contact:

T: 1 (888) 4PTGLAB (1-888-478-4522) (toll free in USA), or 1(312) 455-8498 (outside USA)

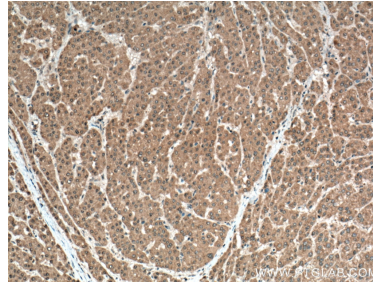
E: [proteintech@ptglab.com](mailto:proteintech@ptglab.com)  
W: [ptglab.com](http://ptglab.com)

This product is exclusively available under Proteintech Group brand and is not available to purchase from any other manufacturer.

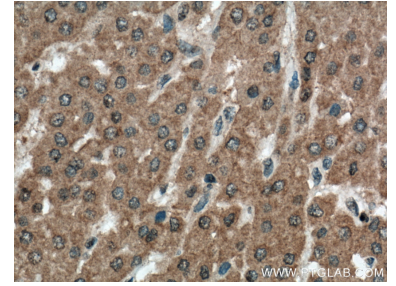
## Selected Validation Data



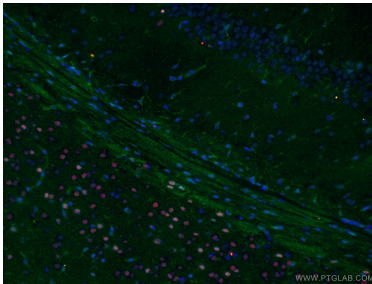
Dual immunofluorescent analysis of (4% PFA) fixed mouse brain tissue using 20689-1-AP (RELN antibody) at dilution of 1:50 and 66564-1-Ig (Tbr1 antibody), further stained with Alexa Fluor 488-Conjugated Goat Anti-Rabbit IgG(H+L) for 20689-1-AP and Alexa Fluor 594-Conjugated Goat Anti-Mouse IgG(H+L) for 66564-1-Ig.



Immunohistochemical analysis of paraffin-embedded human liver cancer tissue slide using 20689-1-AP (RELN antibody) at dilution of 1:200 (under 10x lens. Heat mediated antigen retrieval with Tris-EDTA buffer (pH 9.0).



Immunohistochemical analysis of paraffin-embedded human liver cancer tissue slide using 20689-1-AP (RELN antibody) at dilution of 1:200 (under 40x lens. Heat mediated antigen retrieval with Tris-EDTA buffer (pH 9.0).



Dual immunofluorescent analysis of (4% PFA) fixed mouse brain tissue using 20689-1-AP (RELN antibody) at dilution of 1:50 and 66564-1-Ig (Tbr1 antibody), further stained with Alexa Fluor 488-Conjugated Goat Anti-Rabbit IgG(H+L) for 20689-1-AP and Alexa Fluor 594-Conjugated Goat Anti-Mouse IgG(H+L) for 66564-1-Ig.