

For Research Use Only

TOP1 Polyclonal antibody

Catalog Number: 20705-1-AP **10 Publications**



Basic Information

Catalog Number: 20705-1-AP	GenBank Accession Number: NM_003286	Purification Method: Antigen affinity purification
Size: 150ul , Concentration: 700 µg/ml by Nanodrop and 373 µg/ml by Bradford method using BSA as the standard;	GeneID (NCBI): 7150	Recommended Dilutions: WB 1:500-1:1000 IHC 1:20-1:200 IF 1:50-1:500
Source: Rabbit	Full Name: topoisomerase (DNA) I	
Isotype: IgG	Calculated MW: 91 kDa	
	Observed MW: 90 kDa	

Applications

Tested Applications: IF, IHC, WB, ELISA	Positive Controls: WB : LO2 cells, IHC : human cervical cancer tissue, IF : HepG2 cells,
Cited Applications: IF, WB	
Species Specificity: human	
Cited Species: human, mouse	
Note-IHC: suggested antigen retrieval with TE buffer pH 9.0; (*) Alternatively, antigen retrieval may be performed with citrate buffer pH 6.0	

Background Information

TOP1 belongs to the eukaryotic type I topoisomerase family. The reaction catalyzed by topoisomerases leads to the conversion of one topological isomer of DNA to another. A chromosomal aberration involving TOP1 is found in a form of therapy-related myelodysplastic syndrome. The antibody is specific to TOP1.

Notable Publications

Author	Pubmed ID	Journal	Application
Huijing Yin	31501431	Cell Death Dis	WB
Jiao Li	31758083	Sci Rep	WB
Jingjun Wu	26612655	Chem Biol Interact	WB

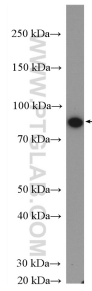
Storage

Storage:
Store at -20°C. Stable for one year after shipment.
Storage Buffer:
PBS with 0.02% sodium azide and 50% glycerol pH 7.3.
Aliquoting is unnecessary for -20°C storage

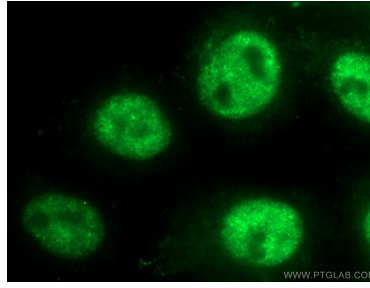
For technical support and original validation data for this product please contact:
T: 1 (888) 4PTGLAB (1-888-478-4522) (toll free in USA), or 1(312) 455-8498 (outside USA)
E: proteintech@ptglab.com
W: ptglab.com

This product is exclusively available under Proteintech Group brand and is not available to purchase from any other manufacturer.

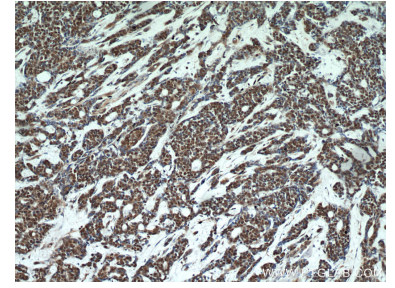
Selected Validation Data



L02 cells were subjected to SDS PAGE followed by western blot with 20705-1-AP (TOP1 antibody) at dilution of 1:600 incubated at room temperature for 1.5 hours.



Immunofluorescent analysis of (4% PFA) fixed HepG2 cells using 20705-1-AP (TOP1 antibody) at dilution of 1:50 and Alexa Fluor 488-conjugated AffiniPure Goat Anti-Rabbit IgG(H+L).



Immunohistochemical analysis of paraffin-embedded human cervical cancer using 20705-1-AP (TOP1 antibody) at dilution of 1:50 (under 10x lens).