

For Research Use Only

# CFTR Polyclonal antibody

Catalog Number: 20738-1-AP

8 Publications



## Basic Information

### Catalog Number:

20738-1-AP

### Size:

150ul, Concentration: 650 ug/ml by Nanodrop;

### Source:

Rabbit

### Isotype:

IgG

### GenBank Accession Number:

NM\_000492

### GeneID (NCBI):

1080

### UNIPROT ID:

P13569

### Full Name:

cystic fibrosis transmembrane conductance regulator (ATP-binding cassette sub-family C, member 7)

### Calculated MW:

168 kDa

### Purification Method:

Antigen affinity purification

### Recommended Dilutions:

IHC: 1:500-1:2000

FC (Intra): 0.20 ug per 10<sup>6</sup> cells in a 100 µl suspension

## Applications

### Tested Applications:

IHC, FC (Intra), ELISA

### Cited Applications:

WB, IHC, IF

### Species Specificity:

human

### Cited Species:

human, mouse

### Positive Controls:

IHC : human lung tissue, human breast cancer tissue

FC (Intra) : HUVEC cells,

**Note-IHC: suggested antigen retrieval with TE buffer pH 9.0; (\*) Alternatively, antigen retrieval may be performed with citrate buffer pH 6.0**

## Background Information

CFTR is a member of the ATP-binding cassette (ABC) family of membrane transport proteins, most members of which function as ATP-dependent pumps. CFTR is unique among human ABC proteins in functioning not as a pump, but as an ion channel.

## Notable Publications

Author	Pubmed ID	Journal	Application
Hui-Fang Zhang	36347997	Acta Pharmacol Sin	WB
Dao-Lai Zhang	29393851	Elife	WB,IF
Mauricio Di Fulvio	33264332	PLoS One	IF

## Storage

### Storage:

Store at -20°C. Stable for one year after shipment.

### Storage Buffer:

PBS with 0.02% sodium azide and 50% glycerol, pH7.3

Aliquoting is unnecessary for -20°C storage

\*\*\* 20ul sizes contain 0.1% BSA

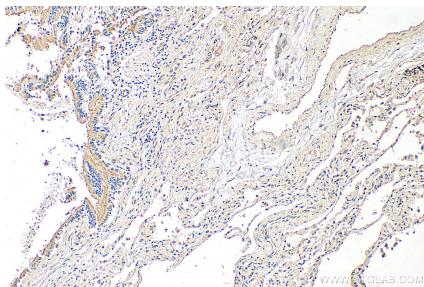
For technical support and original validation data for this product please contact:

T: 1 (888) 4PTGLAB (1-888-478-4522) (toll free in USA), or 1(312) 455-8498 (outside USA)

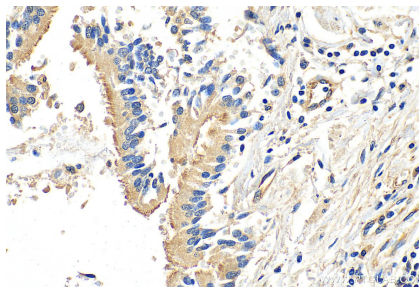
E: [proteintech@ptglab.com](mailto:proteintech@ptglab.com)  
W: [ptglab.com](http://ptglab.com)

This product is exclusively available under Proteintech Group brand and is not available to purchase from any other manufacturer.

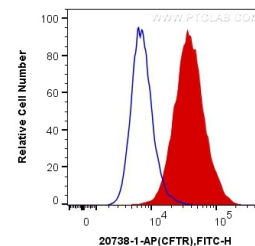
## Selected Validation Data



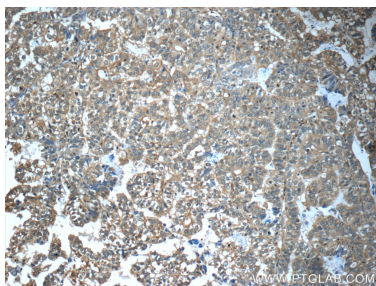
Immunohistochemical analysis of paraffin-embedded human lung tissue slide using 20738-1-AP (CFTR antibody) at dilution of 1:1000 (under 10x lens). Heat mediated antigen retrieval with Tris-EDTA buffer (pH 9.0).



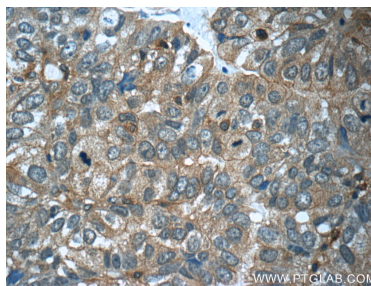
Immunohistochemical analysis of paraffin-embedded human lung tissue slide using 20738-1-AP (CFTR antibody) at dilution of 1:1000 (under 40x lens). Heat mediated antigen retrieval with Tris-EDTA buffer (pH 9.0).



1X10<sup>6</sup> HUVEC cells were intracellularly stained with 0.2 ug Anti-Human CFTR (20738-1-AP) (red), or 0.2 ug Control Antibody. Cells were fixed with 4% PFA and permeabilized with Flow Cytometry Perm Buffer (PF00011-C).



Immunohistochemical analysis of paraffin-embedded human breast cancer tissue slide using 20738-1-AP (CFTR Antibody) at dilution of 1:50 (under 10x lens).



Immunohistochemical analysis of paraffin-embedded human breast cancer tissue slide using 20738-1-AP (CFTR Antibody) at dilution of 1:50 (under 40x lens).