

For Research Use Only

NPT1 Polyclonal antibody

Catalog Number: 20751-1-AP

5 Publications



Basic Information

Catalog Number:

20751-1-AP

Size:

150ul, Concentration: 500 ug/ml by Nanodrop and 300 ug/ml by Bradford method using BSA as the standard;

Source:

Rabbit

Isotype:

IgG

Immunogen Catalog Number:

AG12819

GenBank Accession Number:

BC101745

GeneID (NCBI):

6568

UNIPROT ID:

Q14916

Full Name:

solute carrier family 17 (sodium phosphate), member 1

Calculated MW:

467 aa, 51 kDa

Observed MW:

50 kDa, 60-64 kDa

Purification Method:

Antigen affinity purification

Recommended Dilutions:

WB: 1:2000-1:12000

Applications

Tested Applications:

WB, ELISA

Cited Applications:

WB

Species Specificity:

human, mouse, rat

Cited Species:

human, mouse

Positive Controls:

WB: mouse brain tissue, human placenta tissue, mouse kidney tissue, mouse skeletal muscle tissue

Background Information

NPT1 (also known as SLC17A1) is a member of sodium-dependent inorganic phosphate transporters (NPT), which regulates entrance into the cellular membrane. NPT1 is mainly expressed in the kidney transporting small organic anions such as PAH (para-aminohippurate), but it is also found in the liver and brain. NPT1 localizes to the apical membrane of renal proximal tubular cells. NPT1 exists two isoforms due to the alternative splicing. Western blot analysis using this antibody detected a major band around 45-55 kDa in kidney tissue.

Notable Publications

| Author | Pubmed ID | Journal | Application |
|------------|-----------|-----------------|-------------|
| Ruixia Bao | 34785103 | Phytomedicine | WB |
| Jing Xiao | 29497172 | Exp Mol Med | WB |
| Ruixia Bao | 31920654 | Front Pharmacol | WB |

Storage

Storage:

Store at -20°C. Stable for one year after shipment.

Storage Buffer:

PBS with 0.02% sodium azide and 50% glycerol, pH7.3

Aliquoting is unnecessary for -20°C storage

*** 20ul sizes contain 0.1% BSA

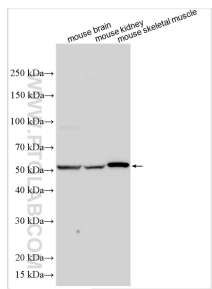
For technical support and original validation data for this product please contact:

T: 1 (888) 4PTGLAB (1-888-478-4522) (toll free in USA), or 1(312) 455-8498 (outside USA)

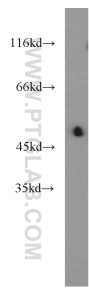
E: proteintech@ptglab.com
W: ptglab.com

This product is exclusively available under Proteintech Group brand and is not available to purchase from any other manufacturer.

Selected Validation Data



Various lysates were subjected to SDS PAGE followed by western blot with 20751-1-AP (NPT1 antibody) at dilution of 1:6000 incubated at room temperature for 1.5 hours.



mouse kidney tissue were subjected to SDS PAGE followed by western blot with 20751-1-AP (NPT1 antibody) at dilution of 1:1000 incubated at room temperature for 1.5 hours.