

For Research Use Only

GSDMD Polyclonal antibody

Catalog Number: 20770-1-AP

Featured Product

361 Publications



Basic Information

Catalog Number:

20770-1-AP

Size:

150ul, Concentration: 800 ug/ml by Nanodrop;

Source:

Rabbit

Isotype:

IgG

Immunogen Catalog Number:

AG14757

GenBank Accession Number:

BC008904

GeneID (NCBI):

79792

UNIPROT ID:

P57764

Full Name:

gasdermin D

Calculated MW:

484 aa, 53 kDa

Observed MW:

50-53 kDa

Purification Method:

Antigen affinity purification

Recommended Dilutions:

WB: 1:2000-1:10000

IP: 0.5-4.0 ug for 1.0-3.0 mg of total protein lysate

IHC: 1:50-1:500

IF/ICC: 1:50-1:500

FC (Intra): 0.40 ug per 10⁶ cells in a 100 µl suspension

Applications

Tested Applications:

WB, IHC, IF/ICC, FC (Intra), IP, ELISA

Cited Applications:

WB, IHC, IF, IP

Species Specificity:

human, mouse, rat

Cited Species:

human, mouse, rat, pig, rabbit, bovine, hamster

Note-IHC: suggested antigen retrieval with TE buffer pH 9.0; (*) Alternatively, antigen retrieval may be performed with citrate buffer pH 6.0

Positive Controls:

WB: A431 cells, NIH/3T3 cells, Jurkat cells, C6 cells, rat liver tissue, rat brain tissue

IP: THP-1 cells,

IHC: human ovary cancer tissue, mouse lung tissue

IF/ICC: HeLa cells,

FC (Intra): Jurkat cells,

Background Information

GSDMD is a member of the gasdermin family. Members of this family appear to play a role in regulation of epithelial proliferation. GSDMD has been suggested to act as a tumor suppressor. Recently, GSDMD is identified as a new component of inflammasomes, and it is an executor of pyroptosis and required for interleukin-1 β secretion. Cleavage of GSDMD by inflammatory caspases determines pyroptotic cell death. This antibody can only detect full length GSDMD.

Notable Publications

Author	Pubmed ID	Journal	Application
Xuye Jiang	34630100	Front Pharmacol	WB
Jun Tao	33010604	Placenta	WB
Youliang Wang	31608008	Front Endocrinol (Lausanne)	IHC

Storage

Storage:

Store at -20°C. Stable for one year after shipment.

Storage Buffer:

PBS with 0.02% sodium azide and 50% glycerol, pH7.3

Aliquoting is unnecessary for -20°C storage

*** 20ul sizes contain 0.1% BSA

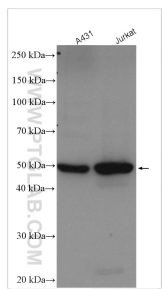
For technical support and original validation data for this product please contact:

T: 1 (888) 4PTGLAB (1-888-478-4522) (toll free in USA), or 1(312) 455-8498 (outside USA)

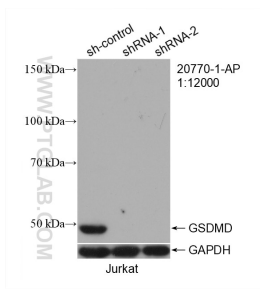
E: proteintech@ptglab.com
W: ptglab.com

This product is exclusively available under Proteintech Group brand and is not available to purchase from any other manufacturer.

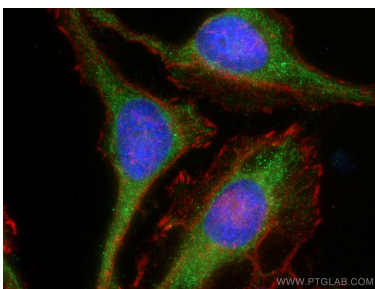
Selected Validation Data



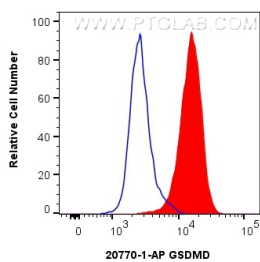
Various lysates were subjected to SDS PAGE followed by western blot with 20770-1-AP (GSDMD antibody) at dilution of 1:5000 incubated at room temperature for 1.5 hours.



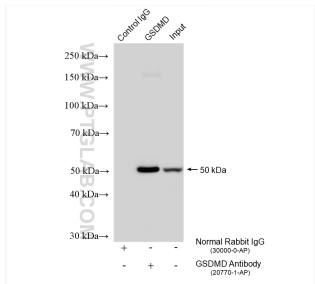
WB result of GSDMD antibody (20770-1-AP; 1:12000; incubated at room temperature for 1.5 hours) with sh-Control and sh-GSDMD transfected Jurkat cells.



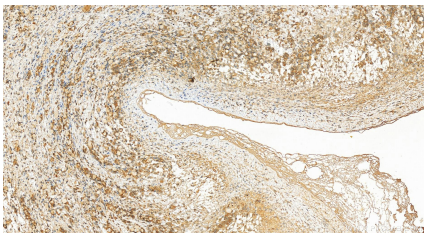
Immunofluorescent analysis of (-20°C Ethanol) fixed HeLa cells using GSDMD antibody (20770-1-AP) at dilution of 1:200 and CoraLite®488-Conjugated AffiniPure Goat Anti-Rabbit IgG(H+L), CL594-Phalloidin (red).



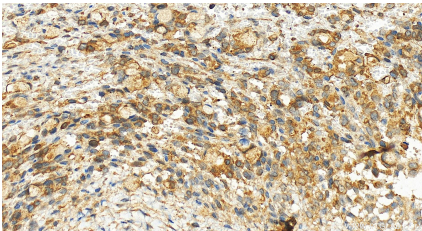
1x10⁶ Jurkat cells were intracellularly stained with 0.4 ug GSDMD Polyclonal antibody (20770-1-AP) and CoraLite®488-Conjugated Goat Anti-Rabbit IgG(H+L) (SA00013-2)(red), or 0.4 ug Rabbit IgG control Rabbit PolyAb (30000-0-AP) (blue). Cells were fixed with 4% PFA and permeabilized with Flow Cytometry Perm Buffer (PF00011-C).



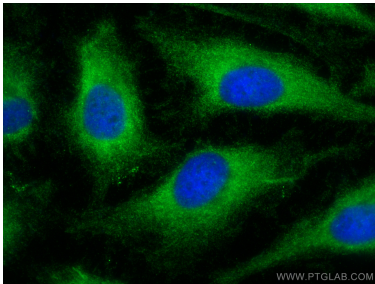
IP result of anti-GSDMD (IP:20770-1-AP, 4ug; Detection:20770-1-AP 1:4000) with THP-1 cells lysate 1560 ug.



Immunohistochemical analysis of paraffin-embedded human ovary cancer tissue slide using 20770-1-AP (GSDMD antibody) at dilution of 1:200 (under 20x lens). Heat mediated antigen retrieval with Tris-EDTA buffer (pH 9.0).



Immunohistochemical analysis of paraffin-embedded human ovary cancer tissue slide using 20770-1-AP (GSDMD antibody) at dilution of 1:200 (under 20x lens). Heat mediated antigen retrieval with Tris-EDTA buffer (pH 9.0).



Immunofluorescent analysis of (-20°C Ethanol) fixed HeLa cells using GSDMD antibody (20770-1-AP) at dilution of 1:400 and CoraLite®488-Conjugated AffiniPure Goat Anti-Rabbit IgG(H+L) (SA00013-2).