

For Research Use Only

LIMS1 Polyclonal antibody

Catalog Number: 20772-1-AP

Featured Product

6 Publications



Basic Information

Catalog Number:

20772-1-AP

Size:

150ul, Concentration: 260 ug/ml by Nanodrop and 207 ug/ml by Bradford method using BSA as the standard;

Source:

Rabbit

Isotype:

IgG

Immunogen Catalog Number:

AG14764

GenBank Accession Number:

BC005341

GeneID (NCBI):

3987

UNIPROT ID:

P48059

Full Name:

LIM and senescent cell antigen-like domains 1

Calculated MW:

325 aa, 37 kDa

Observed MW:

35-37 kDa

Purification Method:

Antigen affinity purification

Recommended Dilutions:

WB 1:500-1:1000

IP 0.5-4.0 ug for 1.0-3.0 mg of total protein lysate

IHC 1:20-1:200

IF/ICC 1:10-1:100

Applications

Tested Applications:

WB, IHC, IF/ICC, IP, ELISA

Cited Applications:

WB, IP

Species Specificity:

human, mouse, rat

Cited Species:

human

Note-IHC: suggested antigen retrieval with TE buffer pH 9.0; (*) Alternatively, antigen retrieval may be performed with citrate buffer pH 6.0

Positive Controls:

WB: Caco-2 cells, mouse lung tissue, human kidney tissue, HeLa cells

IP: K-562 cells,

IHC: human oesophagus cancer tissue,

IF/ICC: HeLa cells,

Background Information

LIMS1, also known as PINCH1, is an adaptor protein that contains five LIM domains, or double zinc fingers (PMID: 7517666). PINCH-1 is a widely expressed focal adhesion protein that forms a ternary complex with integrin-linked kinase (ILK) and CH-ILKBP/actopaxin/alpha-parvin (PMID: 14551191). LIMS1 is involved in integrin signaling through its LIM domain-mediated interaction with integrin-linked kinase, found in focal adhesion plaques.

Notable Publications

Author	Pubmed ID	Journal	Application
Ling Guo	31578224	J Cell Biol	WB,IP
Ling Guo	33004813	Nat Commun	WB
Clotilde Huet-Calderwood	25086068	J Cell Sci	WB

Storage

Storage:

Store at -20°C. Stable for one year after shipment.

Storage Buffer:

PBS with 0.02% sodium azide and 50% glycerol pH 7.3.

Aliquoting is unnecessary for -20°C storage

*** 20ul sizes contain 0.1% BSA

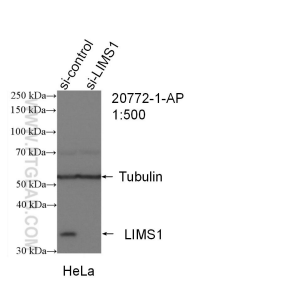
For technical support and original validation data for this product please contact:

T: 1 (888) 4PTGLAB (1-888-478-4522) (toll free in USA), or 1(312) 455-8498 (outside USA)

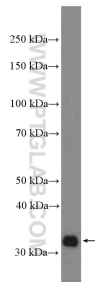
E: proteintech@ptglab.com
W: ptglab.com

This product is exclusively available under Proteintech Group brand and is not available to purchase from any other manufacturer.

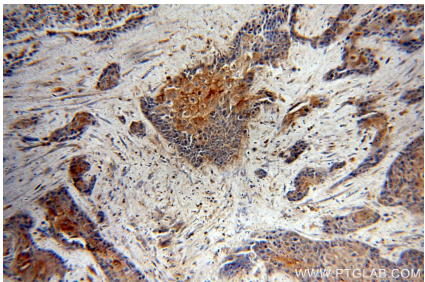
Selected Validation Data



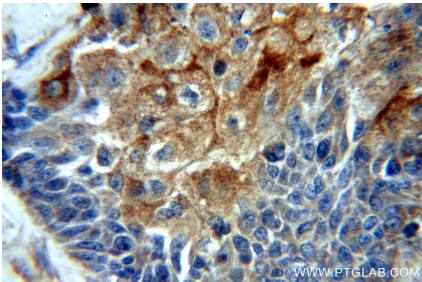
WB result of LIMS1 antibody (20772-1-AP; 1:500; incubated at room temperature for 1.5 hours) with sh-Control and sh-LIMS1 transfected HeLa cells.



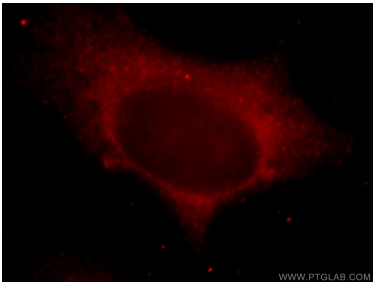
Caco-2 cells were subjected to SDS PAGE followed by western blot with 20772-1-AP (LIMS1 antibody) at dilution of 1:600 incubated at room temperature for 1.5 hours.



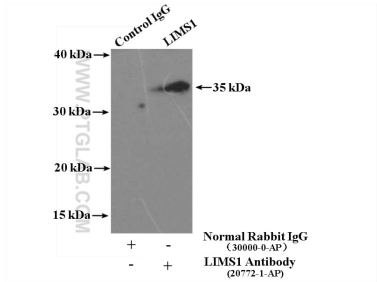
Immunohistochemical analysis of paraffin-embedded human oesophagus cancer using 20772-1-AP (LIMS1 antibody) at dilution of 1:50 (under 10x lens).



Immunohistochemical analysis of paraffin-embedded human oesophagus cancer using 20772-1-AP (LIMS1 antibody) at dilution of 1:50 (under 40x lens).



Immunofluorescent analysis of HeLa cells, using LIMS1 antibody 20772-1-AP at 1:25 dilution and Rhodamine-labeled goat anti-rabbit IgG (red).



IP result of anti-LIMS1 (IP:20772-1-AP, 4ug; Detection:20772-1-AP 1:500) with K-562 cells lysate 3600ug.