

For Research Use Only

# WDR24 Polyclonal antibody

Catalog Number: 20778-1-AP

Featured Product

5 Publications



## Basic Information

### Catalog Number:

20778-1-AP

### Size:

150ul, Concentration: 750 µg/ml by Nanodrop and 247 µg/ml by Bradford method using BSA as the standard;

### Source:

Rabbit

### Isotype:

IgG

### Immunogen Catalog Number:

AG14774

### GenBank Accession Number:

BC008025

### GeneID (NCBI):

84219

### Full Name:

WD repeat domain 24

### Calculated MW:

920 aa, 102 kDa

### Observed MW:

102 kDa, 88 kDa

### Purification Method:

Antigen affinity purification

### Recommended Dilutions:

WB 1:500-1:2000

IP 0.5-4.0 ug for IP and 1:500-1:1000 for WB

IHC 1:50-1:500

IF 1:10-1:100

## Applications

### Tested Applications:

IF, IHC, IP, WB, ELISA

### Cited Applications:

IF, IP, WB

### Species Specificity:

human, mouse

### Cited Species:

human, rat

**Note-IHC: suggested antigen retrieval with TE buffer pH 9.0; (\*) Alternatively, antigen retrieval may be performed with citrate buffer pH 6.0**

### Positive Controls:

WB: HEK-293 cells, mouse brain tissue, HeLa cells

IP: HeLa cells,

IHC: human colon cancer tissue, human colon tissue, human ovary tissue

IF: HeLa cells, HepG2 cells

## Background Information

WDR24 is a component of the GATOR2 complex which has five known subunits (WDR24, WDR59, Mios, Sec13, and Seh1L). GATOR2 complex positively regulates mTORC1 signaling by acting upstream of or in parallel to GATOR1, which is a GTPase-activating protein (GAP) for RagA or RagB and an inhibitor of the amino-acid-sensing pathway. (PMID: 23723238; 25263562)

## Notable Publications

Author	Pubmed ID	Journal	Application
Dandan Xu	30835510	Am J Physiol Endocrinol Metab	WB
Jie Chen	34290409	Nature	WB, IP
Fabian M B Thöne	30797903	Methods	WB, IF

## Storage

### Storage:

Store at -20°C. Stable for one year after shipment.

### Storage Buffer:

PBS with 0.02% sodium azide and 50% glycerol pH 7.3.

Aliquoting is unnecessary for -20°C storage

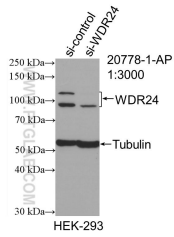
For technical support and original validation data for this product please contact:

T: 1 (888) 4PTGLAB (1-888-478-4522) (toll free in USA), or 1(312) 455-8498 (outside USA)

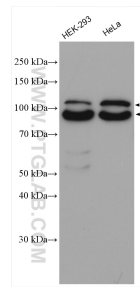
E: proteintech@ptglab.com  
W: ptglab.com

**This product is exclusively available under Proteintech Group brand and is not available to purchase from any other manufacturer.**

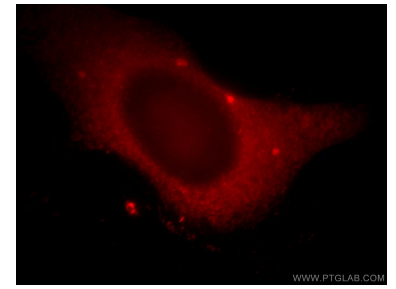
## Selected Validation Data



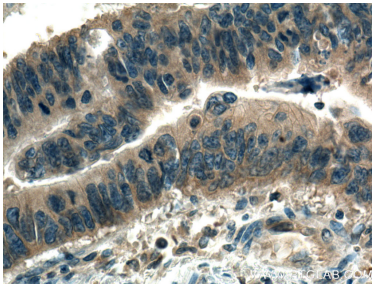
WB result of WDR24 antibody (20778-1-AP; 1:3000; incubated at room temperature for 1.5 hours) with sh-Control and sh-WDR24 transfected HEK-293 cells.



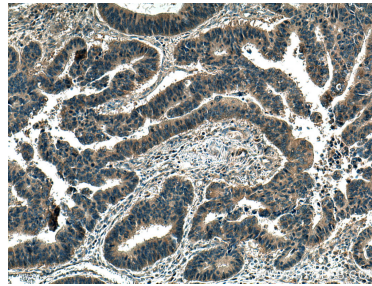
Various lysates were subjected to SDS PAGE followed by western blot with 20778-1-AP (WDR24 antibody) at dilution of 1:1000 incubated at room temperature for 1.5 hours.



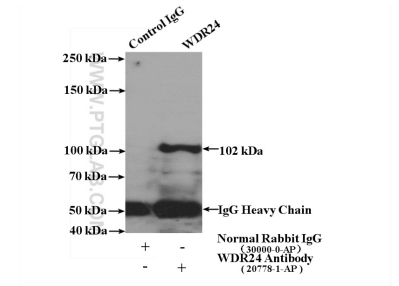
Immunofluorescent analysis of HeLa cells, using WDR24 antibody 20778-1-AP at 1:25 dilution and Rhodamine-labeled goat anti-rabbit IgG (red).



Immunohistochemical analysis of paraffin-embedded human colon cancer tissue slide using 20778-1-AP (WDR24 antibody) at dilution of 1:200 (under 40x lens). Heat mediated antigen retrieval with Tris-EDTA buffer (pH 9.0).



Immunohistochemical analysis of paraffin-embedded human colon cancer tissue slide using 20778-1-AP (WDR24 antibody) at dilution of 1:200 (under 10x lens). Heat mediated antigen retrieval with Tris-EDTA buffer (pH 9.0).



IP Result of anti-WDR24 (IP:20778-1-AP, 4ug; Detection:20778-1-AP 1:500) with HeLa cells lysate 3200ug.